

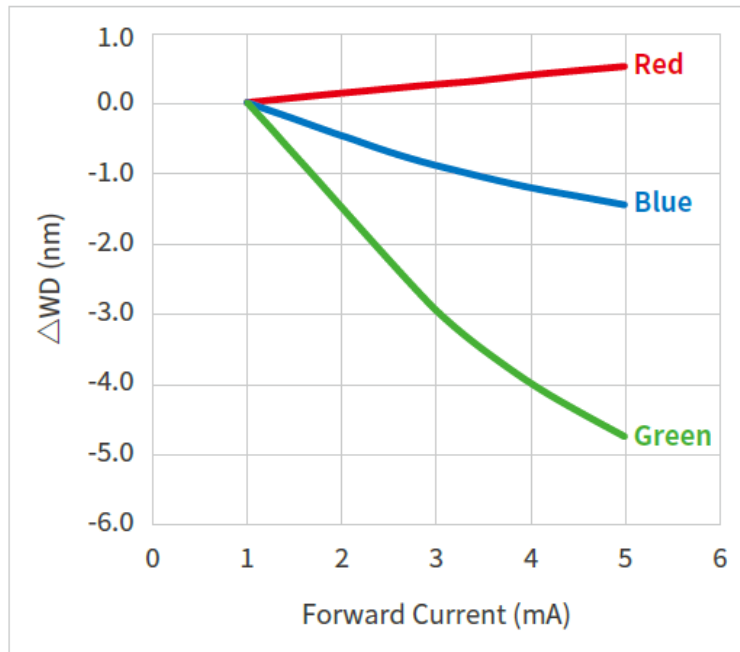


**Macroblock LED Driver ICs Enable the Next Generation of  
Intelligent Signal Displays And Ambient Lighting**

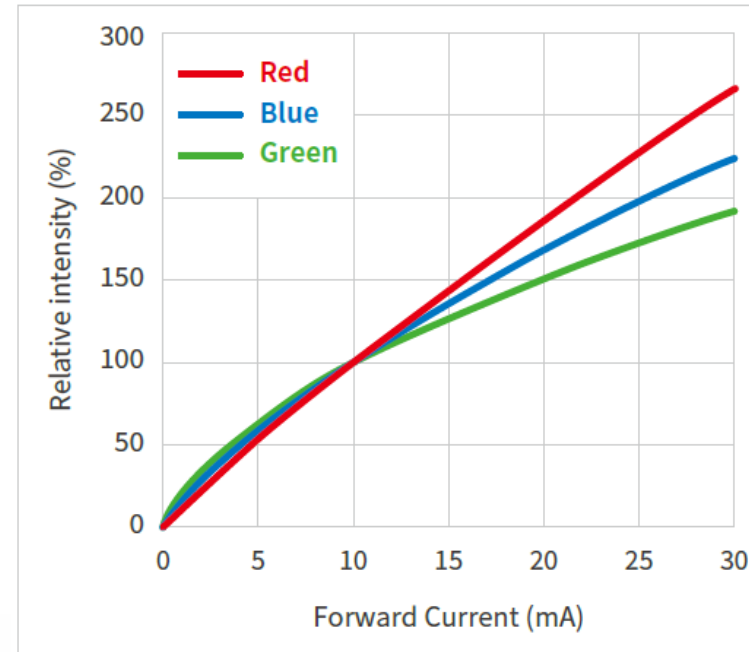
---

Gary Chang

# RGB LED is not perfect



RGB LED Forward Current vs. Wavelength Shift Value



RGB LED Forward Current vs. Luminous Intensity

# Color Shift is an issue for RGB LED application

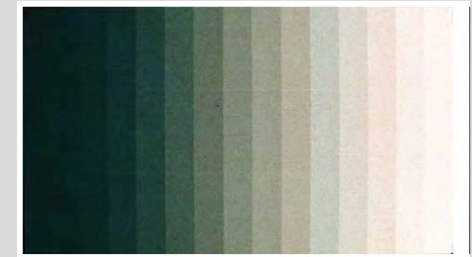
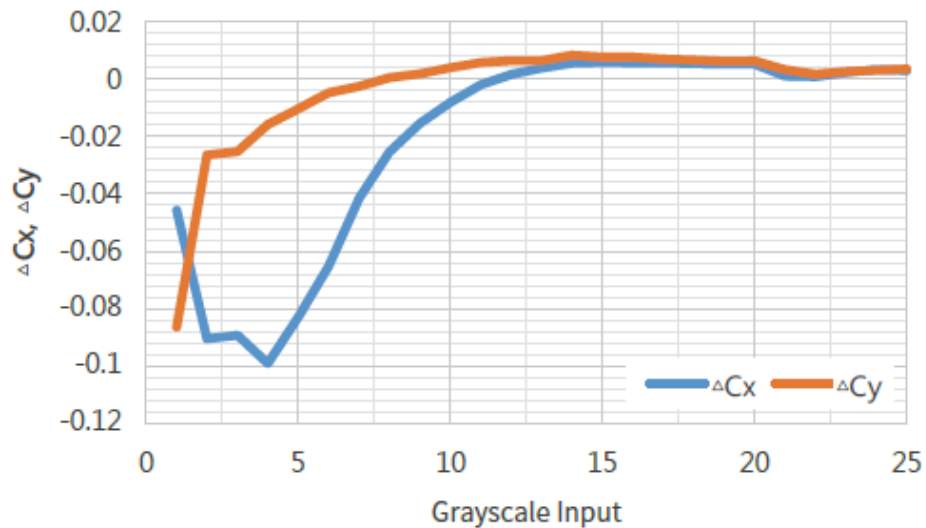
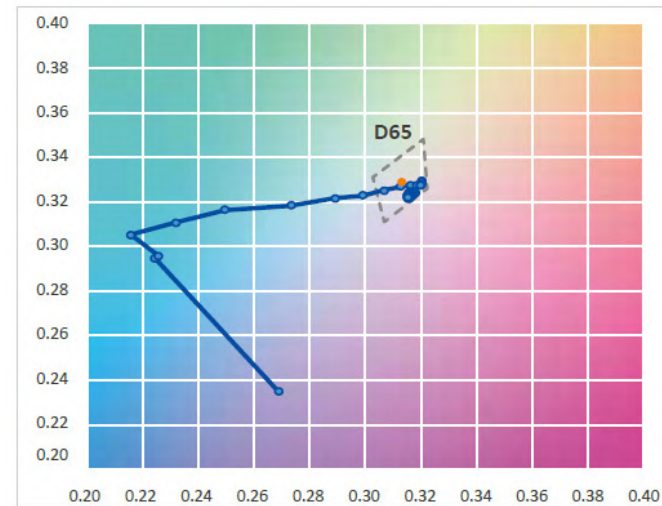


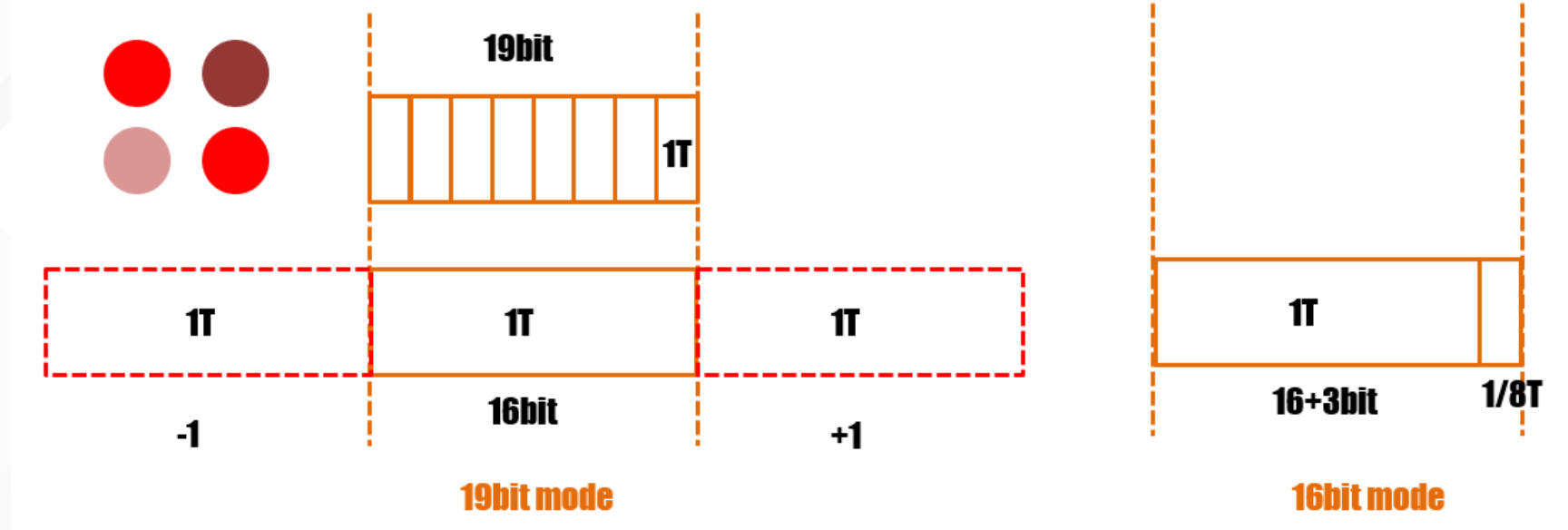
Image Grayscale Input vs.  $\Delta Cx$ ,  $\Delta Cy$  Measured Data (Before Compensation)



(Before Compensation)

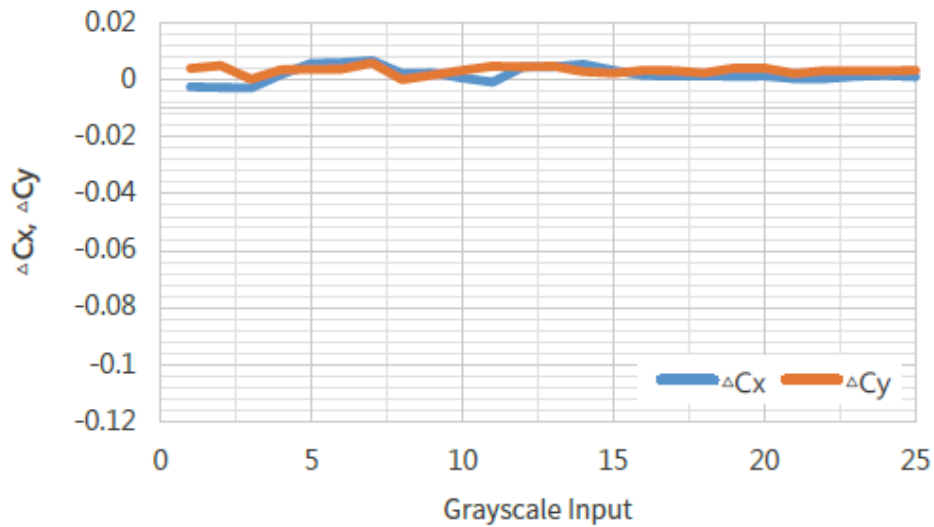


# What can LED Driver do?

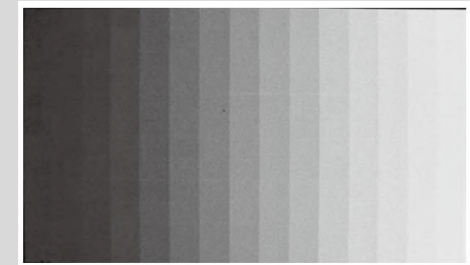
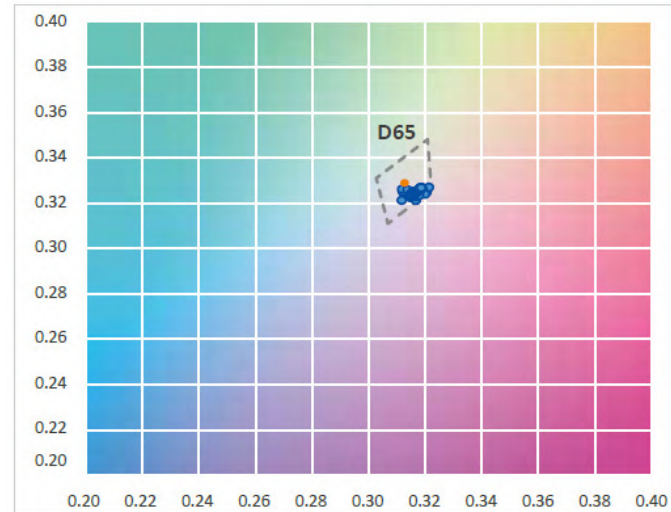


# Color Shift is an issue for RGB LED application

Image Grayscale Input vs.  $\Delta Cx$ ,  $\Delta Cy$  Measured Data (After Compensation)



(After Compensation)





**Macroblock**

INNOVATE FOR LIGHT

**Thank You!**