



THE ART OF LIGHTS



DVN Munich | 05.02.2026



5 production sites



8 sales subsidiaries



40 distribution partners



1500 employees



244 mio.€ revenue


Production Sites



Austria HQ Peuerbach

Since 1977

 400 Employees

 Headquarter
in Peuerbach

IATF 16949*

ISO 14001

ISO 9001

* Remote Function



Austria Waizenkirchen

Since 2025

 35 Employees

ISO 14001

ISO 9001



Portugal

Since 2008

 700 Employees

IATF 16949

ISO 9001

ISO 14001

ISO 45001



Poland

Since 2016

 120 Employees

IATF 16949

ISO 9001

ISO 14001

ISO 45001



Brazil

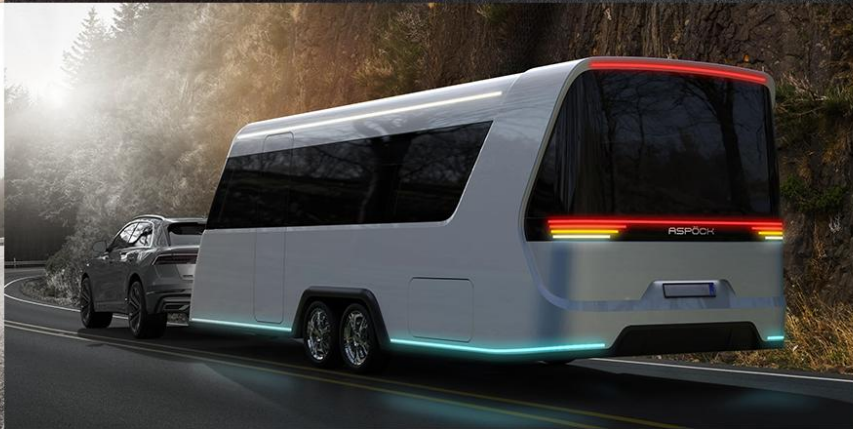
Since 2001

 75 Employees

ISO 9001



THE ART OF
LIGHTS





Truck Trailer

Front Position & EOM



Side Marker Lamps with Reflector



A blue ASPÖCK Flexled side marker lamp is shown mounted on a truck trailer. The lamp is a long, rectangular unit with a textured surface. The ASPÖCK logo is visible on the side of the lamp. The background is a sunset over a body of water, with the sun low on the horizon and mountains in the distance. The sky is a mix of orange, yellow, and blue.

▶ ASPÖCK FLEXLED
SIDE MARKER LAMP



Truck Trailer

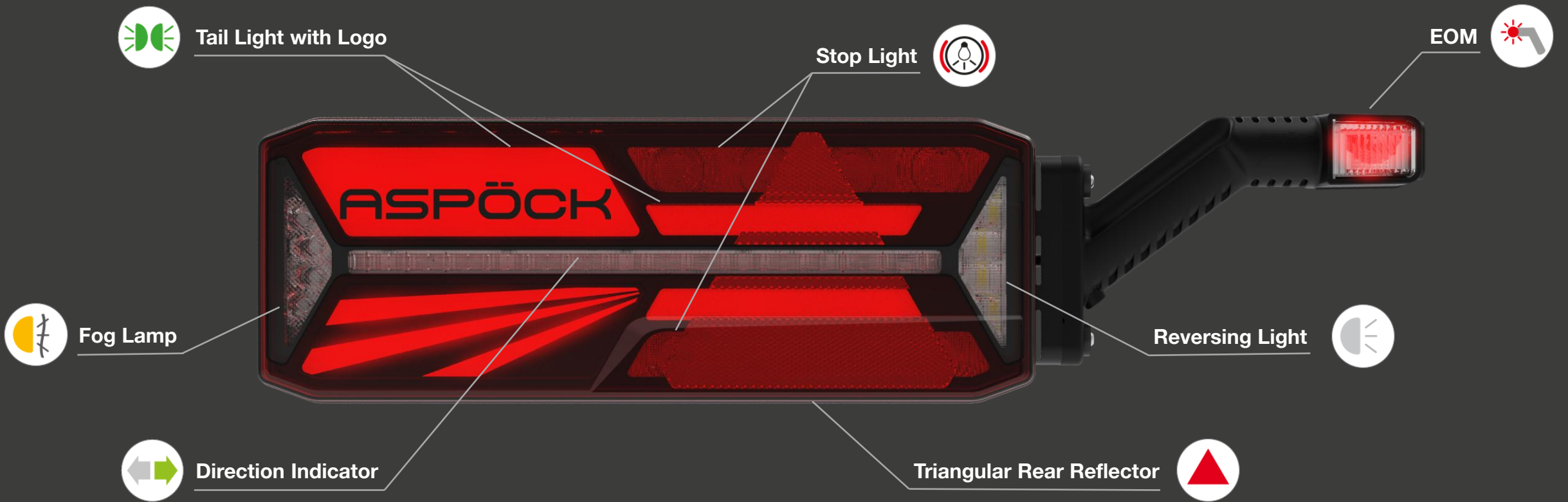
Front Position & EOM



Side Marker Lamps with Reflector

Rear Lamps with EOM







Truck Trailer

Front Position & EOM



LED Multifunction

Side Marker Lamps with Reflector

Rear Lamps with EOM



Licence Plate Lamp

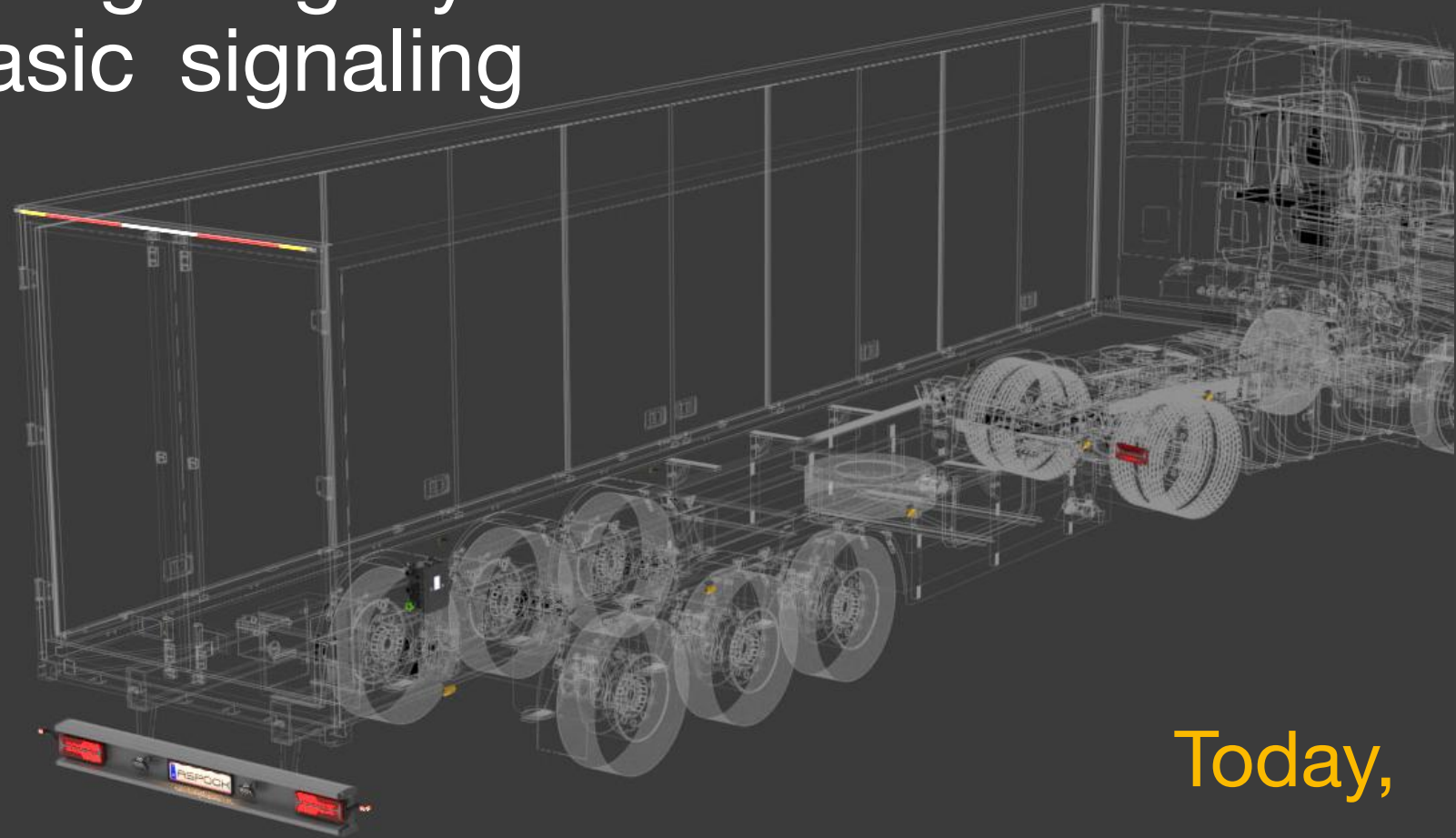
Worklamp / Reversing Lamp





ASPÖCK FLEXLED
TOP-MULTIFUNCTION LAMP

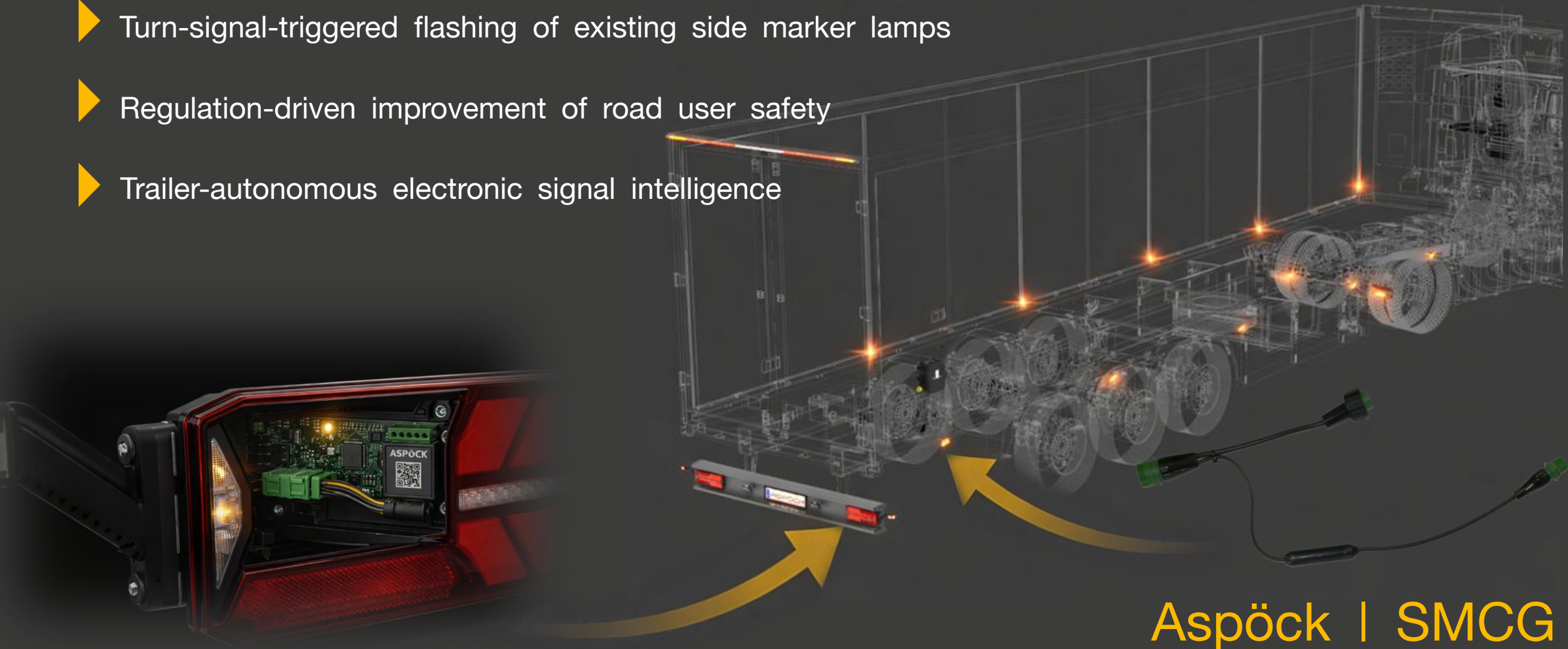
For decades, trailer lighting systems were defined by basic signaling functions



Today,
it is becoming a digital, intelligent system,
enabling advanced trailer assist functions.

Lighting-enabled trailer assist function

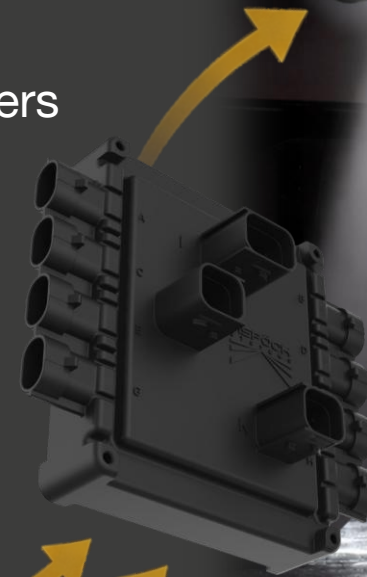
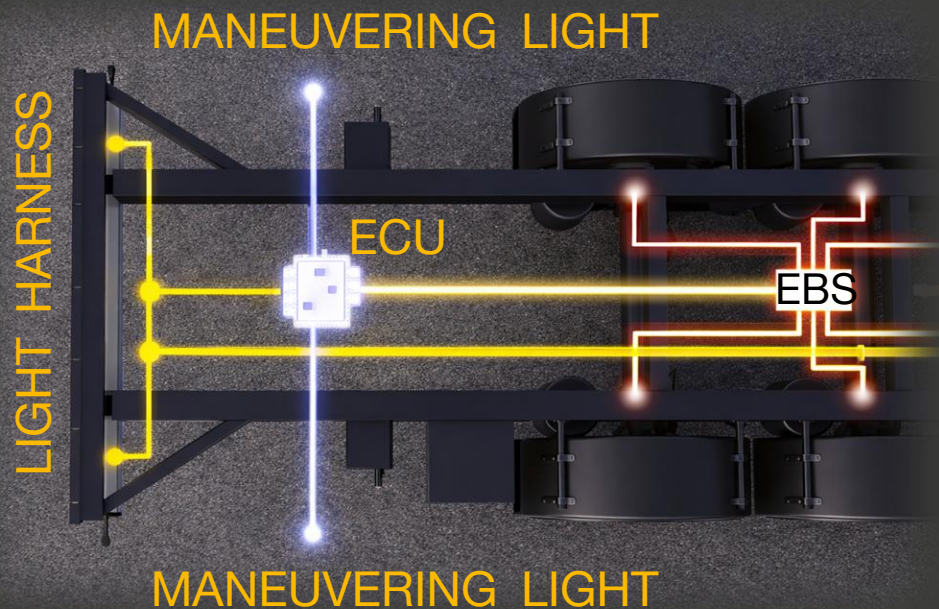
- ▶ Turn-signal-triggered flashing of existing side marker lamps
- ▶ Regulation-driven improvement of road user safety
- ▶ Trailer-autonomous electronic signal intelligence



Aspöck | SMCG

Digital intelligence in trailer lighting

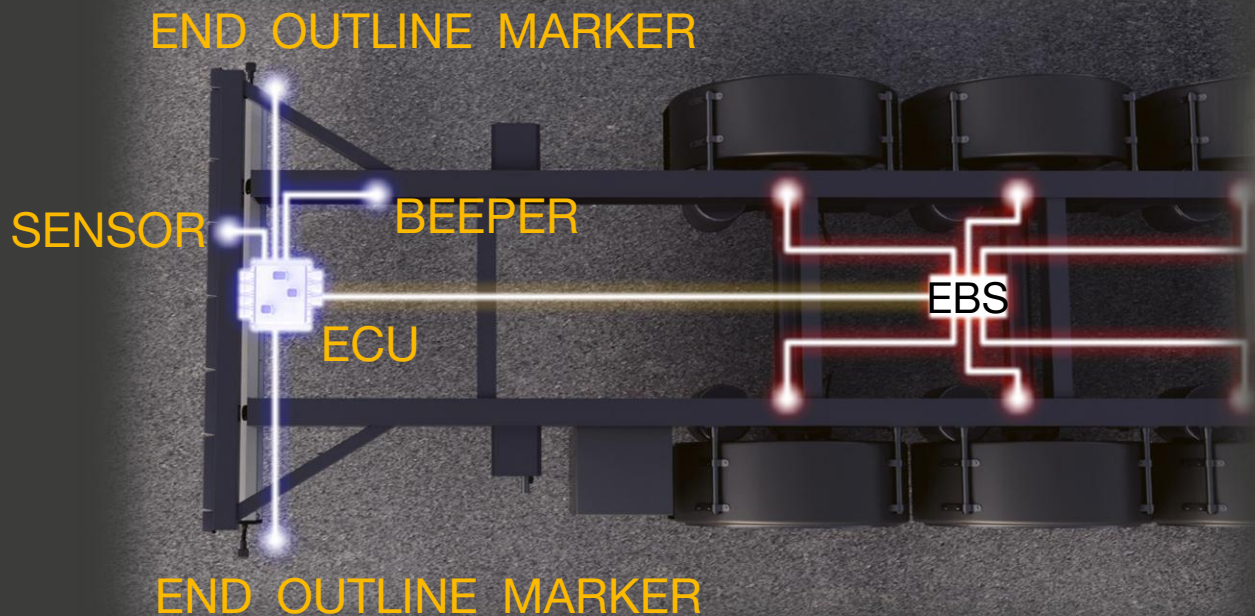
- ▶ Automatic activation of side maneuvering light
- ▶ Regulation-compliant during low-speed maneuvers
- ▶ ECU controlled using trailer operating states



Aspöck | ECU

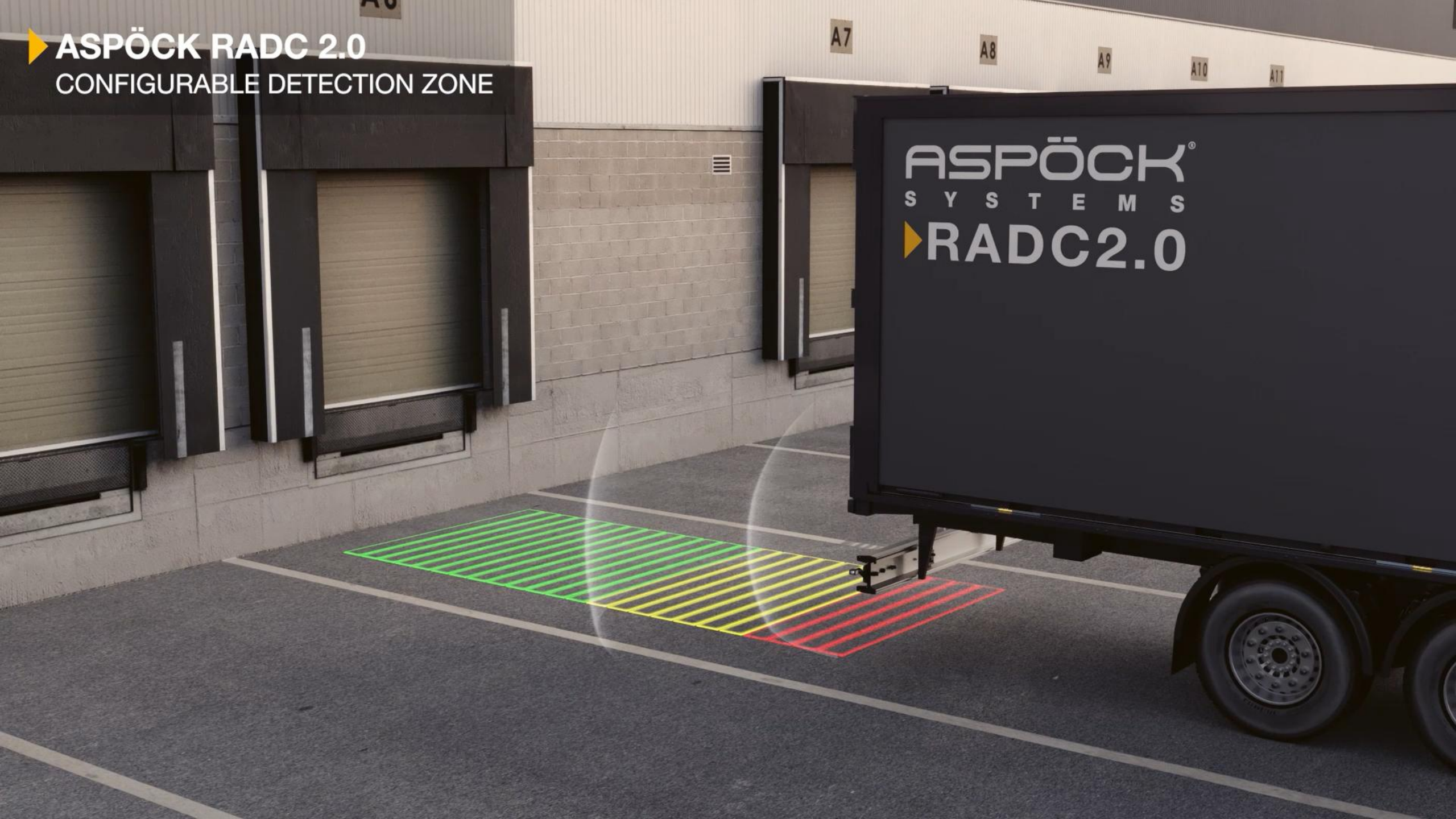
Autonomous trailer assist system with light

- ▶ Reversing assist system for ramp docking maneuvers
- ▶ Supports the driver and reduces low-speed accidents
- ▶ Radar sensing with ECU-coordinated braking and lighting



Aspöck | RADC

▶ **ASPÖCK RADC 2.0**
CONFIGURABLE DETECTION ZONE



Conclusion & Outlook

- ▶ Trailer lighting has become a platform for trailer-local assist functions
- ▶ Safety- and regulation-driven systems already operate autonomously on the trailer
- ▶ Ongoing regulation will define standardized data interfaces for future trailer integration

Next,
The trailer is becoming an active,
intelligent partner in the truck–trailer ecosystem



Thanks!



aspoeck.com