

Design Ambition Meets Industrial Reality

Industrializing Large-Scale High-Tech Components

INEVO
INSPIRING EVOLUTION

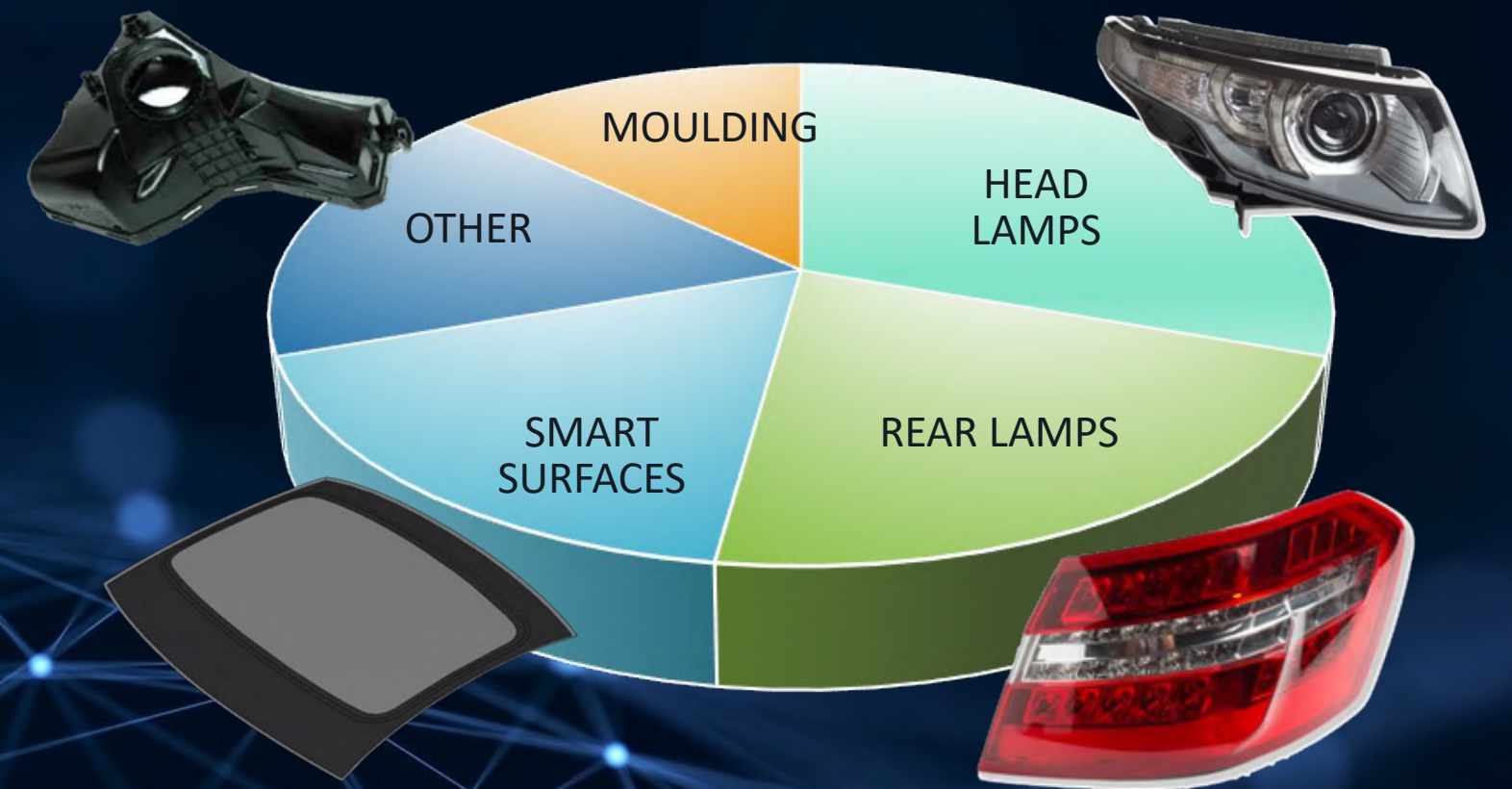


Facts about INEVO

INEVO GROUP

FACTS AND FIGURES

- 15 SE activities/year
- >100 injection tools/year
- 5.000.000 moulded parts/year
- European tooling & process integrator



4

PRODUCTION
PLANTS

130

EMPLOYEES

24

MLN €
TURNOVER

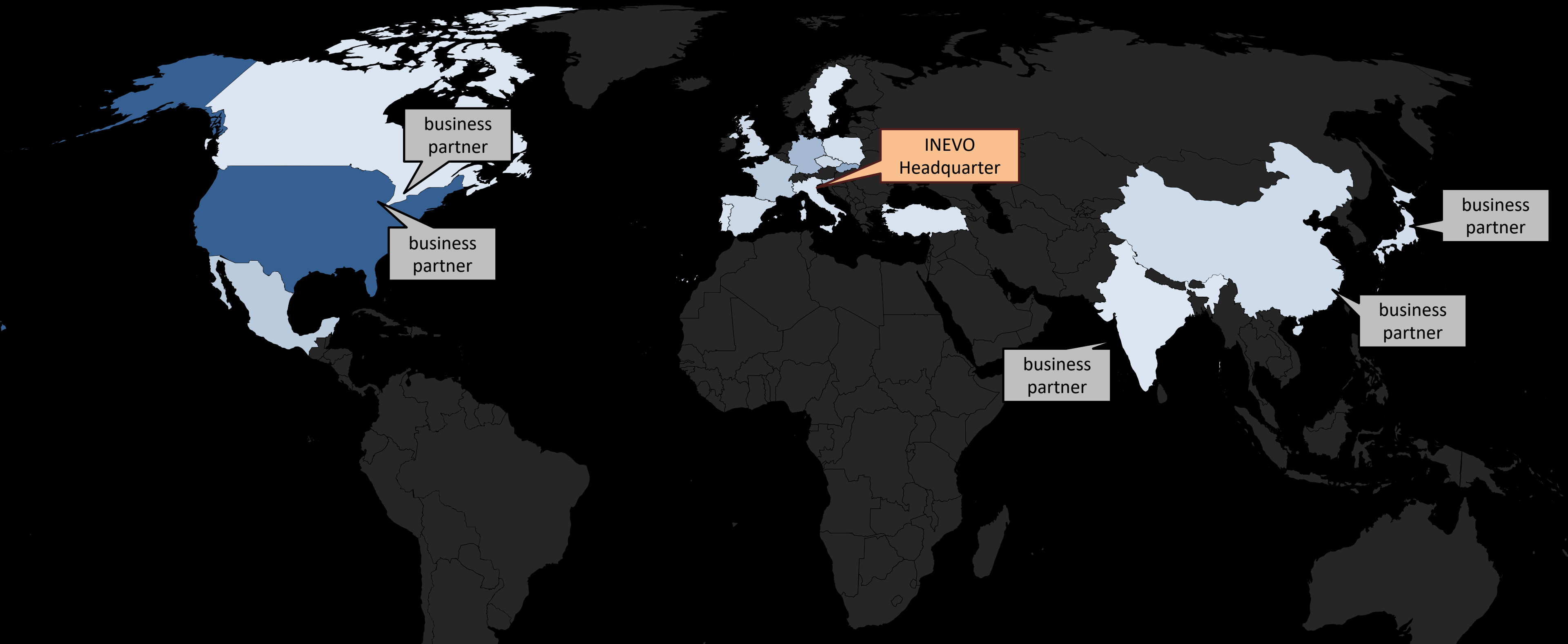
80%

Export
Share

5

Global
Partner

Customers and global presence



business partner

INEVO
Headquarter

business partner

business partner

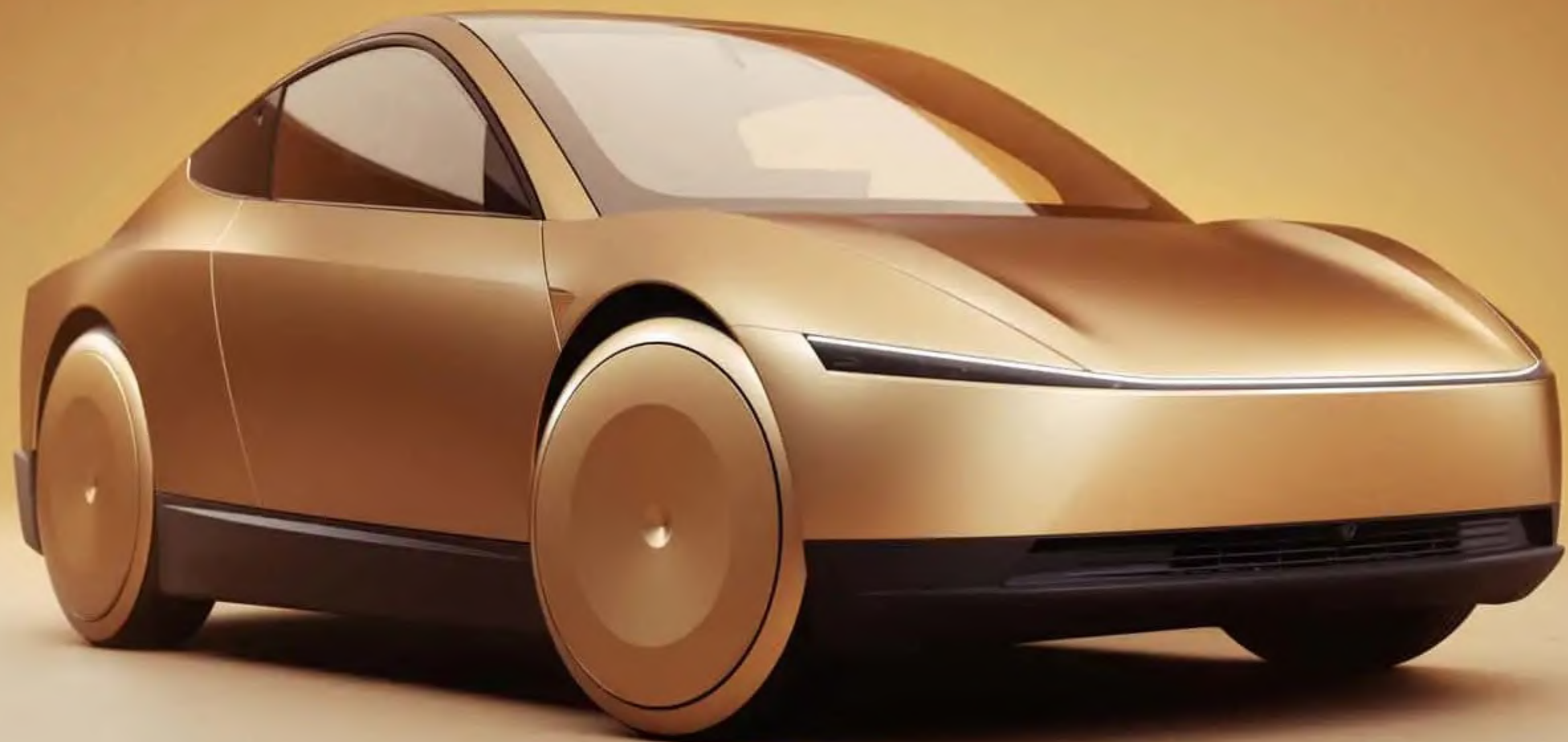
business partner

business partner



Trends



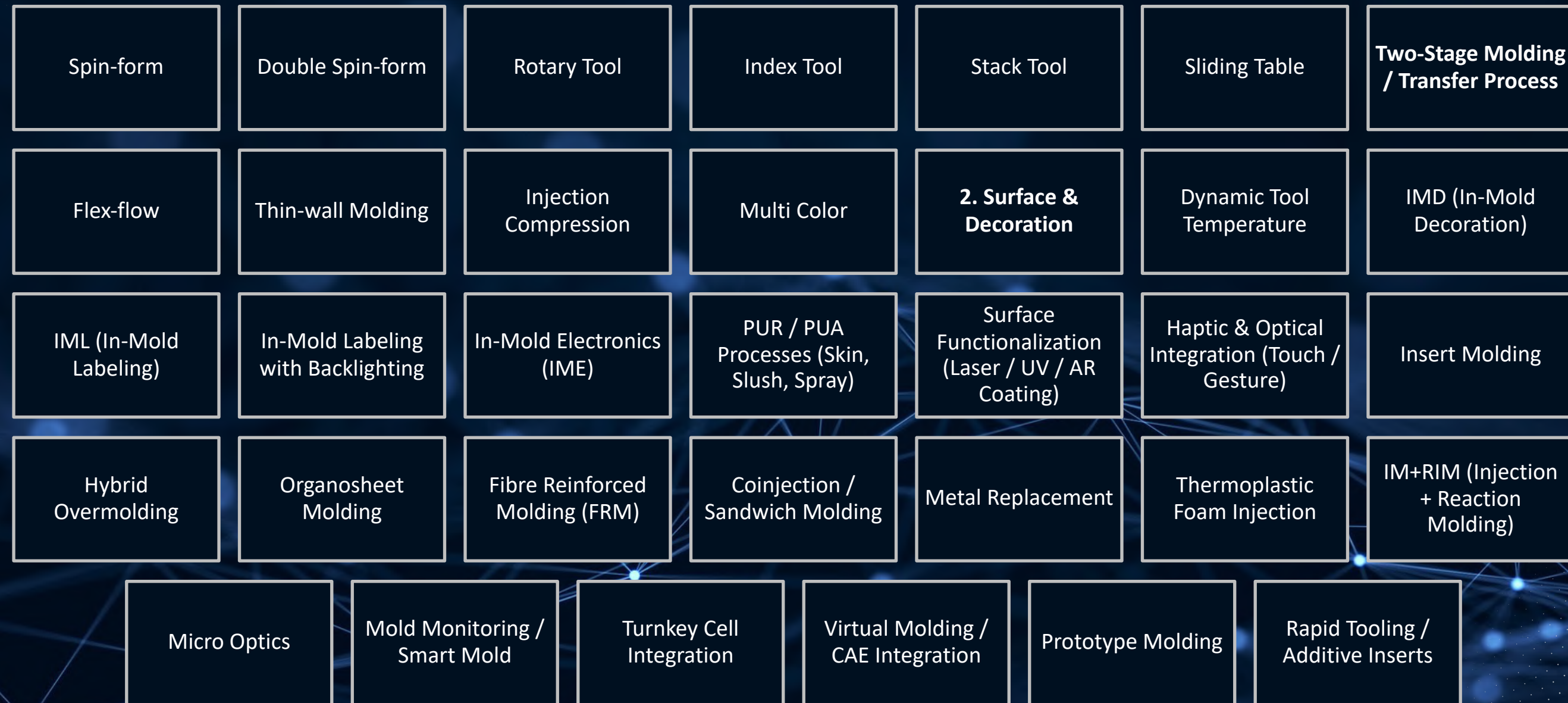




Toolbox

advanced solutions

INEVO Toolbox





Case Studies

Innovative Surface Technologies



Headlense with PUR

2K + Hardcoat

- Proven and stable industrial approach
- Separate coating process
- Lower tooling complexity

3K + PUR + Film

- Integrated protection, optics and functionality
- Reduced external process steps
- Enabler for large-scale headlamp concepts





Flexibility in Fascias with Films

Conventional Painted Bumper

- High energy and CO₂ footprint
- Color change requires line cleaning
- Limited flexibility for variants
- Color defined by paint shop

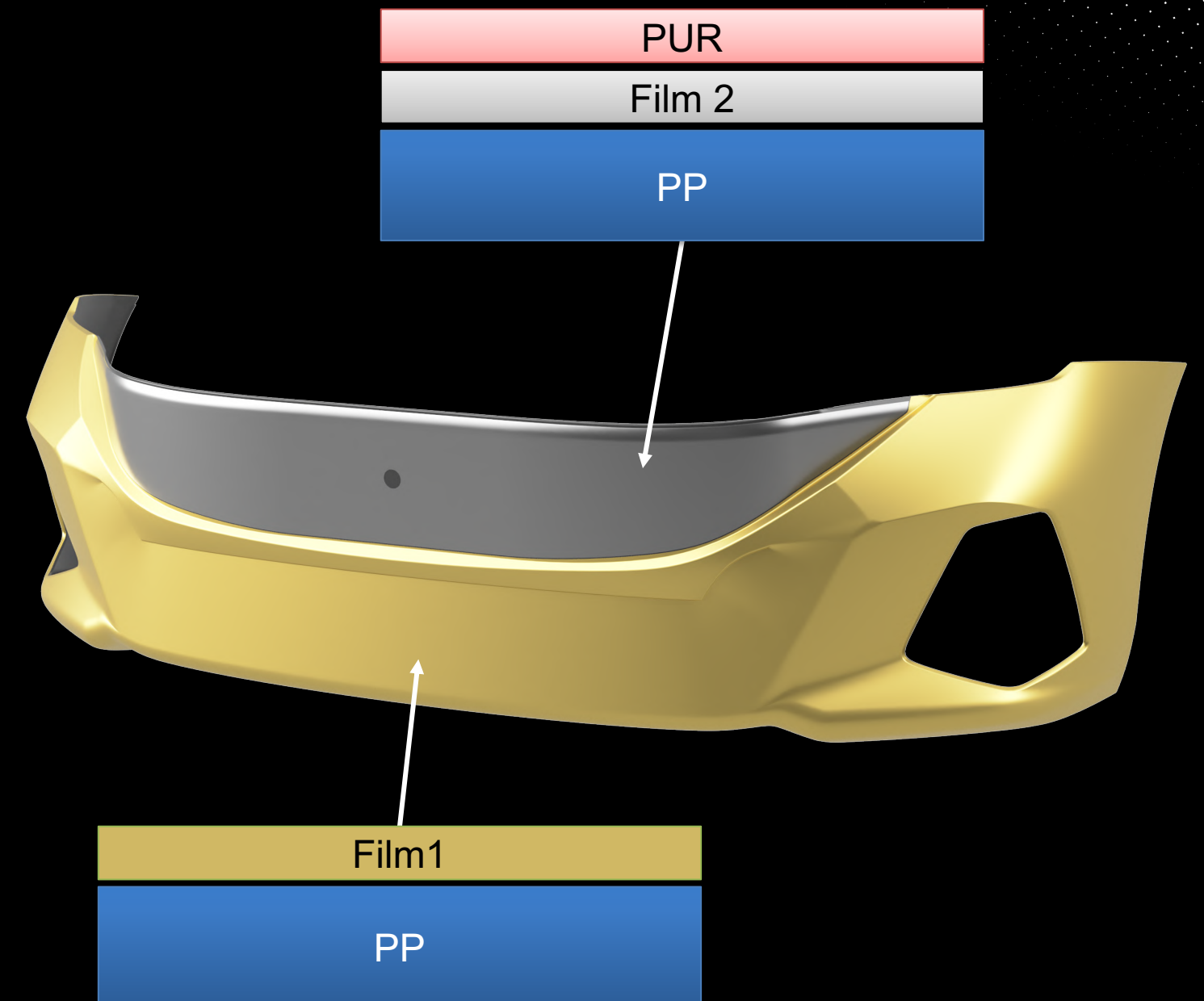
Film Bumper

- Color and surface defined by film
- No paint shop required
- Shot-to-shot color change possible
- Ideal for variants and special editions

Fascia "All in one"

From Design Vision to Industrial Reality

- Frontend parts are becoming larger, more visible and functionally integrated
- Film defines color and surface – no paint shop required
- Short cycle times even for large-scale exterior components
- Industrialization is the real challenge





TEC Show

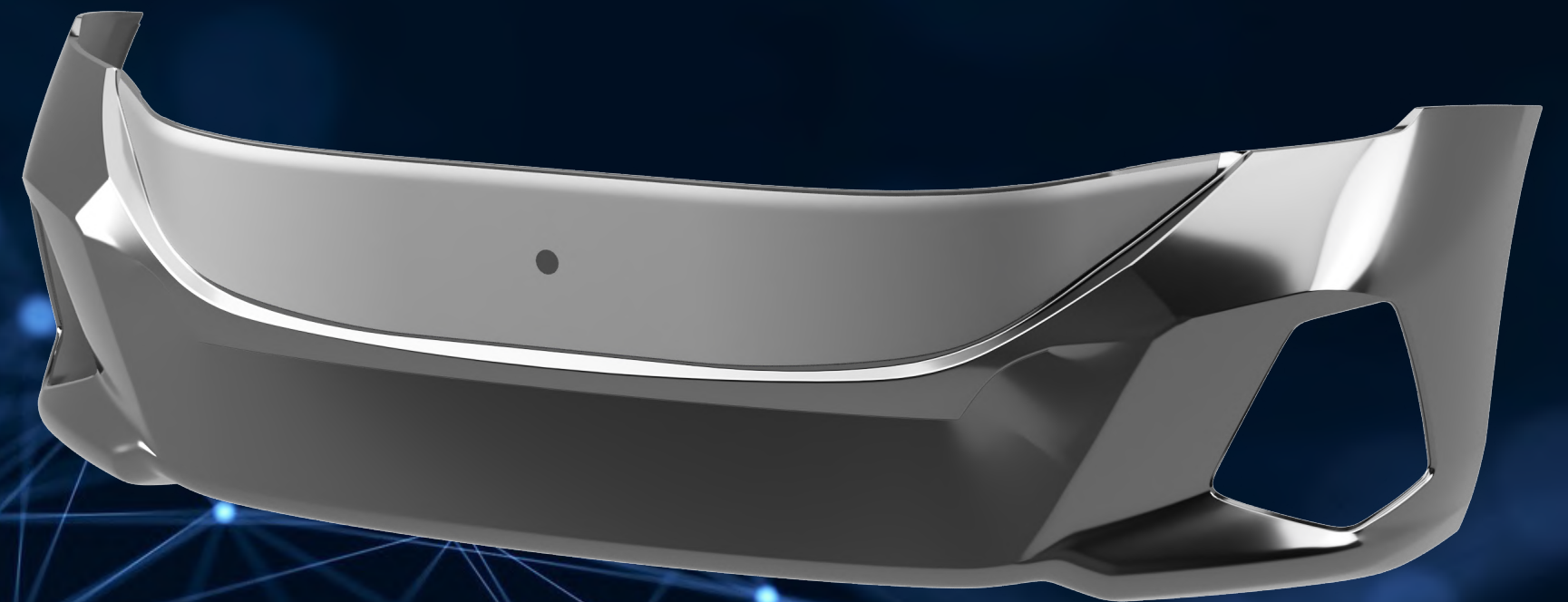


New Innovation

complete Frontend in less than 90 sec

Live at INEVO Headquarter
San Polo di Piave (IT)

Summer 2026





INEVO

INSPIRING EVOLUTION