




beyond

part of  **CSI** a company of **IMQ**
group

beyond



Powering Mobility Evolution



WHO WE ARE

BeonD is an innovative **SME** specialized in **advanced engineering** for electric and sustainable mobility. **It integrates** design, simulation, testing, and prototyping within its own in-house laboratory for batteries, components, and materials.

The company designs and manufactures high-performance battery packs, custom control systems, and **BMS solutions**, supporting industrial clients as a **full-service provider** in the development of complex systems.

Some of our technologies are onboard on the best hi performance products.

Today, **BeonD** is part of an international organization, **the CSI-IMQ Group**, and supports customers throughout the entire development process



Certified



TISAX



History

2013



3 Funders
from **IEHV R&D**
Group
@POLITO

2017



E-MOBILITY
Target setting &
Performance
Engineering

2019-2020



SABELT
2st Investment
Round

UFI Filters
3st Investment
Round

2022



BeonD
Advanced Lab
Facilities

2024 -2025



2024
Leader della Crescita
by
Il Sole 24 Ore &
Statista

2025
Leader
dell'Innovazione by
Corriere della Sera &
Statista

2025



M&A with
CSI-IMQ
Group

CSI & BEOND OFFER: MULTIDISCIPLINARY APPROACH



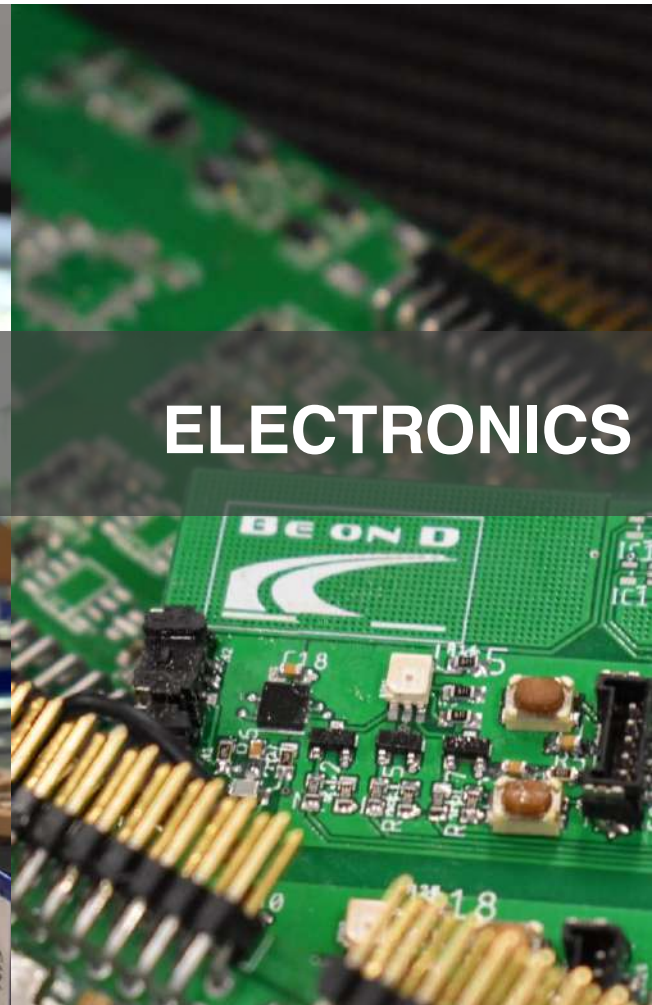
ENGINEERING



**TESTING &
HOMOLOGATION**



PROTOTYPING



ELECTRONICS



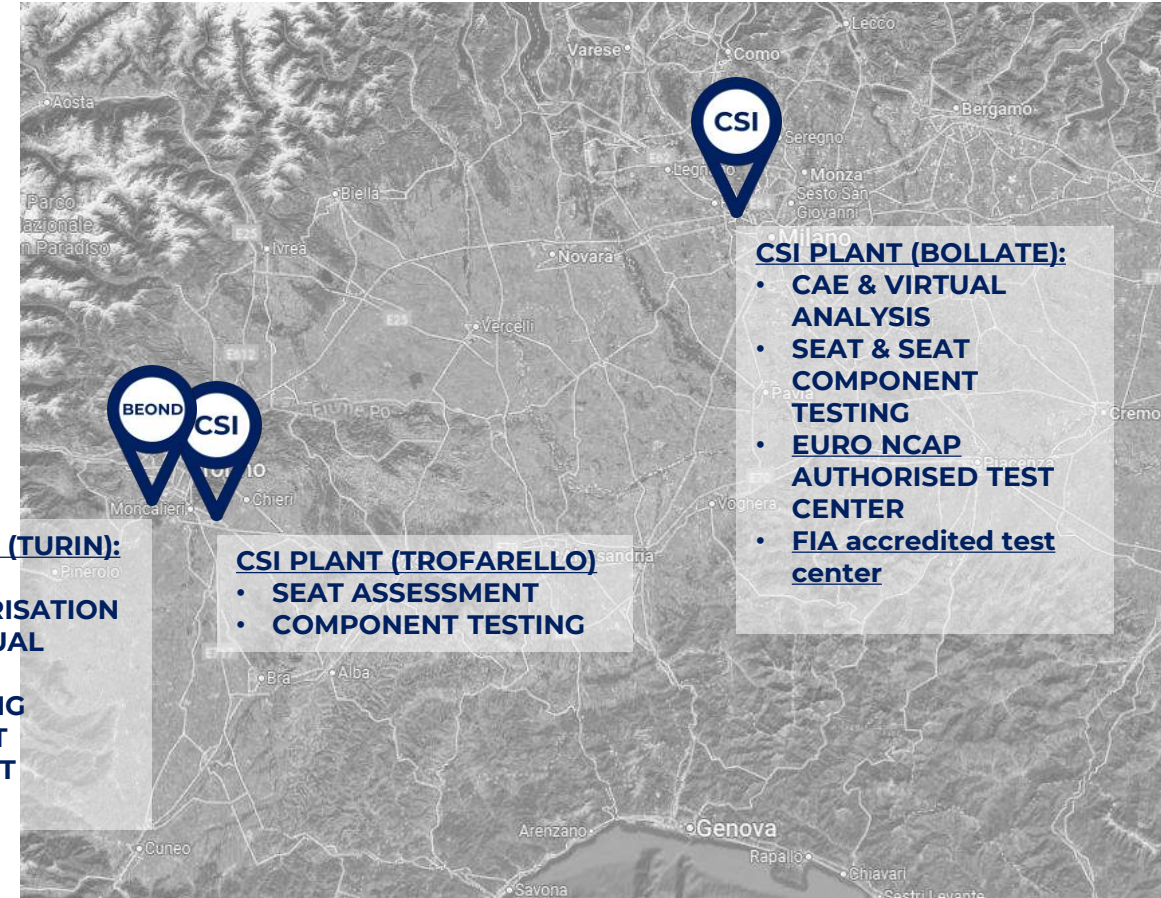
CSI & BEOND OFFER: WHO, WHERE, HOW

• ENGINEERING AND VIRTUAL ANALYSIS

- BEOND PLANT (TURIN)
 - MATERIAL & COMPONENTS CHARACTERISATION
 - CAE & VIRTUAL ANALYSIS
 - ENGINEERING
- CSI PLANT (BOLLATE)
 - CAE & VIRTUAL ANALYSIS

• TESTING

- CSI PLANT (TROFARELLO)
 - STATIC & FATIGUE MECHANICAL TESTS
 - DURABILITY TESTS
 - ENVIRONMENTAL TESTS
 - NOISE AND CREAKING MEASUREMENTS
- CSI PLANT (BOLLATE)
 - HOMOLOGATIONS
 - SLED AND AIRBAG TESTS
 - STATIC & FATIGUE MECHANICAL TESTS
 - VIBRATION & ENVIRONMENTAL TESTS
 - FULL VEHICLE ANALYSIS
 - NVH ANALYSIS
 - EMC



BEOND PLANT (TURIN):

- MATERIAL CHARACTERISATION
- CAE & VIRTUAL ANALYSIS
- ENGINEERING
- SEAT & SEAT COMPONENT TESTING

CSI PLANT (TROFARELLO)

- SEAT ASSESSMENT
- COMPONENT TESTING

CSI PLANT (BOLLATE):

- CAE & VIRTUAL ANALYSIS
- SEAT & SEAT COMPONENT TESTING
- EURO NCAP AUTHORISED TEST CENTER
- FIA accredited test center

SEAT FACILITIES



CSI & BEOND OFFER: MULTIDISCIPLINARY SOLUTION

CSI & BEOND KNOW HOW

ENGINEERING & DESIGN SUPPORT

STRUCTURAL ANALYSIS

CRASH ANALYSIS

SEAT ECU HW & FW
DEVELOPMENT

COMPONENT DEVELOPMENT

COMPONENT TESTING

PERFORMANCE MONITORING

HOMOLOGATION

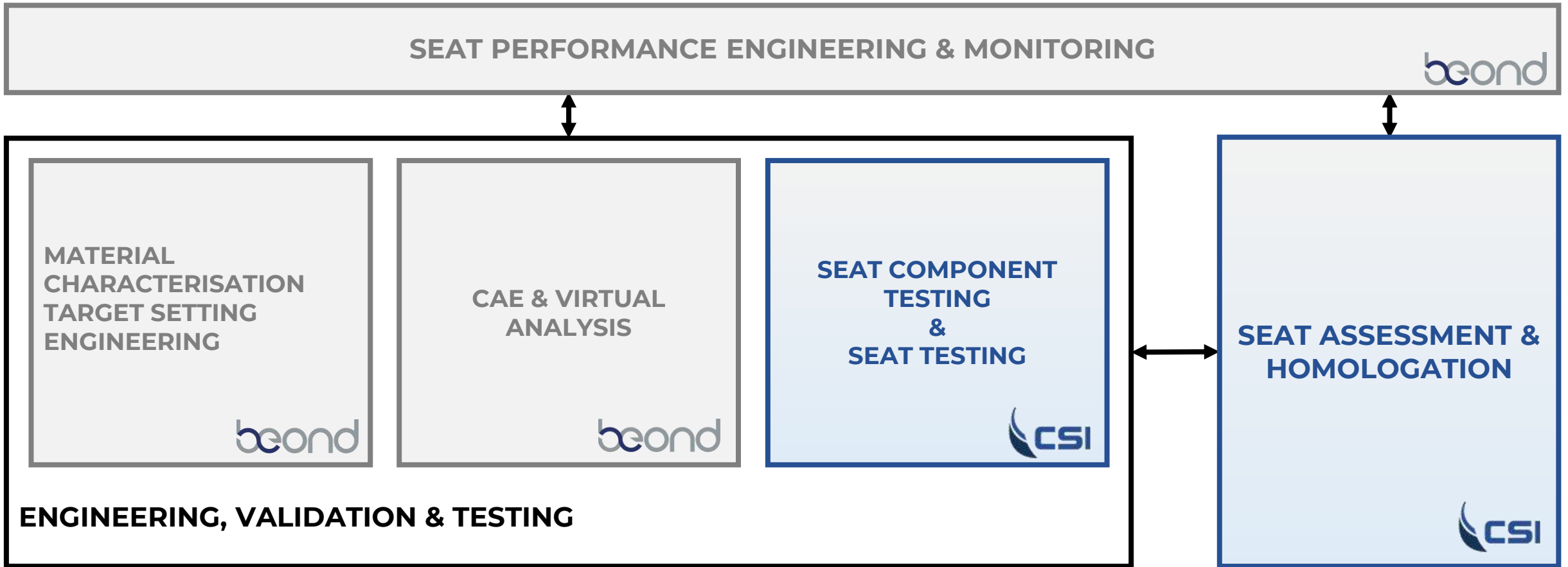
CERTIFICATION

VALUE PROPOSITION

- **END TO END SEAT Design**
- **PERFORMANCE ENGINEERING & TARGET SETTING**
- **MATERIALS CHOICE** and **STACKING SEQUENCE OPTIMIZATION**
- Virtual and experimental **FULL TEST CUSTOMIZATION**
- **TROUBLESHOOTING** support
- **HOMOLOGATION**, assessment and validation



CSI & BEOND OFFER: WHO, WHERE, HOW

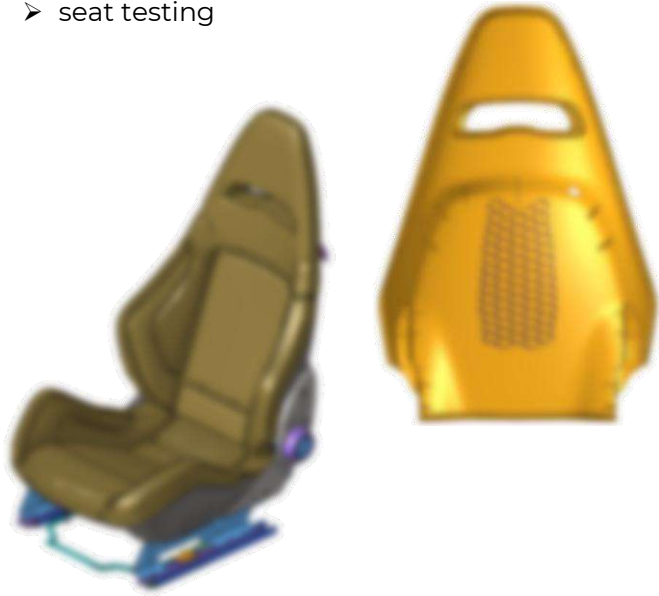


CSI & BEOND OFFER: WORKFLOW

FULL PERFORMANCE MONITORING

ENGINEERING

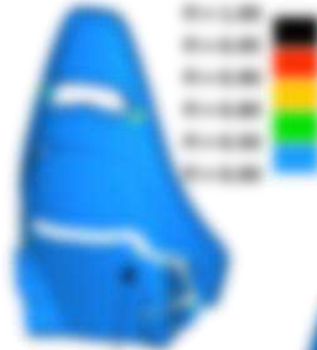
- material characterisation
- CAE & virtual analysis
- seat testing



SEAT DEVELOPMENT

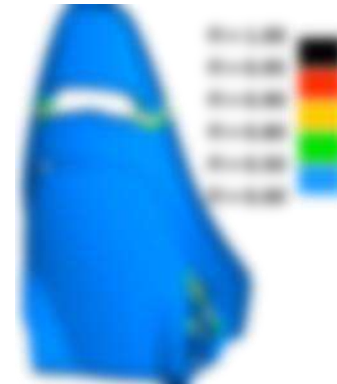
CAE & VIRTUAL ANALYSIS

1st LOOP



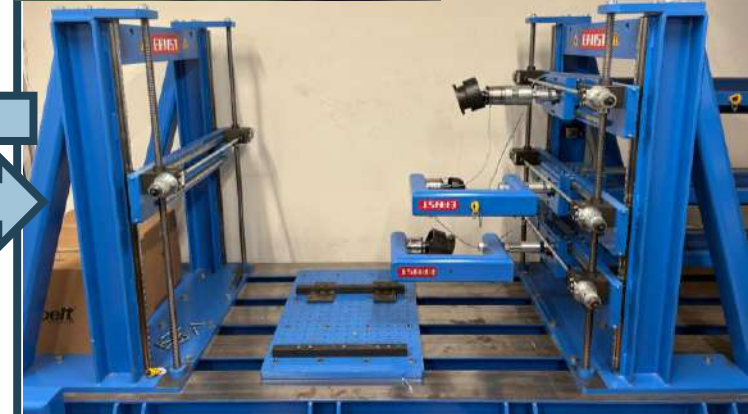
Optimization
of the seat
components

FINAL LOOP



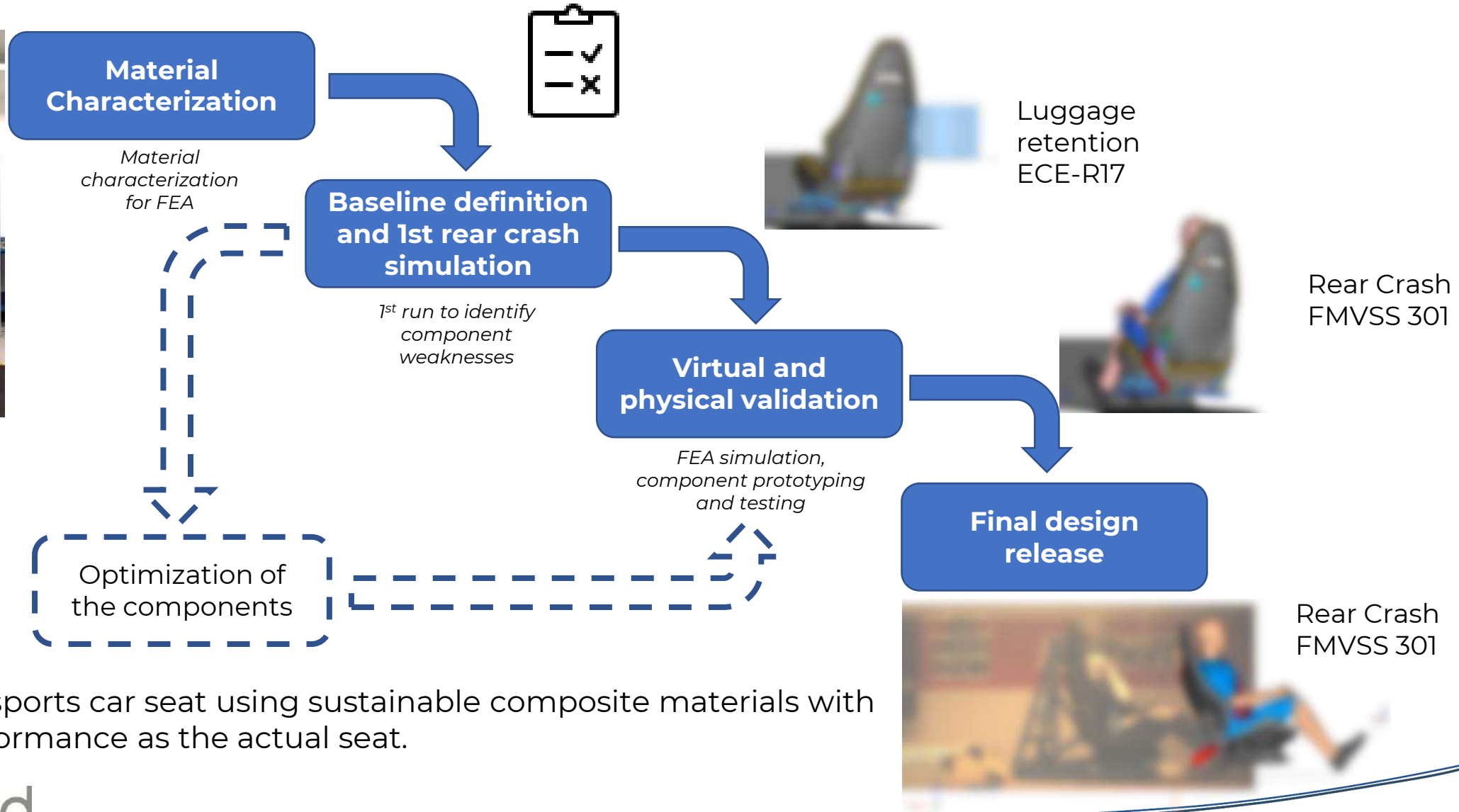
VIRTUAL VALIDATION

FULL SEAT TEST



EXPERIMENTAL VALIDATION
RACING SEATS HOMOLOGATION

CSI & BEOND OFFER: CASE STUDY



MAIN GOAL:

to redesign a sports car seat using sustainable composite materials with the same performance as the actual seat.

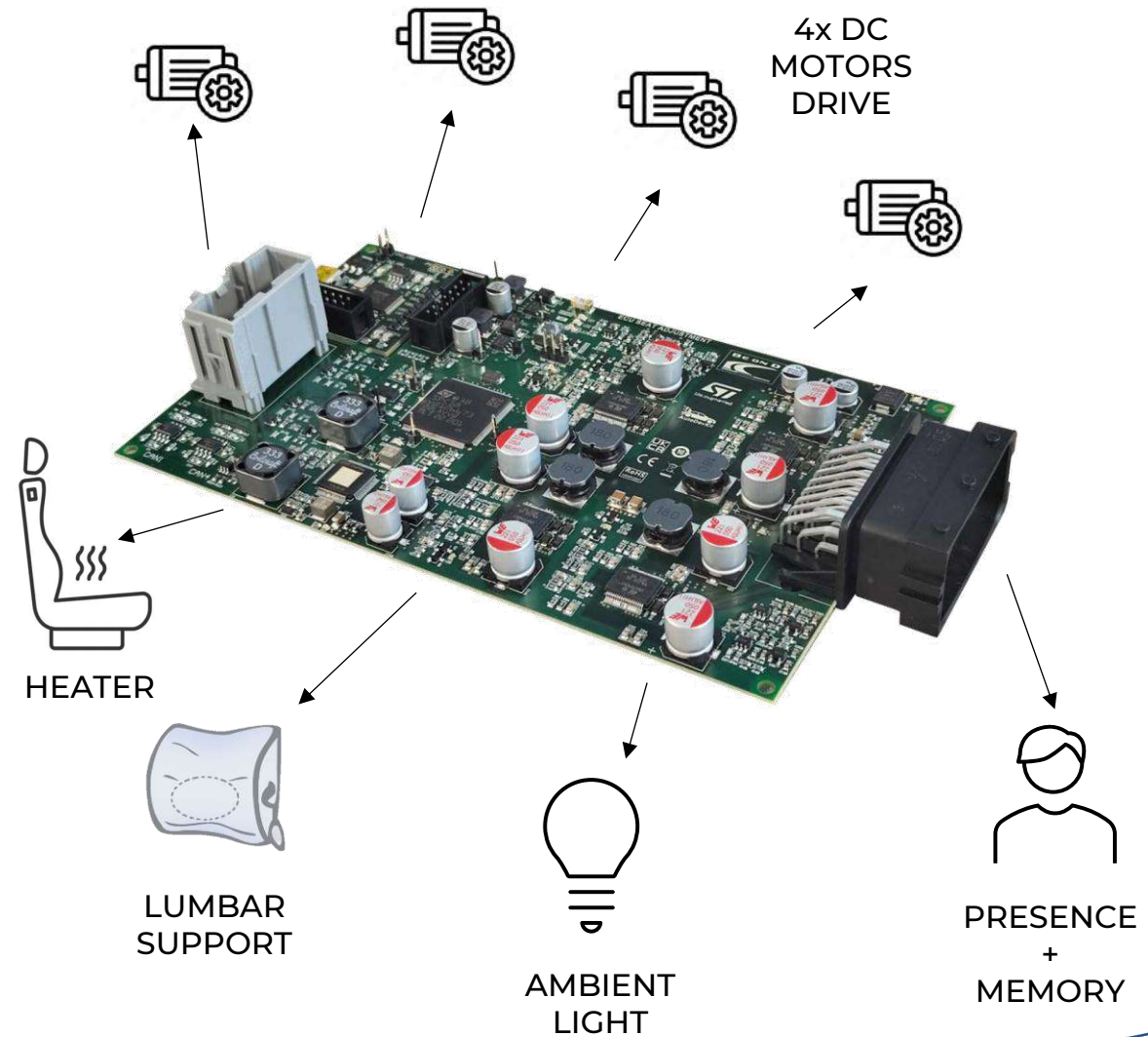


CSI & BEOND OFFER: SEAT CONTROLLER

• **BEOND** partnering **SABELT** and **ST MICROELECTRONICS** developed a seat ECU:

- centralizing functions like a zonal controller;
- Increasing scalability;
- Reducing weight;
- Working on LV bus and communicating over CAN bus
- Integrating lightning and safety functions.

• The board was completed by a **GATEWAY FEATURE** to foster communication and control over BLUETOOTH.



CSI & BEOND OFFER: We could play a pivotal role

Our role:

- **BEOND & CSI act as a technological enabler in:**
 - Advanced engineering on mechatronics and high-performance products;
 - Research on materials;
 - New architectures and design proposals.
- **We cooperate with local stakeholders in several areas:**
 - Seats design and optimization;
 - Advanced materials and architectures;
 - Validation, homologation and assessment.
- **Beond is now part of CSI – IMQ Group and acts as a catalyst for industry, research, and institutions.**



The logo for IMQ group, featuring the letters 'IMQ' in a large, bold, white sans-serif font, with the word 'group' in a smaller, lowercase white sans-serif font directly below it. The background is a dark blue, futuristic scene with glowing orange and blue bokeh lights and a central glowing sphere with orbital paths.

IMQ
group

The IMQ logo, consisting of a stylized white wing-like icon to the left of the letters 'IMQ' in a bold, white sans-serif font.

IMQ

The CSI beond logo, featuring a stylized white wing-like icon to the left of the text 'CSI' in a bold, white sans-serif font, with the word 'beond' in a smaller, lowercase white sans-serif font below it.

CSI
beond

The IMQ intuity logo, featuring a stylized white wing-like icon to the left of the text 'IMQ' in a bold, white sans-serif font, with the word 'intuity' in a lowercase white sans-serif font below it.

IMQ
intuity

ITALY | CHINA | GERMANY | INDIA | POLAND | SPAIN | TURKEY | UAE | UK

TOGETHER **TOWARD** EXCELLENCE

