

01 / 02
DECEMBER, 2025
CZECH REPUBLIC DOLNÍ OBLAST VÍTKOVICE
OSTRAVA



DVN OSTRAVA LIGHTING WORKSHOP

CONFERENCE • EXPO

38TH DVN
WORKSHOP

VEHICLE LIGHTING IN CZECHIA:
FROM HISTORY TO NEW TECH & INNOVATION





Solutions for LED headlamps...and more !

**Digital sensing for
Autoleveling**



Lumems

**Stepper motors for
Aiming automation**



Vertical



Horizontal

**Active Condensation
Management**

CMD2



ESL



ISL



Visit our booth !

www.johnsonelectric.com

sales@johnsonelectric.com





ECOGLOSS



MORE THAN GLASS !



www.ecoglass-optic.com

 Glass optics designer and manufacturer
from Czech Republic

LIGHTING SOLUTIONS

for the future of mobility

LIGHTING COMPETENCES

LIGHTING SYSTEMS

- ZONAL CONTROLLER
- CLASSIC LCU
- AFS LCU
- SIGNAL LIGHT LCU
- ADVANCED FRONT LCU
- HD LIGHTING



LIGHTING SERVICE

- MECHANICAL DESIGN
- OPTICAL SIMULATIONS
- SYSTEM ENGINEERING
- SOFTWARE DEVELOPMENT
- ELECTRONICS DEVELOPMENT
- PROJECT MANAGEMENT
- VERIFICATION & VALIDATION
- CAE SIMULATION

Nearshore Engineering Partner

Optimizing your development costs and bridging capacity and talent gaps. European standards, systems, and process expertise grounded in geographical and cultural proximity. Trusted by key players in the railway industry and beyond.



300+
Employees



240+
Engineers



BCC
BestCostCountry



120+
Active customers



12+
Years in the market



95%
Client retention

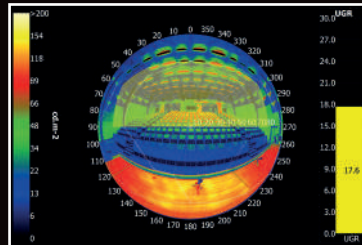
Luminance Analyser LumiDISP - LDA ML6

The vision has become a reality - the results of research and development have turned a digital camera into a sophisticated photometer. Get a mobile, laboratory-calibrated and user-friendly **analyser** for a wide range of applications. The device has parameters comparable to instruments many times more expensive, allowing it to significantly improve the accuracy and speed of measurements, and thus increase the resulting price/performance ratio.

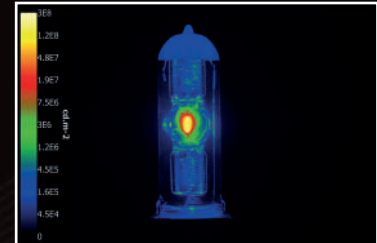
Road lighting



UGR



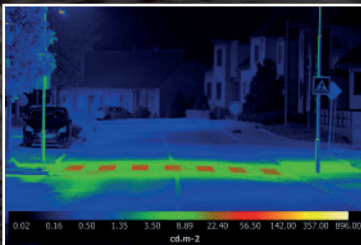
Light source luminance analysis



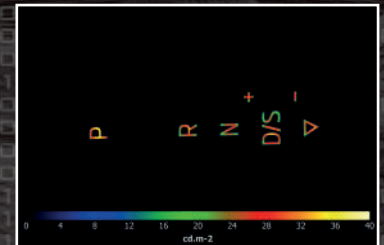
Award
Golden AMPER 2019



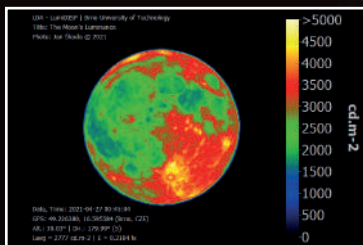
Crosswalk



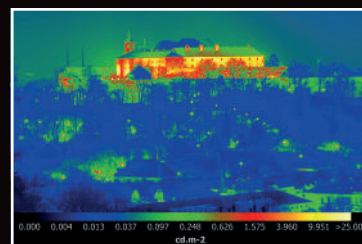
Displays and imagers



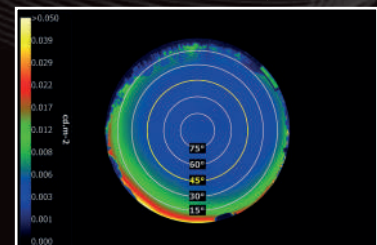
Scientific measurements



Building and advertising luminance analysis



Disturbing light, light pollution

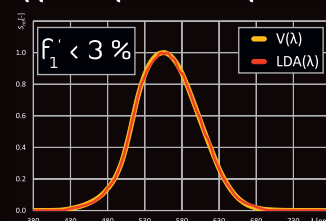


Book a demonstration of the device and an expert consultation on applications.

Benefits and Technical Specification

- Complete instrument with calibration certificate
- Control directly from the instrument or via computer
- Storage of data in a PC database or on an SD card
- Convenient data processing later in the office
- Easy export of tables, graphs, images
- Batch processing of large numbers of measurements
- Wide range of detectors, user templates
- Arithmetic module for custom algorithms

Typical spectral response:



Hardware:

- Sensor: BSI CMOS 24,5 Mpx
- A/D: 14 bit / 16,384 levels
- Measure Range: 0.001 – 10,000,000 cd/m²

Software: 2x licence of LumiDISP ver. 3

- Optional Accessories: Tripod, ND filter
- NIST Traceable



www.lumidisp.eu

EDAG COC LIGHTING

„EDAG IS YOUR COMPREHENSIVE PARTNER IN ENGINEERING AND VALIDATION SERVICES FOR LIGHTING SYSTEMS, OFFERING ALL-IN-ONE-HAND 360° SUPPORT!“

Content and function specification

Lighting content and functions
Customer Level 0 requirements

Concept and system topology

Optical technologies
Architecture and schematics

Requirement definition

Luminance, Homogeneity, ...
CAN, LIN, Current

Styling and surfacing

Animation design
Surface development
(Design&STRAK)

Hardware and design

Component and part design
Optical, thermal and other simulation

Function testing

Vehicle and function
verification Level 0-2

System testing and integration

System HIL
Mechanical vehicle integration

Component testing

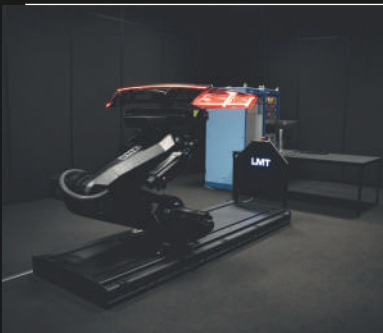
Climate, Vibration, Stiffness (DVP)
Component HIL

Software and EE HW

PCB design
SW&D basetech and application

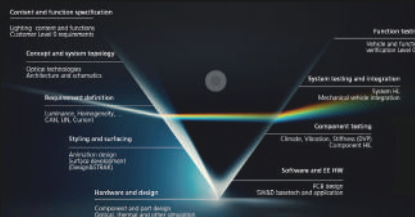
GOLDEN TOP3 – WHY EDAG?

1 Measurement of complex front, rear and interior lighting systems >1m



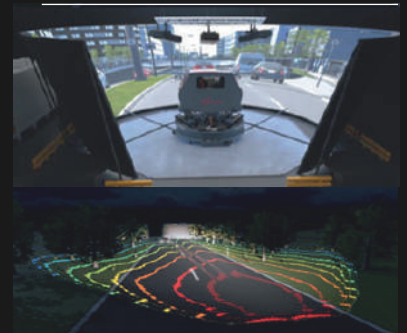
- Gonio photometric measurements all markets
- Luminance measurements – homogeneity
- Spectral measurement – color

2 Complete Engineering and DVP in – “one hand”



- Requirement specification
- Product development:
 - Styling
 - Mechanical design
 - Simulation in CAE, CFD & CAL
 - EE Hardware development
 - Software development
- Component-, System- and Function validation

3 Virtual prototype validation



- Virtual night drive in dynamic vehicles driving simulator based on .ies files
- Same location as light lab in CoC Germany
- ECU application with CANoe interface in virtual environment



Contact

lighting@edag.com





Lighting the Path to Innovation, Safety & Styling

Magna is a leader in advanced automotive lighting technology, delivering innovative solutions that enhance safety, performance, and design. With deep expertise in micro and mini LED technology, we create sleek, energy-efficient lighting systems that push the boundaries of styling and functionality. Our solutions support the latest safety regulations, including FMVSS-compliant Adaptive Driving Beams (ADB), which intelligently adjust light distribution to maximize driver visibility without blinding oncoming traffic.

At Magna, we're shaping the future of mobility through smart, sustainable, and stylish lighting innovations.

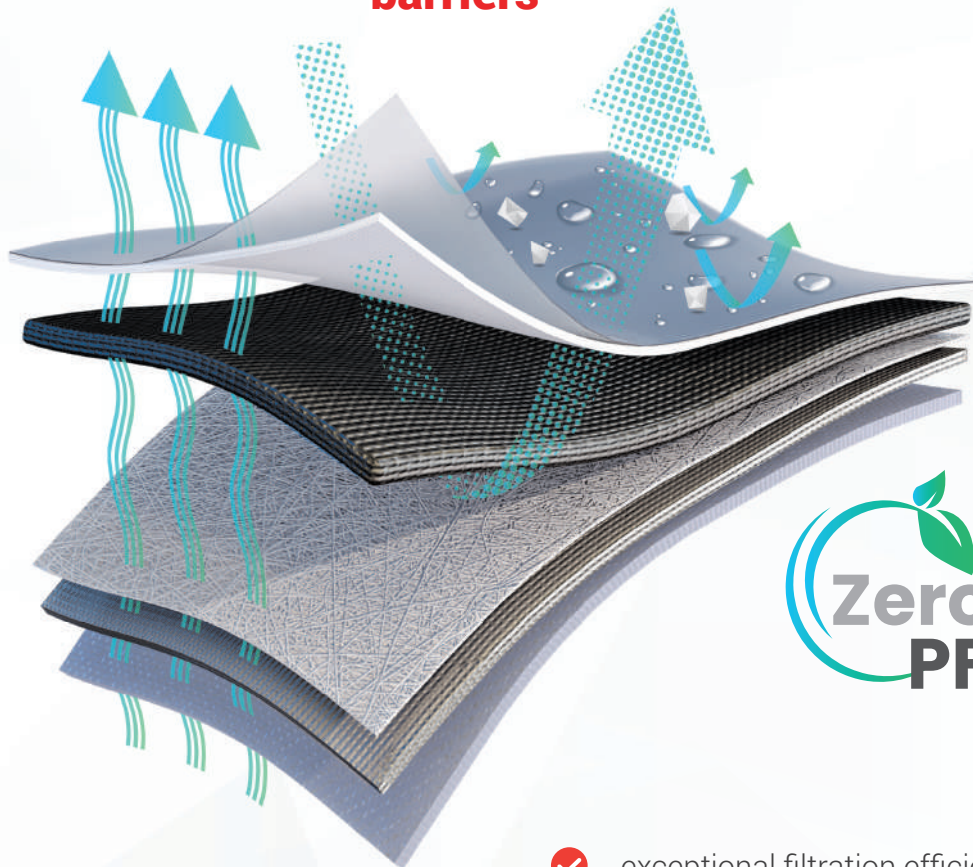


Learn more about our
Lighting technology at
magna.com



NanoVents

**PFAS-free Vapour permeable
venting & protective nanomembrane
barriers**



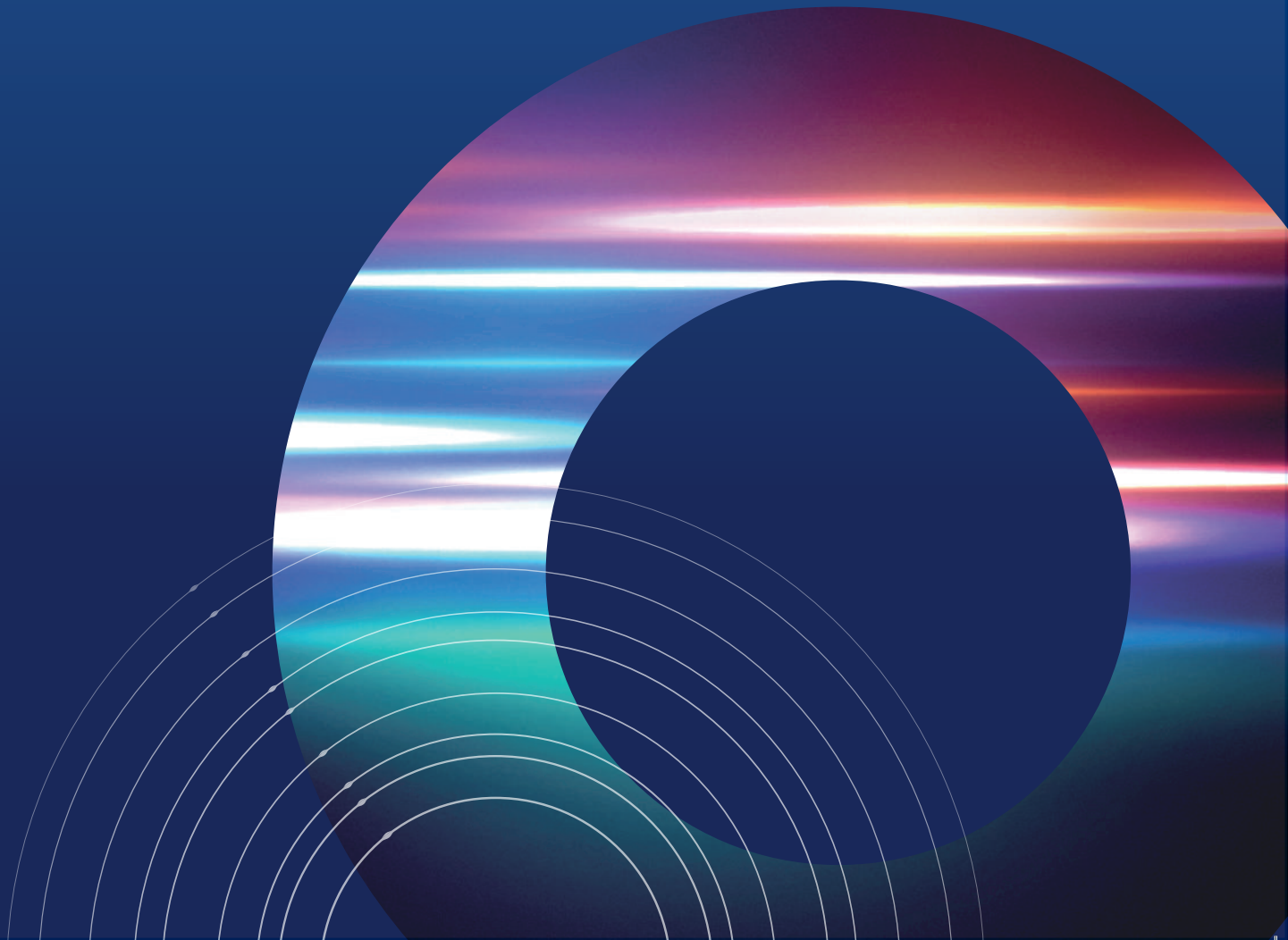
- ✓ ZeroPF – 100% PFAS/PFOA/PTFE-free
- ✓ high airflow
- ✓ fast pressure equalization
- ✓ superior vapour permeability
- ✓ high hydrostatic resistance
- ✓ exceptional filtration efficiency
- ✓ enhanced desiccation capability
- ✓ adjustable multilayer construction
- ✓ high rigidity / long-term durability
- ✓ high-performance nanocomposite surface treatment

www.nanovents.com

ADVANCED LIGHTING SOLUTIONS FOR ICONIC INTERACTION

OPmobility's advanced lighting solutions go beyond illumination—they amplify identity and enable interaction. From signature styling to dynamic communication, our technology integrates design and intelligence for the next generation of mobility.

Visit us at booth #16 to learn more.





REICHLÉ ENGRAVING ATELIER

In his own living room, Volker Reichle establishes his one-man business under the name 'Reichle Engraving Atelier'

19
81

REICHLÉ
TECHNOLOGIEZENTRUM

THE ART OF PERFECTION

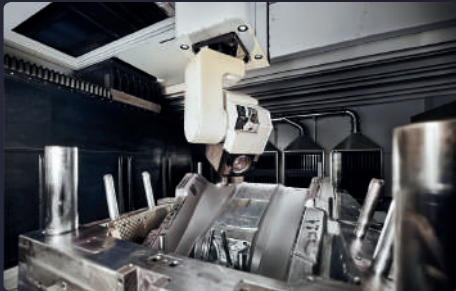
45 YEARS OF SURFACES

20
04



EXPANSION OF THE SERVICE PORTFOLIO

A laser engraving machine is purchased and the service portfolio is expanded to include contour restoration, polishing and sandblasting



INVESTMENT IN LASER TEXTURING

The company is investing in laser texturing machines for the first time

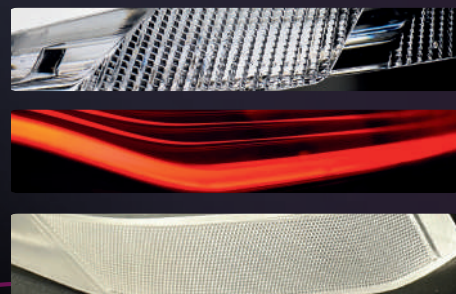
20
12

20
20



WORLD'S LARGEST GLOBAL NETWORK FOR LASER TEXTURING

More than 50 laser systems; project management, R&D, design, consulting, mapping, programming, warranty in Germany



LIGHT DEVELOPMENT & FEMTO LASER TECHNOLOGY

Reichle is a development supplier for lighting applications, including special femto laser technology and the world's largest femto laser system

20
25

Sony DADC

Micro Optics

BRIGHT VISIONS

smart solutions!



PRECISION POLYMER OPTICS

Enable Next-Generation Optical
Solutions for Automotive Lighting



www.sonydadc.com



[A member of LG]

BRIGHT MINDS,
BRIGHT LIGHTS.



Visit our Website
www.zkw-group.com



[VISIT US AT BOOTH #18]



Let's Make Optics for the Future. Together.

