

Presenting:

BRIGHT  
WAY   
VISION  
driving clarity

2025

Covering  
Night, Day, and  
Any Weather  
**with a Single Camera**

for Today's Automotive and  
Surveillance Markets

# VISDOM at Night



HDR Camera



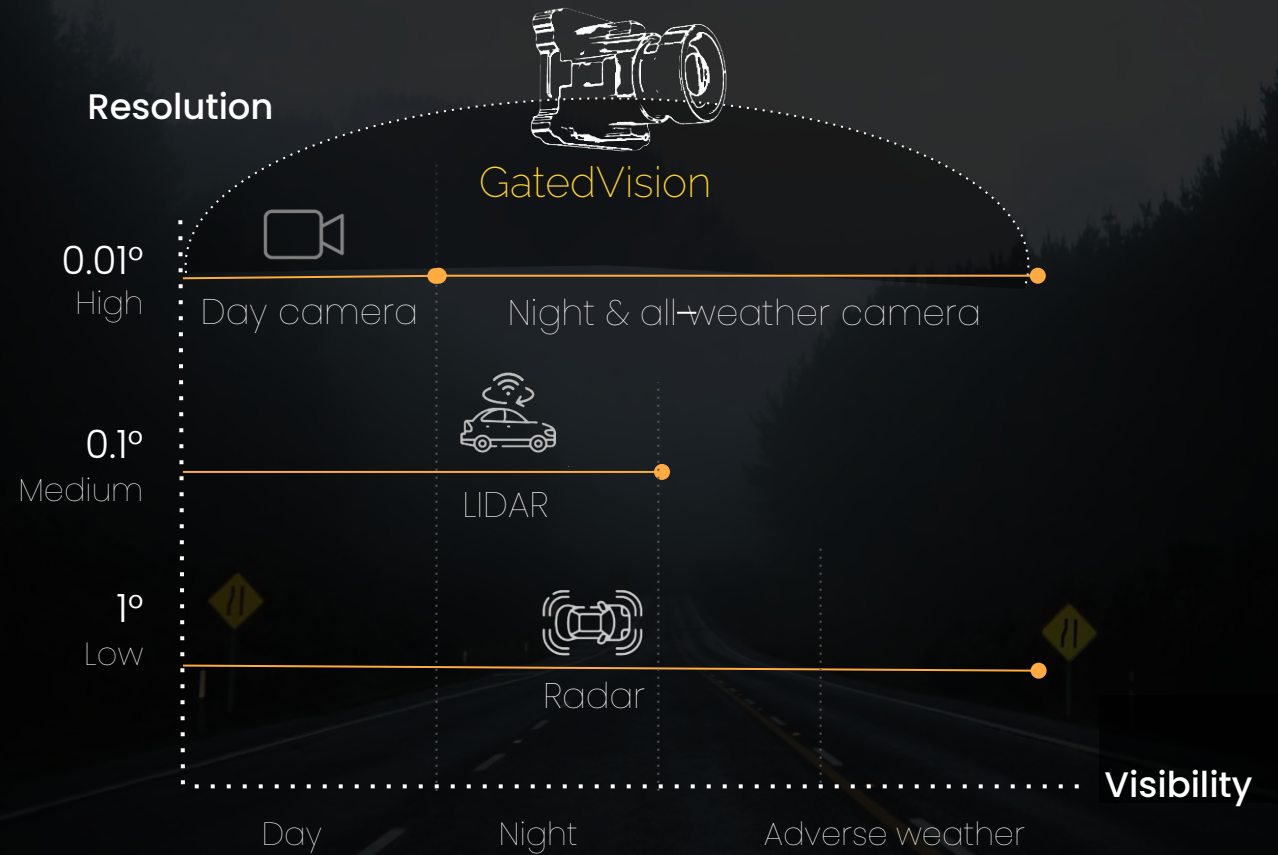
VISDOM, AWARD-WINNING PRODUCT

Introducing:  
**Bright Way Vision**

**See through complete darkness and any low-visibility weather**

enabling safe operations and true business continuity.

Today's sensor technologies offer only **limited visibility**



# VISDOM GatedVision System

## Product Highlights

- Patented GatedVision\* CMOS camera
- Synchronized pulsed illuminator
- Advanced automatic all-weather image optimization control
- Configurable system range

## Specifications

- FoV 30°x18° / 16°x10°
- Image resolution 800x480 pixels
- Superior Contrast
- Low visibility enhanced performance (e.g. fog & rain penetration)

## Camera



## Pulsed NIR illuminator

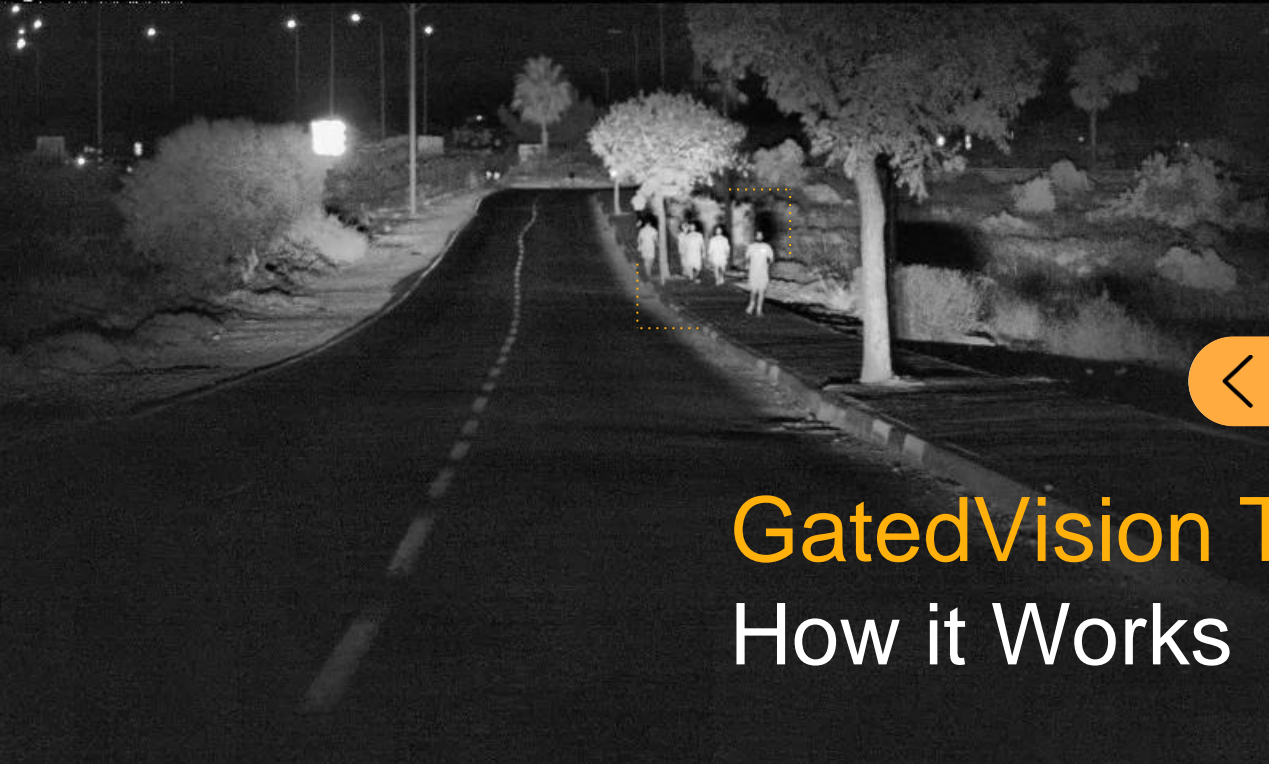


\* GatedVision – BWV proprietary technology



Bright Way Vision  
**VISDOM**

Visible HDR

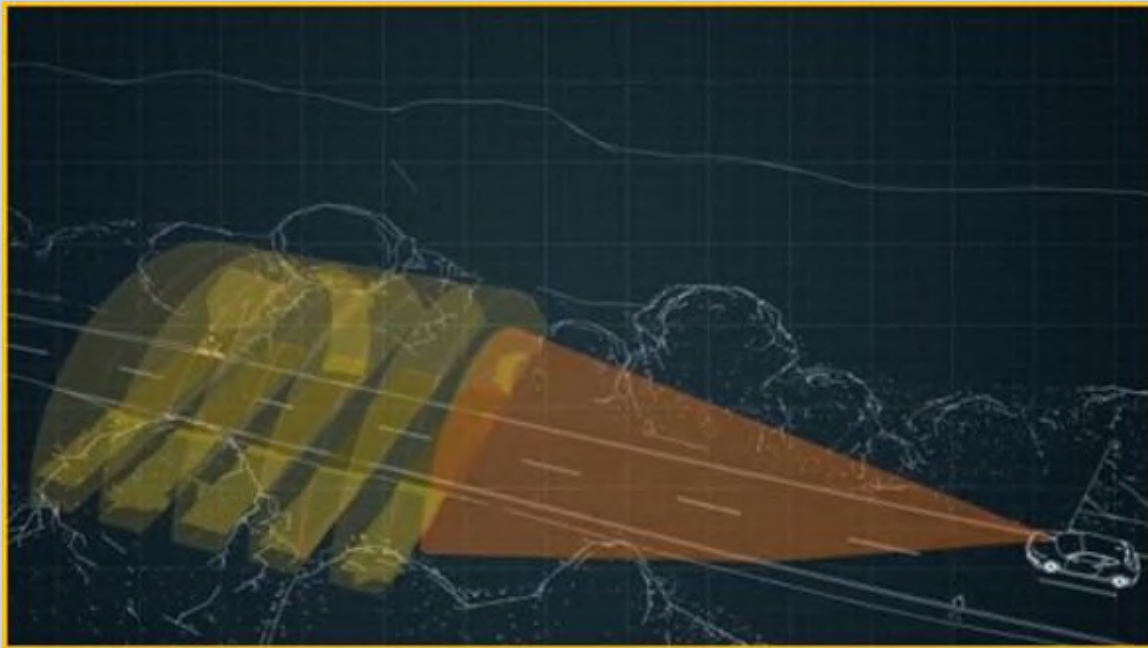


# GatedVision Technology

## How it Works

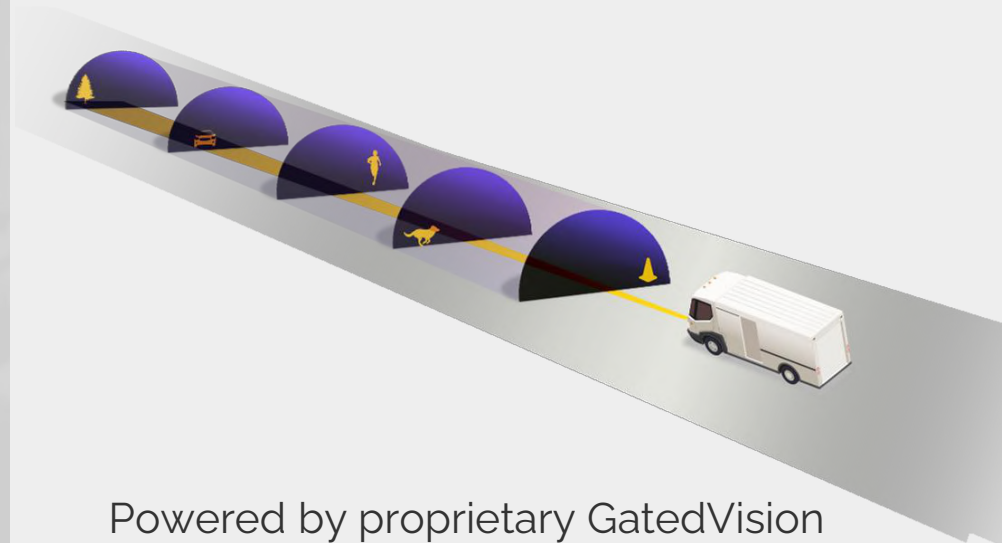
# GatedVision

How The Technology Works ?



## Benefits:

- Over 250 m clear vision range
- Uniform illumination across all ranges.
- Rain snow and fog penetration by Backscatter avoidance



Powered by proprietary GatedVision technology and protected by 30 patents, VISDOM camera incorporates an extended-range imaging technology that produces high-contrast images from thousands of micro-exposures per frame with dynamic and variable range slices.

# GatedVision

## Slices Technology

- Enables to collect light returning only from a desired range (a slice)
- Slices can be provided in addition to standard video stream

### Uses:

- Remove background clutter / improve contrast
- Detects objects only from a desired range



30m



55m



90m

Range →



**Slice 1** | 20-50m



**Slice 2** | 50-70m



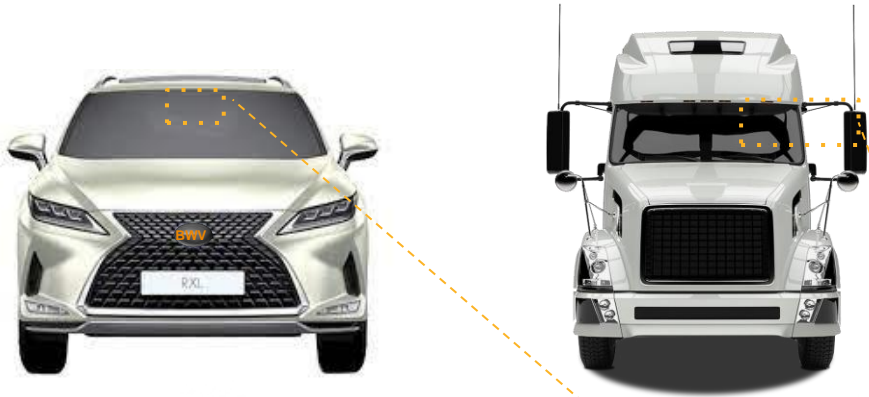
**Slice 3** | 80-100m



**Full Range** | 10-250m

# VISDOM – Automotive

Camera behind windshield or mirror



Illuminator in Head or Fog lamps



Illuminator

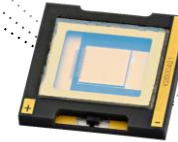


Camera

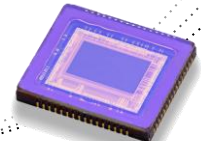


**VISDOM**

Camera System  
Kit & Modules



**Illuminator VCSEL**



**Gated CMOS**

VCSEL – AECQ Verified

AGCMOS – AECQ Verified

System – ISO26262 and ASIL ongoing

ISP – ongoing improvement for automation per scenario

Detection – ongoing development of specific GatedVision related algorithms

# Natural Fog | Golan Heights



HDR camera



LI-AR0233, 2.6MP

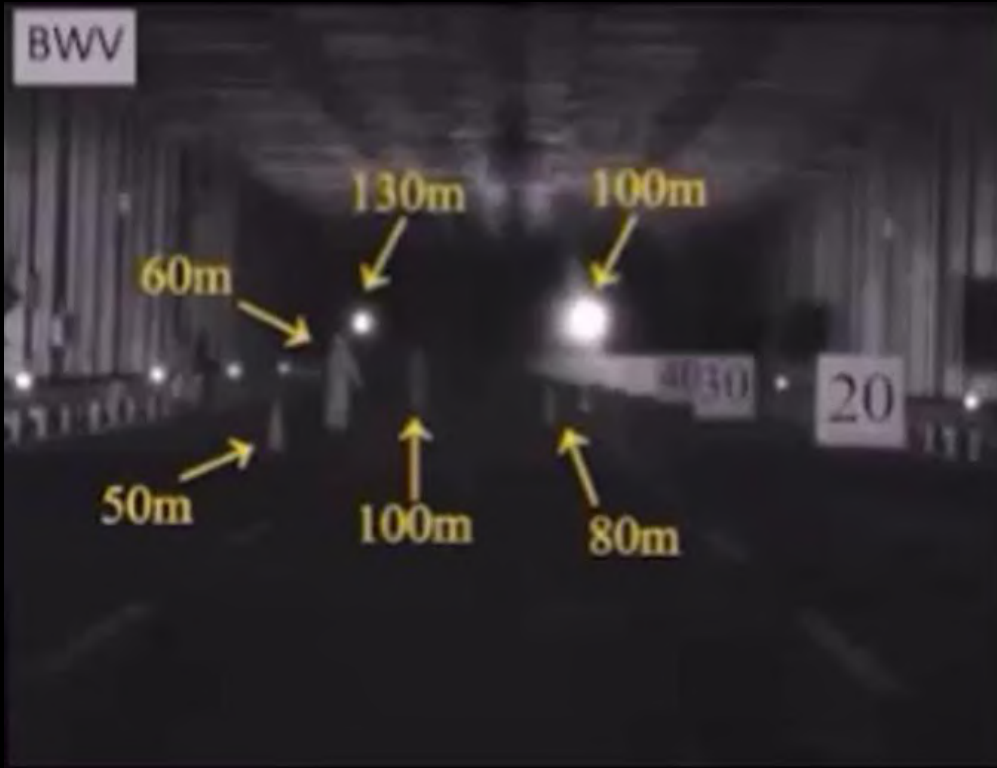


# Heavy Rain

- Extensively tested in controlled conditions
- 200m weather chamber



## Standard camera



Comparative testing in 80 mm/hr rain (equivalent to a *Typhoon*)



# Heavy Snow Conditions

- HDR camera – strong backscatter
- Thermal imager – no contrast



HDR camera



GatedVision



Visible light



LWIR Thermal

# Situational awareness enhancement



HDR camera



LI-AR0233, 2.6MP

# Low-light visibility enhancement



HDR camera



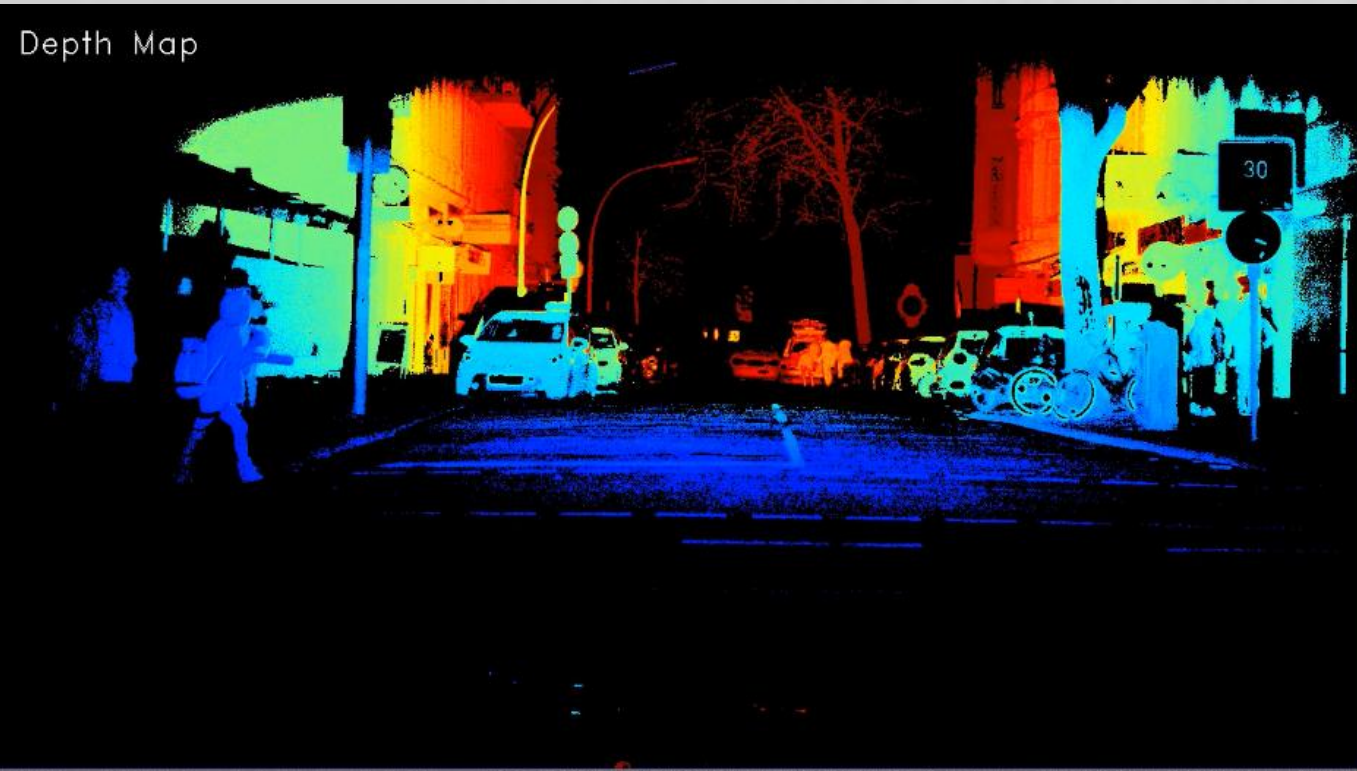
LI-AR0233, 2.6MP



# VISDOM $\Sigma$ Depth measurement from a single camera



RGB Camera



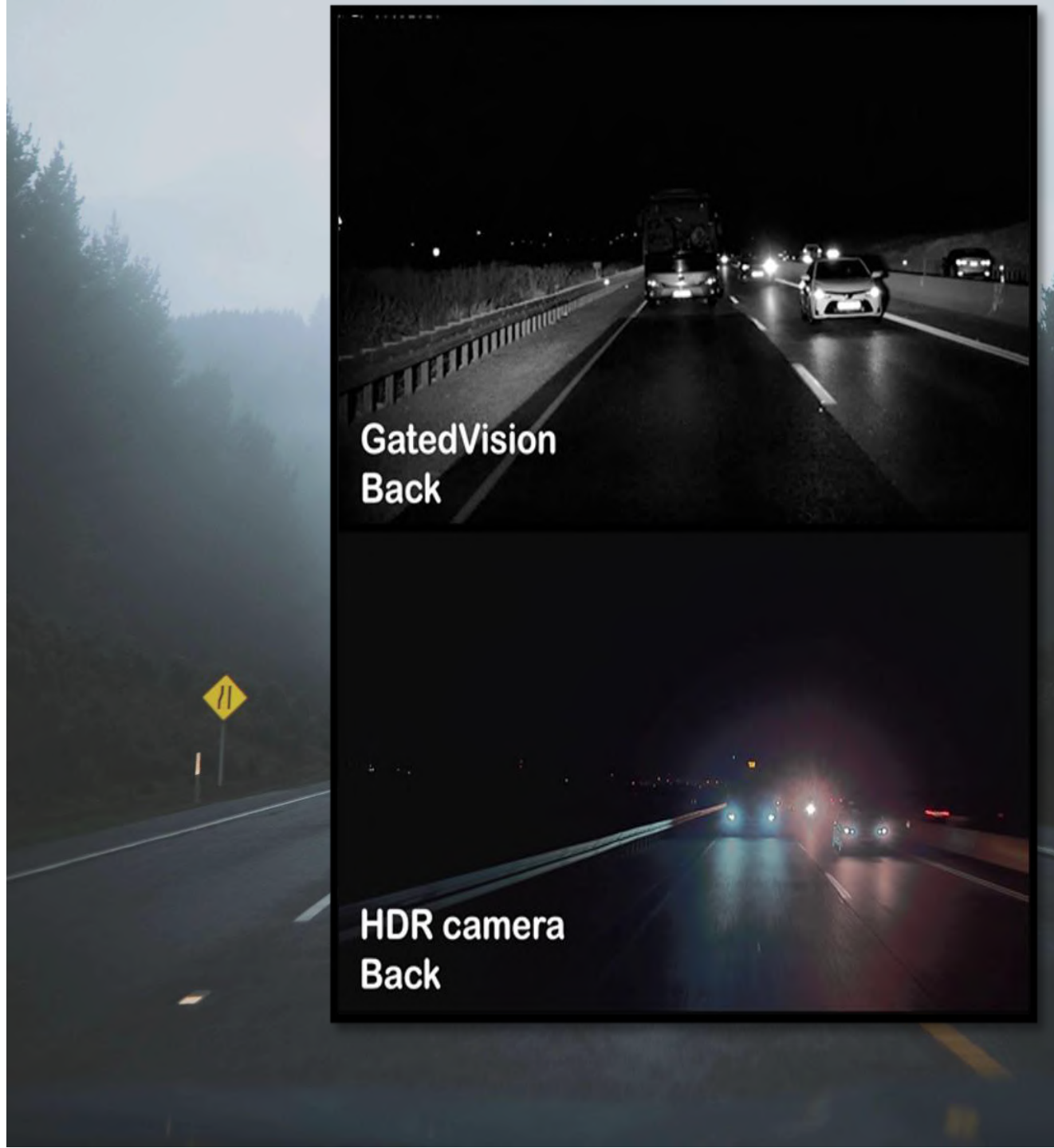
Pixel-level 3D depth map

## Rear View –

Day, Night Vision and Adverse Weather

- Safe lane merging and lane changing
- Rear lane marks detection in complete darkness
- Lane-allocation of traffic coming from behind
- Detection and classification of objects behind
- **Detect vehicles with no/missing headlights**
- No blinding from tailing headlights

See through complete darkness,  
even during rain, fog and snow





# VISDOM - Seeing **is believing**

Email us:  
[Eyal.levi@bw-vision.com](mailto:Eyal.levi@bw-vision.com)

Thanks