

# arbe

Radar Revolution. Delivered.

---

## Radar Systems for Eyes Off Applications

Kobi Marenko | CEO

DVN Sensing & Applications 2025 | Nov, 2025



# Disclaimer

This Presentation contains “forward-looking statements” within the meaning of the Securities Act of 1933 and the Securities Exchange Act of 1934, both as amended by the Private Securities Litigation Reform Act of 1995. The words “expect,” “believe,” “estimate,” “intend,” “plan,” “anticipate,” “may,” “should,” “strategy,” “future,” “will,” “project,” “potential” and similar expressions indicate forward-looking statements. Forward-looking statements are predictions, projections and other statements about future events that are based on current expectations and assumptions and, as a result, are subject to risks and uncertainties. These risks and uncertainties include ; the effect on the Israeli economy generally and on Arbe’s business resulting from the terrorism and the hostilities in Israel and with its neighboring countries including the effects of the continuing war with Hamas in Gaza and any intensification of hostilities with others, including Iran and Hezbollah, and the effect of the call-up of a significant portion of its working population, including the Company’s employees; the effect of any potential boycott both of Israeli products and business and of stocks in Israeli companies; the effect of any downgrading of the Israeli economy, the ability of any Tier-1s and manufacturers who order our products to meet production schedules and to market its products as contemplated, and the effect of changes in the exchange rate between the US dollar and the Israeli shekel; and the risk and uncertainties described in “Cautionary Note Regarding Forward-Looking Statements,” “Item 3. Key Information – D. Risk Factors” and “Item 5. Operating and Financial Review and Prospects” in the Company’s Annual Report on Form 20-F for the year ended December 31, 2024, which was filed with the Securities and Exchange Commission (the “SEC”) on March 28, 2025, as well as other documents filed by Arbe with the SEC. Accordingly, you are cautioned not to place undue reliance on these forward-looking statements. Forward-looking statements relate only to the date they were made, and Arbe does not undertake any obligation to update forward-looking statements to reflect events or circumstances after the date they were made except as required by law or applicable regulation. Information contained on, or that can be accessed through, Arbe’s website or any other website or any social media is expressly not incorporated by reference into and is not a part of this presentation.

## First Mover & Market Leader in Next-Gen imaging Radar

Arbe is a leading automotive semiconductor company developing the only solution for truly safe L2+ automotive.



**Dual Stock Exchange Listing**

NASDAQ, TASE



**Global Offices**

Israel, Germany, China, USA



**140 Team Members**

~75% R&D

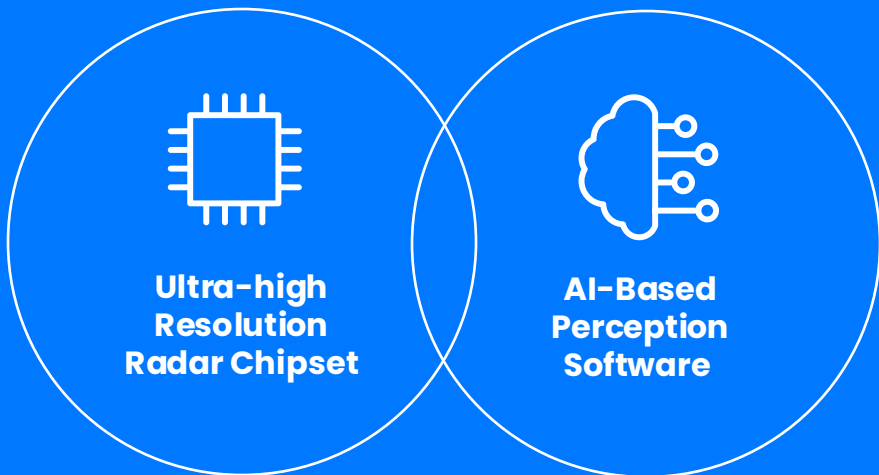


**Strong Balance Sheet**

±\$62M in cash

## Products

- Enabling L2+ Through Fully Autonomous Driving
- 15 Patents



## Go-To-Market

- Selected by a Top 10 OEM in Q2 2024
- In Selection Process with 11 of the top 15 OEMs globally

### Chipset Manufacturing



### Radar Tier 1s



### Ecosystem



## Strong Pipeline

2026



**Non-automotive In Production. China from 2026**

2027



**Starting revenues in Europe in early 2027**

# Chosen by Industry Leaders



One of the top ten OEMs worldwide chose Arbe's chipset for serial production



Leading European OEMs use Arbe's radar tech for data collection in support of their 2028 year model vehicles (nomination expected soon)

A large Japanese automotive company is using Arbe's radar solution in a massive ADAS/AD data collection for L4



Defense customers in production for autonomous vehicles & detection of drones

Smart cities applications



A European truck manufacturer collaborating to integrate Arbe's chipset into next-gen sensor suite

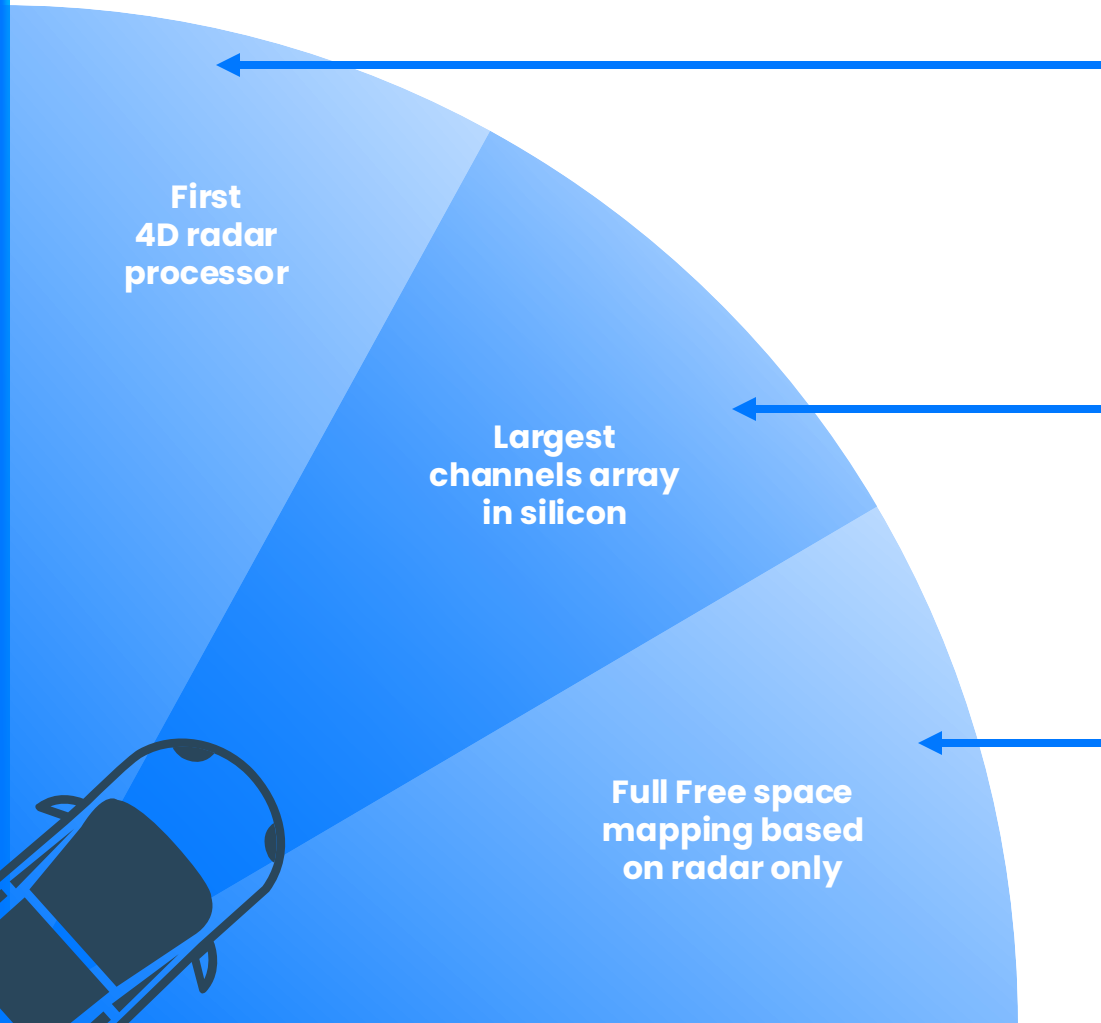
Port of Rizhao chose HiRain radars, powered by the Arbe chipset, for FAW trucks and AGVs

What improvements are needed to make sure Radars meet ADAS and Autonomous Driving performance requirements?



Use Case	Radar Requirement
High speed	Long range
Hands-free operation	Short latency
Highway safe – lost cargo	Good separation High azimuth dynamic range
Tunnels, bridges	High elevation dynamic range
Dependable safety system	Minimal false alarms
Support fusion with other sensors	High resolution High update rate

# Groundbreaking 4D Imaging Radar Chipset Solution



### Radar Processor on chip

Advanced radar control supporting up to 48 Rx \* 48 Tx channels



### Transmitter

24-48 transmitters, Tx power control



### Receiver

12-48 receivers, large Rx dynamic range



### AI Based Perception

Converts analog raw data into a digital data set for safety and autonomy applications

## Chipset Highlights

- Highest channel count in the industry (2304 vs. 12/48/256)
- 3Tb/s equivalent processing throughput
- Up to 30K detections at >20 frames per second
- Low power consumption
- Software defined
- Automotive grade

# A Quantum Leap in Radar Technology

Solution	Channels	Processing Solution
3x4	12	DSP
8x8	64	Multipurpose processor
16x16	256	NXP / TI multipurpose processor
32x48 (18 ICs)	1,536	Mobileye unique algorithm on dedicated processor
<b>48x48 (7 ICs)</b>	<b>2,304</b>	<b>Arbe unique algorithm on dedicated processor</b>



**Arbe delivers the highest resolution,  
accuracy and separation in 4D**

10X MORE DATA | DENSE POINT CLOUD | SEAMLESS CAMERA FUSION

48x48 Beam Pattern

## Seeing the Complete Picture

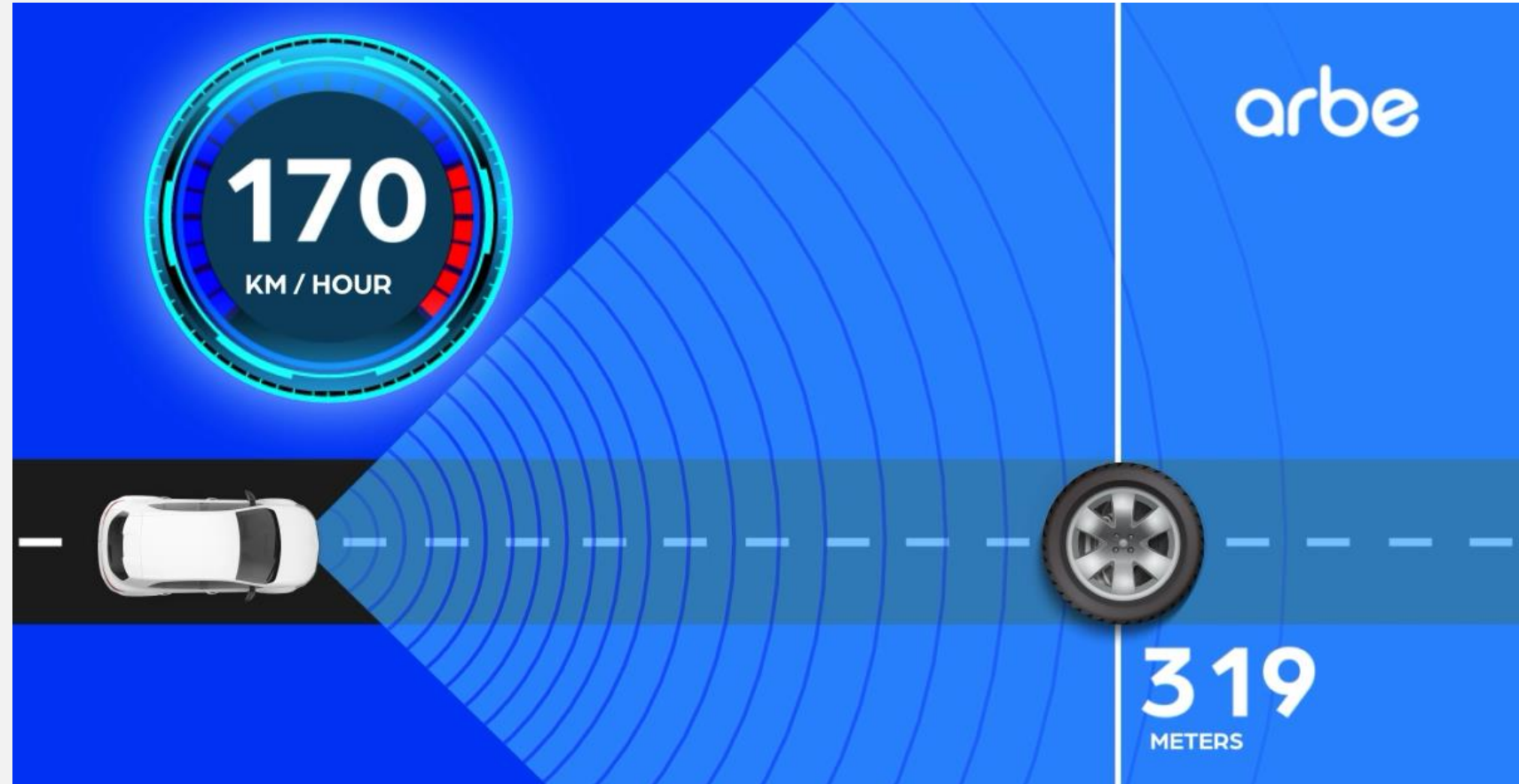


## Importance of low latency in safety applications

- Solving ambiguities in post processing takes several detection cycles
- Avoiding ambiguities shortens the response time

## High resolution = high target load

- Processing HW (cost)
- Power consumption
- Latency



## The Ambiguity Challenge

REAL CAR  
ON ROAD



# Massive Channel Array In Action

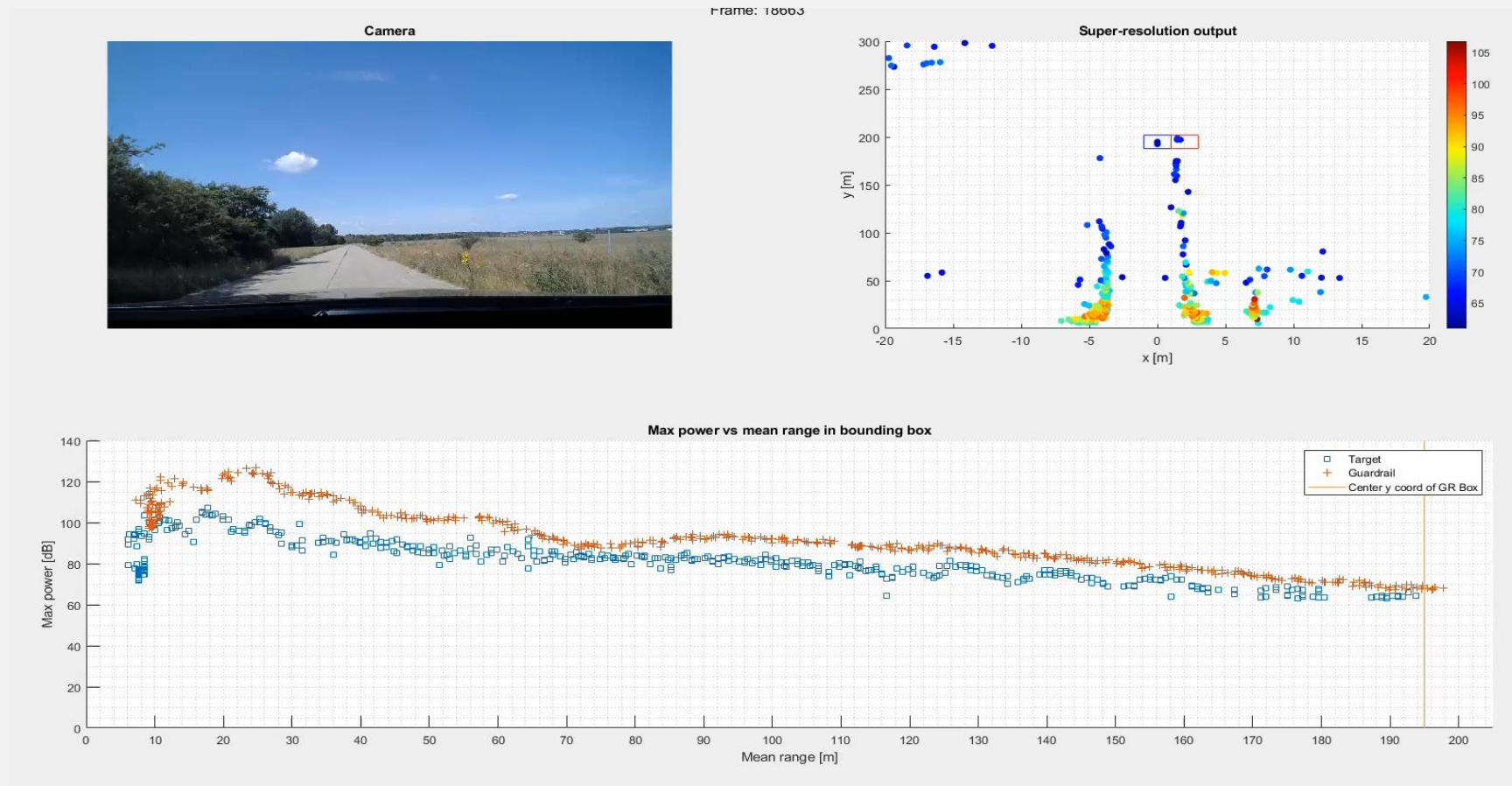
High resolution  
across all dimensions



Radar processing only; no additional sensors used

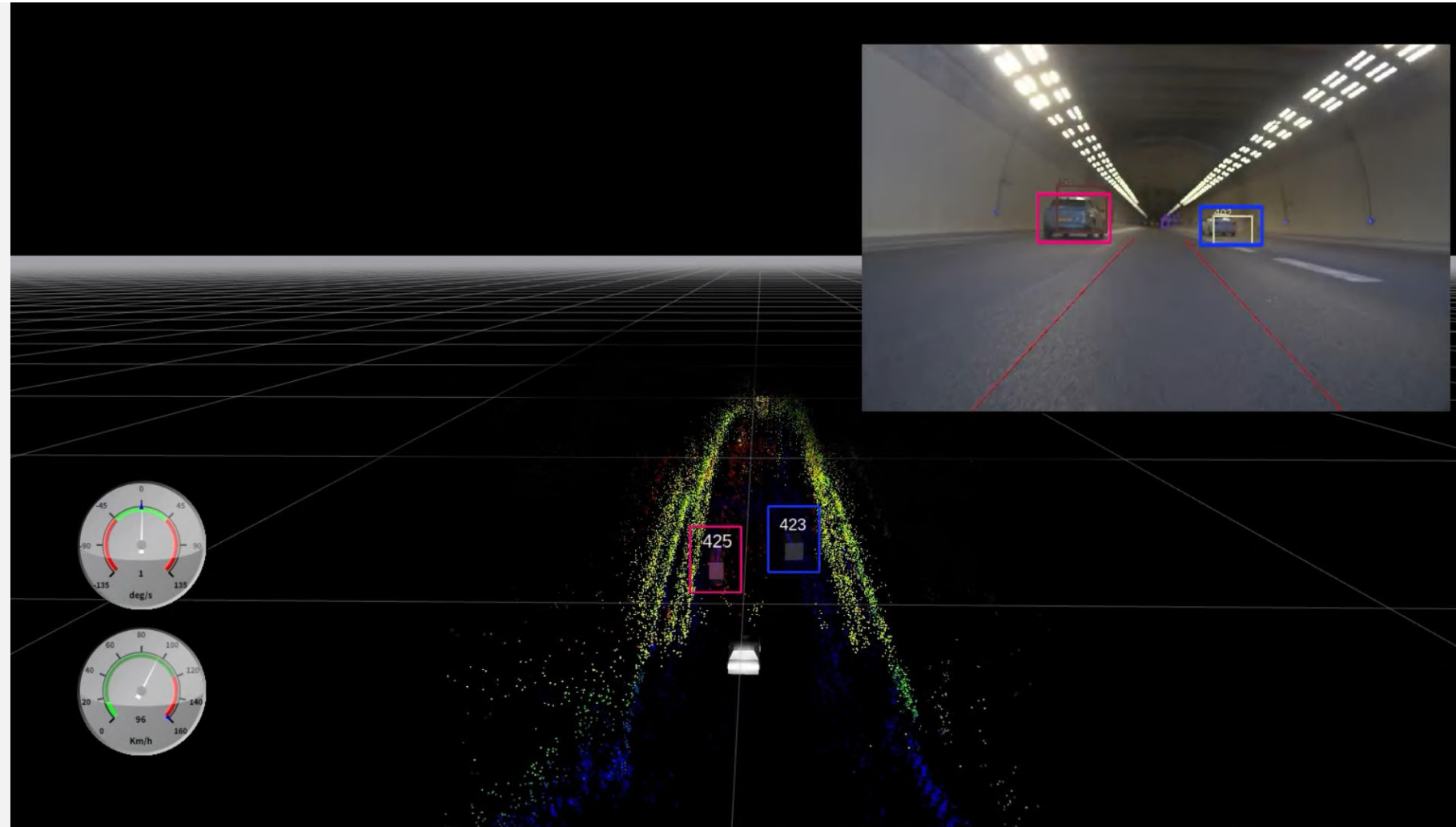
# Use Case: Lost Cargo

- **Lost Cargo**
- Tunnel
- Stationary road construction
- Challenging weather



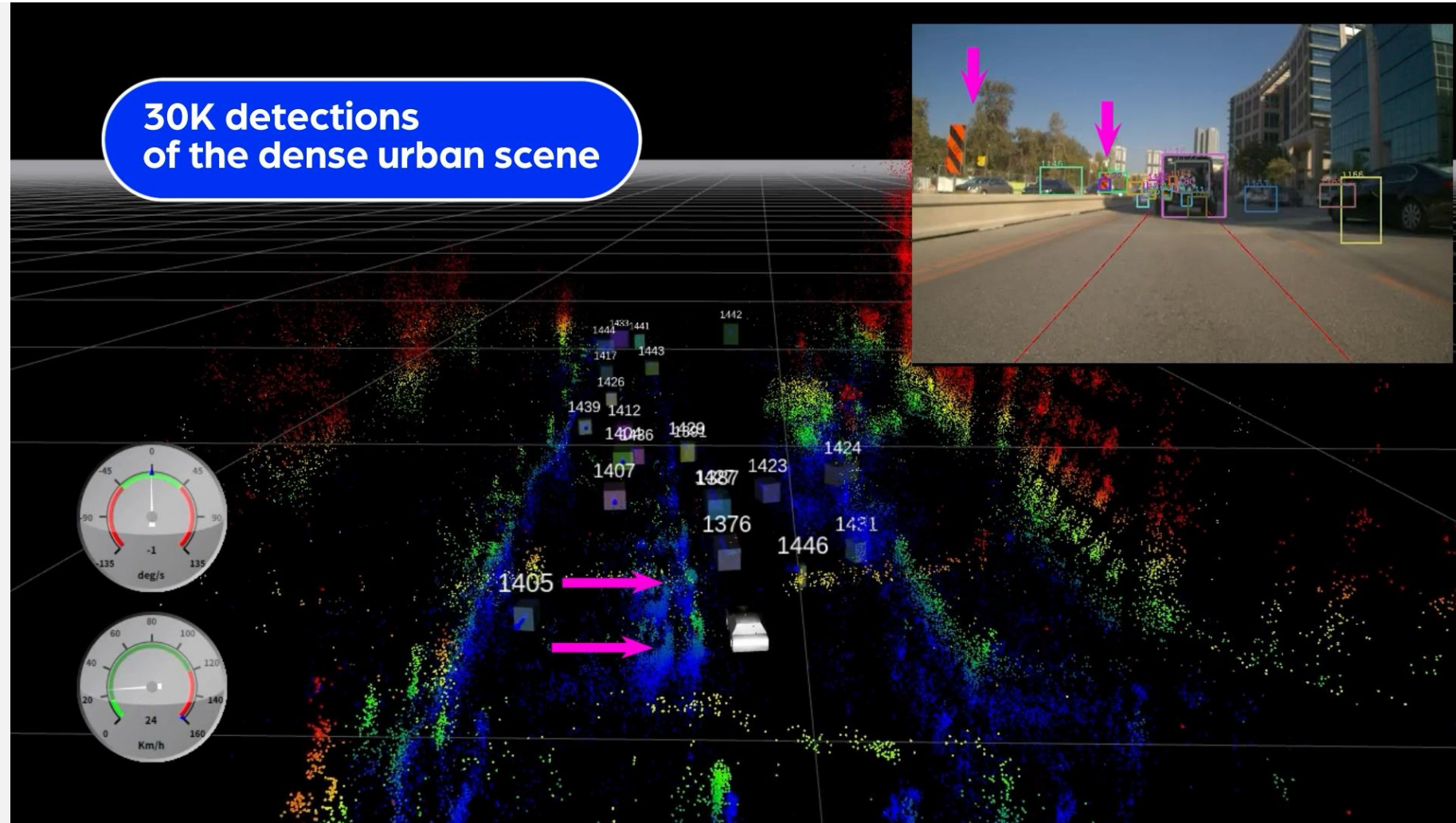
# Use Case: Tunnel

- Lost cargo
- **Tunnel**
- Stationary road construction
- Challenging weather



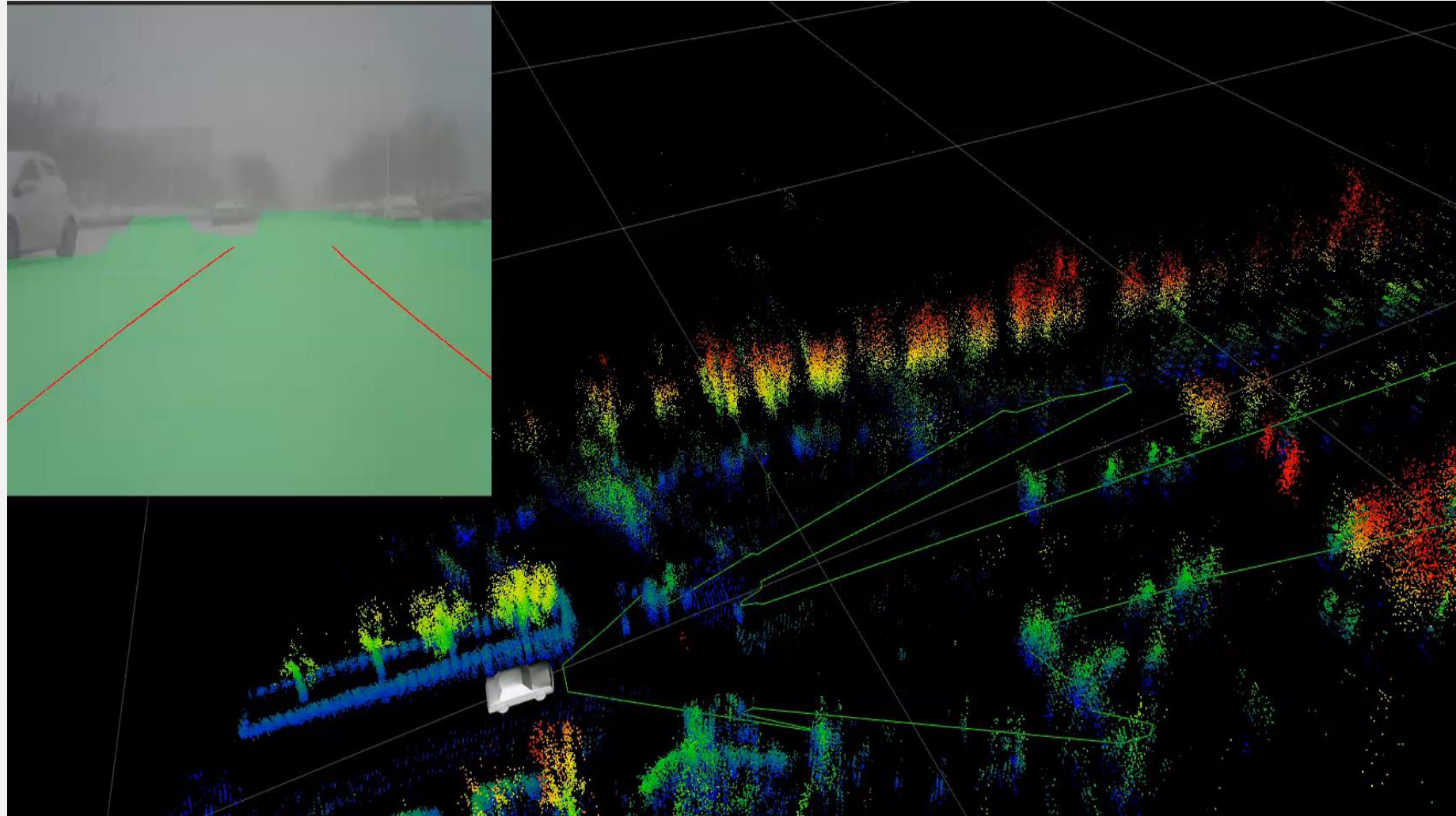
# Use Case: Stationary Road Construction

- Lost Cargo
- Tunnel
- **Stationary road construction**
- Challenging weather



# Use Case: Challenging Weather

- Lost Cargo
- Tunnel
- Stationary road construction
- **Challenging weather**



# The Benefits

1

## Radar Performance: L2+ and Higher Use Cases

- NHTSA compliance
- Obstacle detection at long range
- Pedestrian detection
- Separation
- Any weather and light condition

2

## Independent Source for Free Space Mapping (L2-L5)

- Requires accurate **mapping** of stationary surroundings
- Must have good elevation separation as well

3

## Rich Data for Fusion with Cameras

- High-quality, **high-density** data
- Enhancing safety and autonomous driving at the fusion level

# arbe

Radar Revolution. Delivered.

---

## Thank You!

[Kobi.m@arberobotics.com](mailto:Kobi.m@arberobotics.com)

