

09 / 10
SEPT. 2025

DETROIT LAUREL MANOR,
LIVONIA, MICHIGAN

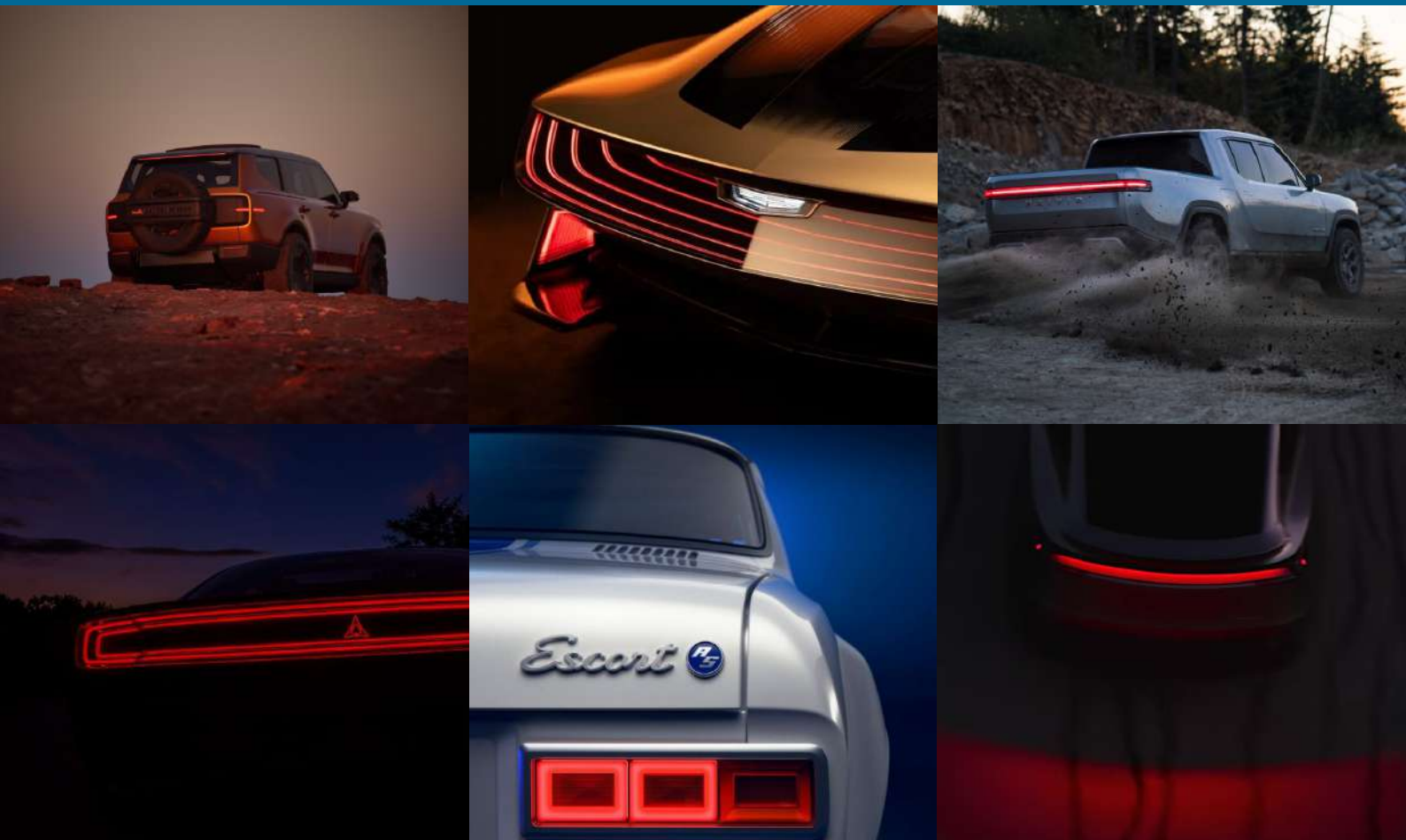


DVN US WORKSHOP

SOCIAL COCKTAIL & DINNER – CONFERENCE – EXPO – DEMO DRIVES – PANEL DISCUSSION – NETWORKING

36TH DVN
WORKSHOP

LIGHTING INNOVATION TO
ELEVATE SAFETY AND STYLE



Valeo MAGNA MARELLI SL Corporation

LUXIT ATALA by OLEDWorks JW SPEAKER SWAROVSKI amint OSRAM TOSHIBA Raffar Brighttek DIODE DYNAMICS idemitsu TYE
NISSHA Infineon covestro AG OPTICS ASYST Flow Dry UVR United Visual DesiKhan HJ optic HESIEN LUMISSIL EVERLIGHT
GYS ANALOG DEVICES inova TACTOTEK MPLD TechnoTeam LMT X2F VUEREAL SYNOPSIS DBM REFLEX DAJAC Ansys Luminit

Wow – it's hard to believe it's already been 2 years since I joined DVN!

Just one week in, I was already on a plane to California for our DVN San Francisco event at the end of August 2023.

As we look back on these past 2 years, we feel truly grateful for the incredible support, passion, and innovation that define our automotive lighting community.

We want to take a moment to say a heartfelt **THANK YOU** to each of you. Whether you've joined us as a community member, exhibitor, speaker, or attendee, your presence and engagement are what make this community thrive.

To our amazing exhibitors: your creativity and groundbreaking innovations continue to drive this industry forward. Seeing your technologies and ideas come to life is always inspiring.

To everyone who participated: your energy, your discussions, and the connections you build are what make this community so special. This is more than just an industry – it's a family, and we're honored to have you as part of it.

Together with Geoffrey, Daniel, Felipe, and the entire DVN team, this past year has been an exciting journey, and we are proud of what we have accomplished side by side. Most importantly, we hope you enjoyed it as much as we did – leaving with fresh ideas, new collaborations, and maybe even a few unforgettable memories.

Our North American community has grown rapidly over these past 2 years, and we are thrilled to be back in Livonia for the second year in a row. Looking ahead, your expertise, participation, and passion will be key to navigating the road before us.

If you have any feedback or suggestions for the next edition, we'd love to hear them. Enjoy our DVN US event – and keep shining bright!

A handwritten signature in blue ink, appearing to read "pammum", written in a cursive style.

Paul-Henri Matha

DVN Chief Executive Officer and Lighting General Editor

PROGRAM

SEPTEMBER 8 & 9, 2025



SEPTEMBER 8, 2025

03:30pm to 05:30pm **GLARE FORUM**
Chairman: Daniel Stern, DVN

From 06:00 pm **REGISTRATION & BARBECUE**
(for DVN members only)

DAY 1 • SEPTEMBER 9, 2025

09:00 am **REGISTRATION**

10:00 am **BREAKFAST**

10:30 am KEYNOTE LECTURES

Roland Berger – Falk Meissner, Senior Partner
• *Trends in the Automotive Supplier Landscape*

DVN – Paul Henri Matha, CEO
• *Automotive Lighting Trend, DVN insights*

11:00 am EXHIBITORS SPEECH

12:00 am **LUNCH BREAK**

01:30 pm SESSION 1 – INTERIOR LIGHTING

Antolin – Javier Cuadrado, Sales Director – EV's and Commercial Trucks:
• *Seamless Light: Backlit Surfaces to Redefine In-Car Interiors*

FORVIA HELLA – Antonio Pantoja, Vice President Tech Center Lighting:
• *SAPHIR: Lighting the Cockpit of the Future*

Valeo – Kumail Syed, Platform R&D Manager:
• *Interior Lighting in Software-Defined Vehicles*

Preh – Luis Hernandez, Senior Mechanical Design Engineer:
• *Lighting Innovation to Elevate Safety and Style*

Covestro – Mark Torgerson:
• *Advancing Automotive Interior Technologies, Aesthetics & Performance*

Raffar – Mario Lin, Sr. Sales Manager:
• *Optimized Automotive Ambient Lighting*

MD Group – Bruno Machado, CEO:
• *Powering Automotive Interior Lighting by MD Group*

INOVA – Gerhard Nill, Senior Technical Sales Manager:
• *ISELED, The automotive ambient lighting standard*

PNNL – Naomi Miller

Q&A

PROGRAM

SEPTEMBER 9, 2025



03:15 pm

COFFEE BREAK

04:00 pm

SESSION 2 – NEW TECHNOLOGY & APPROACH

Ford – Mike VanBelle, Exterior Lighting Manager:

- *Update from Ford*

Huaju – Jia Zhenqing, Vice President & Project Director:

- *Optical design of projection systems and innovation of optical components*

Sunex – Ingo Foldvari, Director of Business Development:

- *Lens Hybridization for μ LED Headlamps: Balancing Cost, Size, and Optical Performance*

TechnoTeam – Bradley Mucha, Application Engineer:

- *Photometric tools to help convey your message with light*

Oledworks – Dr. Michael Boroson, CTO:

- *Bendable OLED: Shaping New Opportunities for Automotive Lighting*

Sabic – Michael Angelo Osero, Americas Marketing Leader:

- *Innovative material development for light shielding*

Schott – Christiane Gallo, Manager Applications & Logistic Services:

- *Enhancing Automotive Lighting: Exploring the Benefits of BORO FLOAT® 33*

Synopsys – Thomas Tessnow, Sr. Applications Engineer & Julien Goechnahts, Staff Application Engineer:

- *Modern Microstructure Design*

United Visual Researchers – Thomas Labardens, Sales Directors:

- *Streamlining Lighting Design Collaboration with Predict Suite's API*

Llink Technologies – Chelsea Jensen, Business Operations Manager:

- *Advanced Remanufacturing for Modern Lighting: Where Innovation Meets Responsibility*

Magwerks – Michael Pickholz, CEO/CTO:

- *Innovative Headlamp Optical System and Construction*

Brightview Technologies – Jennifer Aspell, CEO

- *Novel Automotive Lighting Solutions Using Computational Optics*

DAJAC – Steve Trent, Director of Sales and Marketing

- *From Vision to Validation: One Test at a Time*

NanoVents – Jiří Schirl, Business Development manager, R&D:

- *PFAS-Free Vents Innovation: Advanced Adjustable Multilayer Nanomembrane Solutions for a Sustainable Future*

Q&A

06:30 pm

COCKTAIL

07:30 pm

DINNER

PROGRAM

SEPTEMBER 10, 2025



DAY 2 • SEPTEMBER 10, 2025

08:45 am

KEYNOTE LECTURE – S&P Global Mobility – Tanya Chantiri, Sr Research & Forecast Analyst:
• *Illuminating the Future: Market Dynamics and Data Insights in Interior and Exterior Lighting*

09:00 am

SESSION 3 – REGULATION

Chairman: Bart Teburg – GTB Vice President & Chairman of SAE International Cooperation Committee

Mercedes-Benz – Nik Sciortino, Integral Safety, US Regulatory Affairs:
• *Mercedes-Benz ADS Marker Light Questionnaire and On-Road Study*

GM – Michael Larsen, Technical Fellow, Automotive Lighting; Chairman, SAE Lighting Systems Group:
• *Introduction – Standards Development Program in Lighting Systems Group*

Stellantis – Dennis Novack, Technical Fellow, Exterior Lighting Engineering:
• *Status Report of SAE J3283™ Exterior Lighting Use During the Park Condition of a Vehicle Task Force and SAE J3098™ Front Decorative Lamp*

Sapphire Technical Solutions – Michael Piscitelli, CEO; Vice-Chairman of SAE International Cooperation Committee:
• *ADB Measurement*

North American Lighting – Romeo Samoy, Regulations & IP – Manager; Chairman, SAE Signaling and Marking Devices Standards Committee, Chairman, International Lighting Standards Advisory Group:
• *Status report SAE J3134™ Recommended Practice Automated Driving System (ADS) Marker Lamps*

Valeo – Mark Verplank, Operations Regulations Manager; Chairman, SAE J3308™ Road Projection Lighting Task Force:
• *SAE J3308™ – Driver Assistance Projections (DAP) & Signaling Road Projections (SRP) Overview*

GTB – Bart Teburg, GTB Vice President & Chairman of SAE International Cooperation Committee

Q&A moderated by Bart Teburg – GTB Vice President & Chairman of SAE International Cooperation Committee

Closure: Bart Teburg, GTB Vice President & Chairman of SAE International Cooperation Committee

PROGRAM

SEPTEMBER 10, 2025



10:00 am

COFFEE BREAK

10:30 am

SESSION 4 – EE ARCHITECTURE

Infineon – Nestor Bazan-Cabera, Sr. Manager for LED lighting solutions:

- *How Infineon’s smart LED drivers enable software-less architectures in automotive lighting*

Brightek – Dr David Chen, Director of Business Development:

- *A Smart Lighting Solution for MCU-Less Automotive Systems*

Analog Devices – Ron Ocampo, Staff Engineer – Product Applications:

- *Evolving Architectures of Headlamps in SDV*

Microchip – Sven Semmler, Principal Field Applications Engineer:

- *Lighting the Edge: Strategies in Software-Defined Vehicles*

ams OSRAM – Lufei Shen, Product Manager:

- *Open System Protocol drivers to bring exterior lighting to life*

Lumissil – Aaron Reynoso, Director of Analog Products:

- *Intelligent Signal Displays & Communication Lighting: Communicating Safety and Style Through Automotive Lighting*

Round Table moderated by Paul Henri Matha, DVN CEO

Infineon – Nestor Bazan-Cabera, Sr. Manager for LED lighting solutions

Brightek – Dr David Chen, Director of Business Development

Analog Devices – Ron Ocampo, Staff Engineer – Product Applications

Microchip – Sven Semmler, Principal Field Applications Engineer

ams OSRAM – Lufei Shen, Product Manager

Lumissil – Aaron Reynoso, Director of Analog Products

Ford – Mike VanBelle, Exterior Lighting Manager

12:00 pm

LUNCH BREAK

PROGRAM

SEPTEMBER 10, 2025



01:15 pm

SESSION 5 – LIGHTING AND SAFETY

GM – Jodi Allen, Technical Specialist – Headlamp Ratings and Optics

Rivian – Carlos Montes Relanzon, Senior Manager, Lighting Systems, Product Development:

- *Rivian ADB fist to US market*

Marelli – Colby Childress, Optical Manager:

- *Infrared support for future AEB systems*

Ansys – Victor Loya, Lead Application Engineer:

- *Virtual Prototypes for Appearance Validation of Lighting*

ams OSRAM – Joe Jablonski, Senior Applications Engineer:

- *Freedom of choice in ADB resolution: EVIYOS Flex and the new OSLOX PX*

OPmobility – Shammika Wickramasinghe, Head of Innovation Americas:

- *FMVSS ADB*

Lumileds – Joe Cho, North America Product Marketing Manager:

- *Customized modular solutions for full Headlighting & ADB solutions, accelerating US market adoption*

Toyota – Chris Grant, Sr. Engineering Manager and Sunil Dalal, Principal Engineer:

- *Improving Headlight Illumination for Customer Satisfaction, Utilizing In-House Night Drive Simulator*

J.W. Speaker – Dr. David Frailey, Research & Development Lead:

- *Ultra Slim μ LED Dual Matrix Module*

Valeo – Graham Cassel & Brant Potter, Senior Expert – Lighting:

- *Near Field Projection: Enhanced Safety or a Gadget*

Q&A

03:05 pm

COFFEE BREAK

PROGRAM

SEPTEMBER 10, 2025



03:30 pm

SESSION 6 – CAR BODY LIGHTING

Tactotek – Dominique Heilborn, Director Automotive:

- *Slim, Smart, and Efficient: Lighting up Emblems with IMSE®*

Nissha – Yuta Nakame, Sales Director:

- *Lumistyle for Inner Lens*

Luminit – Jonathan Waldern, Chief Executive & Technical Officer:

- *Visible Light Communication (VLC) and other Automotive Applications using Holographic Optically Illuminated Displays*

SL America – Felix Urbina, Managing Director:

- *Kia EV9 and Cadillac Celestiq car body lighting*

Magna – Edward Bailey, Manager LED Technology:

- *Optically Efficient Hidden Until Lit Solution*

Swarovski – Markus Baumann, Head of Sales & Quality Management:

- *Driving Brilliance: The Role of Crystal in Future Mobility*

FORVIA HELLA – Eoin Ryan, Head of Predevelopment:

- *SAPHIR: Sustainable Exterior Lighting Innovations*

Scout Motors – Luciano Lukacs, Manager, Body Exterior Vision System

Q&A

05:20 pm

CLOSING

EXHIBITION FLOOR PLAN

TYPE OF EXHIBITORS BOOTH

XXL

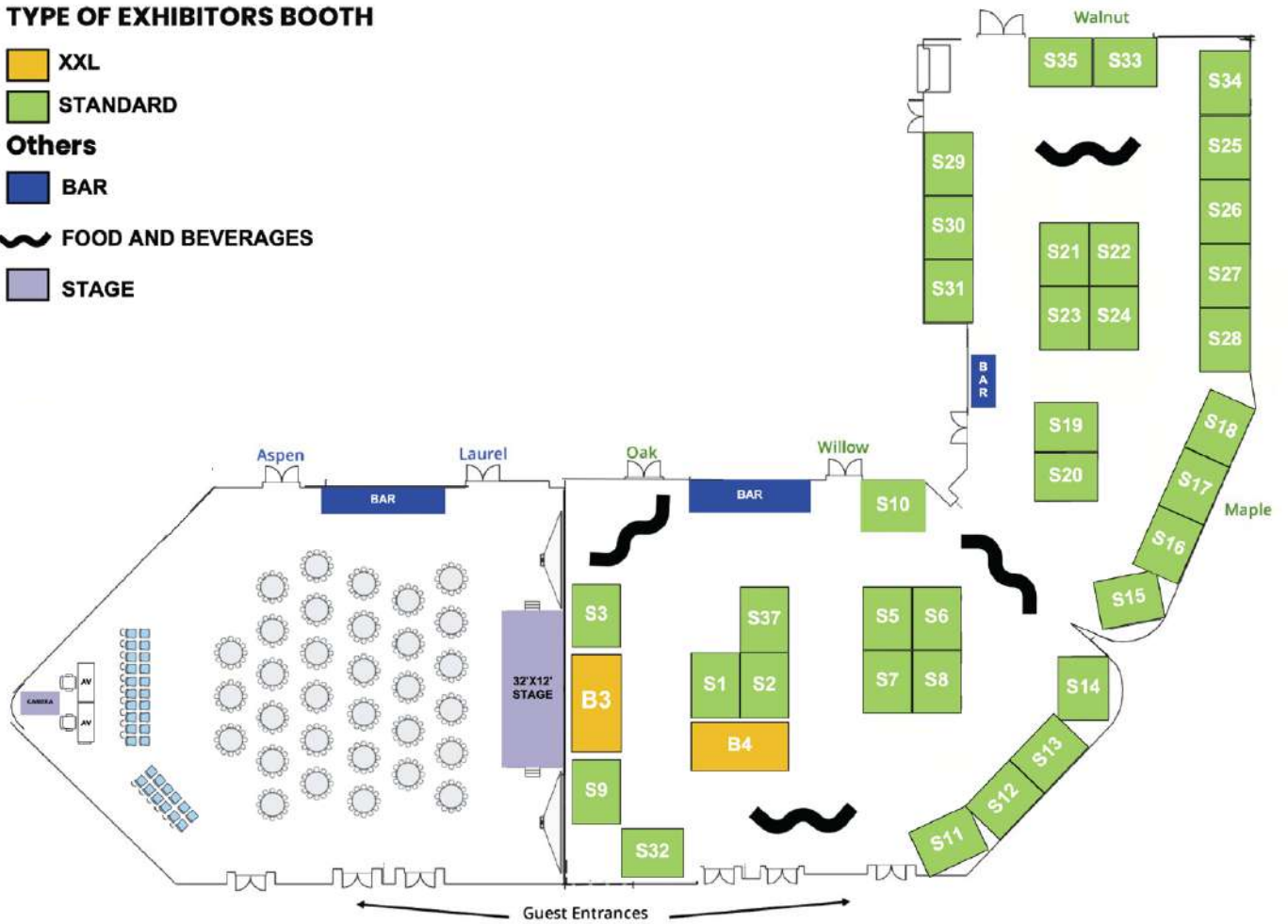
STANDARD

Others

BAR

FOOD AND BEVERAGES

STAGE

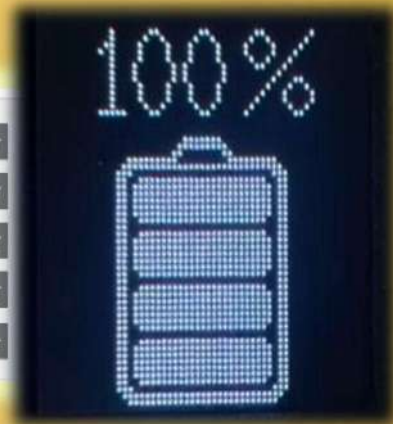
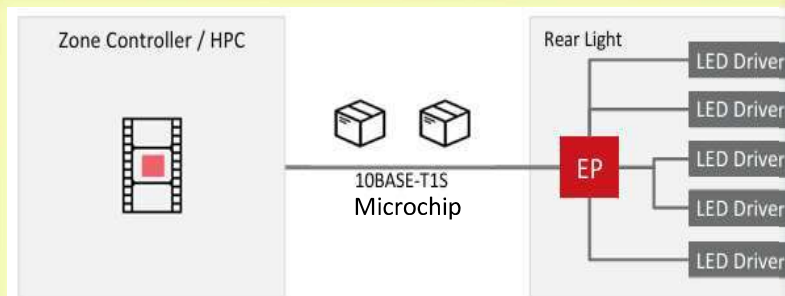


S1 RAFFAR	S10 DESIKHAN	S17 GVS	S25 HESIEN + SYNOPSISYS	S33 DIODE DYNAMIC
S2 DBM REFLEX	S11 MARELLI	S18 MAGNA	S26 UVR + X2F	S34 SL CORPORATION
S3 INOVA + VUEREAL	S12 NISSHA	S19 EVERLIGHT	S27 ANALOG DEVICES	S35 MPLD
S5 LUXIT	S13 INFINEON	S20 LUMISSIL	S28 TECHNO TEAM + LMT	S37 TYC AMERICA
S6 BRIGHTTEK	S14 ASYSTECH	S21 TOSHIBA	S29 LUMINIT	B3 VALEO
S7 HUAJU	S15 SWAROVSKI MOBILITY	S22 FLOWDRY	S30 DAJAC	B4 AMS OSRAM
S8 OLEDWORKS	S16 ANSYS	S23 AG OPTICS	S31 JWSPEAKER	
S9 COVESTRO		S24 TACTOTEK	S32 IDEMITSU	

Optical and Automotive Signal Data Control Innovator



RT7216NQ
Dot & Line Solution



RT5648Q
Matrix Display



Sculpting Light to Awaken the Senses

Worldwide Supplier of High-Precision Inserts and Injection-Molded Optics



**MICROREFLEX
NEW**



MICROCONES

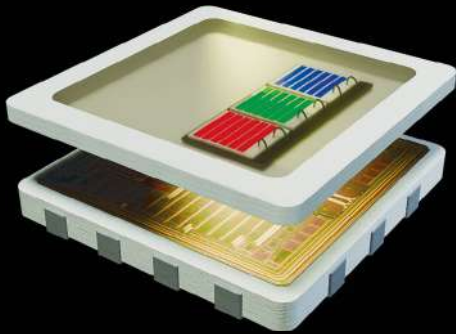


TEXILIT™



Visit us at Booth S2

DBM REFLEX®



The Smart LED Technology

Highly integrated IC and LED.

Daisy-Chaining of up to 4079 ISELEDs at highest speed.

Pre-calibrated LEDs by manufacturer with bi-directional communication & diagnostics.

Plug 'n' Play - Expandable single architecture for functional, ambient & direct lighting.

Enhanced performance: ISELED 2.0



The Light and Sensor Network

Centralised single point of control with no SW in subsystems – no calibration nor temperature compensation algorithm in SW.

Easy synchronization of light scenarios, enabling simplified Over-the-Air updates at no additional cost.

On chip DC/DC control in INLT220Q & ILaS RGB LEDs.

Reduction of weight and harness with max. features at lowest system cost.

The ISELED Ecosystem with +200 devices offers total freedom of choice and reduces supply chain risks.

With contributions from Analog Devices, Microchip, NXP, Renesas, Autochips, YTMicro, Bluewhale, Zhixin, CoAsia, Dominant, Everlight, Harvatek, Lextar and Liteon



VUEREAL

VueReal is a global leader in micropixel technology, revolutionizing MicroLED and microdevice production through its proprietary MicroSolid Printing™ platform



World's First MicroLED References Design Kits

Accelerate Your Development!



Made with VueReal's MicroSolid Printing™
technology

LUXIT

LIGHTING INNOVATION + TECHNOLOGY

LUXIT Group understands the crucial role lighting plays in the various aspects of vehicle styling, safety, and V2X communications. As experts in the field, we offer a wide range of lighting solutions, specializing in small lamps, auxiliary lighting, and interior lighting applications. Our global presence and unique vertical integration allows us to serve as an ideal partner in the vehicle lighting industry.



SUSTAINABLE PRODUCTS

VERTICAL INTEGRATION

ADVANCED TECHNOLOGY

SAFER ROADS

FASTER TIME TO MARKET

INNOVATIVE DESIGN

COMPETITIVE ADVANTAGE

www.LUXITGroup.com

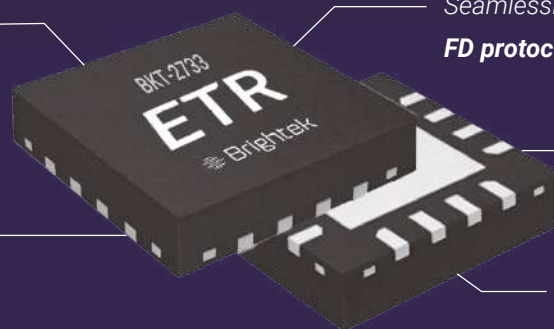


MCU-less Innovation for Automotive Lighting

Smarter Approach. Simplified Connections. Enhanced Efficiency

Single SPI port control for up to **62** light modules.

Lookup table support for temperature compensation and failure shutdown.



Smart Transceiver

Seamlessly bridges **SPI, I2C, and CAN FD protocols** for effortless integration.

CAN FD supports **> 10 meters** transmission for reliable signals.

Broadcast function for commands and reports.

DVN Lighting Workshop

Speech Topic: A Smart Lighting Solution for MCU-Less Automotive Systems



Follow up on our socials.

Visit Us at
Brighttek.com

 **Brighttek**



Zhejiang Huaju Optoelectricity Co., Ltd. Was established in 2020, with 2 factories in China. We are a high-tech enterprise at the forefront of optical innovation. Specializing in the R&D, production, and sales of optical aspherical lenses—from glass aspheric components to HD and DLP projection lenses—we deliver cutting-edge optical solutions across diverse industries. Headquartered in Zhejiang, China, our company operates modern facilities equipped with advanced manufacturing technologies. Backed by a passionate and innovative team, we combine decades of optical expertise with deep technical mastery in glass aspheric lens systems. This commitment to excellence has established us as a technological leader in the field.

Main Products

*Projector



*Optical Aspheric Glass Lens/ Polymer Lens



FLEX

your light design



Visit us in **Booth #S8**
to learn more.

atala.oledworks.com



ATALA

by  **OLEDWorks**



THE MATERIAL EFFECT

Combining material science, process expertise, and application development for breakthrough polycarbonate solutions.

Apec[®]
Bayblend[®]
Makroblend[®]
Makrolon[®]

*also available in R,
RE and RP grades



Imagio[®] Optical
Material Data





Visit
us at our
booth

Innovative Lighting Technologies

MARELLI

24 hours daylight

Marelli Lighting is one of the worldwide leading vendors of headlamps, rear lamps and lighting electronics.

Our expertise in intelligent light systems makes us the partner of choice for innovative vehicle lighting and advanced sensor integration to support future ADAS/AD features. With plants in 16 countries on 5 continents we are always close to our customers.



MARELLI.COM

Improving interaction with integration of design and functionality



Trusted solutions for exterior and interior including:

- Rear lamp Inner lens Design w/ functionality
- Exterior Décor film
- Grille / Indium film w/ free wave for ADAS
- HiddenDisplay, icons and graphics
- Wire heater + ADAS wave free material
- AR Solution - High level color matching between plastic bezel and center display



Rear Lamp Inner Lens



HiddenDisplay



AR Solution
High level color matching between plastic bezel and display



Embedded Heater

Turning Mobility into the Future of Living Spaces



SAFETY



COMFORT



SUSTAINABILITY

For more detailed application insights, manufacturing capabilities and contact information

Website



Nissha Europe GmbH
@Frankfurt, Germany (Sales/Design)
Nissha USA
@Northville, MI (Sales/Design)
Nissha Co., Ltd.
@Kyoto, Japan (Global head quarter)

Global Manufacturing Network



SWAROVSKI

Mobility



Crystal
meets light.
Emotion
meets
innovation.

Swarovski Mobility redefines automotive lighting
with crystal-driven brilliance and precision.
Design with depth. Shine with purpose.

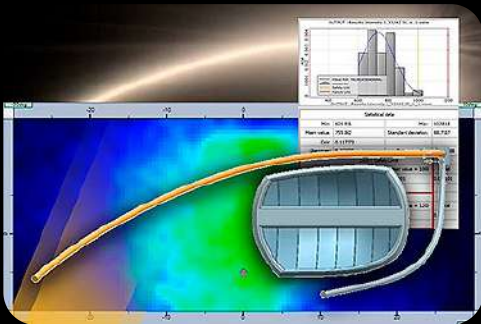
swarovski-mobility.com



Smarter Lighting Starts with Smaller Design

Accelerate Innovation in Automotive Lighting with Ansys Optics

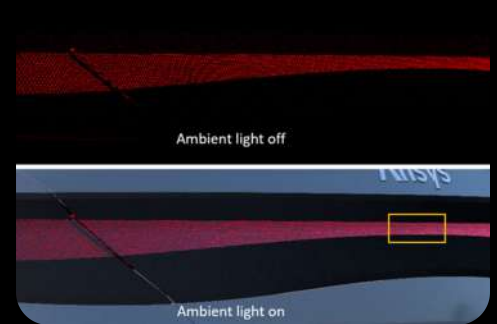
Design



Simulate



Validate



From first concept to final validation, Ansys Optics delivers the advanced simulation capabilities automotive teams need to innovate with confidence.

- Accurately simulate light propagation and ray tracing
 - Optimize color, intensity, and optical performance
 - Reduce physical prototypes with virtual validation
- Integrate with structural, thermal, and electromagnetic tools for full-system insight
 - Analyze optical materials and surface interactions

**Request Your
Free Trial Today!**



Adhesive venting patch



[more information](#)

Description

GVS adhesive ventilation patches are designed to protect electronic and electric assembly components from contaminants like water, particles, dust, oil, and other automotive fluids.

The patches allow air to pass freely through the filter media by providing enhanced condensation reduction and pressure equalization within enclosures that are often exposed to rapid temperature fluctuations that cause extreme changes in internal pressure.

Beyond the standard options, customized membranes, formats and dimensions are available upon request

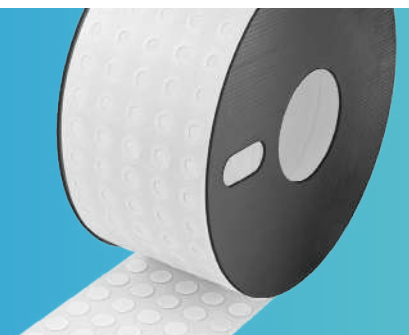
Applications

- Vehicles Lighting Systems
- Electronic Control Units (ECUs)
- Sensors and Actuators
- Horns
- Dashboard and HMI Panels
- Other Electrical and Electronic devices

Features

- Degrees of protection IPX7-IP6KX
- Thermal test according to ISO 16750-4
- Oleophobic treatment according to AATCC 118 Standard Test Method
- Compatible with water, automotive fluids, and road contaminants

Single-row and multi-row roll options are available to fit different assembly processes



The above information is for reference only with the sole purpose to define the best fitting product for the user's application. The use of GVS products in specific applications may give varying results, according to the specific conditions and applications. GVS assumes no responsibility for damages resulting from the incorrect use of its products.



Lighting the Path to Innovation, Safety & Styling

Magna is a leader in advanced automotive lighting technology, delivering innovative solutions that enhance safety, performance, and design. With deep expertise in micro and mini LED technology, we create sleek, energy-efficient lighting systems that push the boundaries of styling and functionality. Our solutions support the latest safety regulations, including FMVSS-compliant Adaptive Driving Beams (ADB), which intelligently adjust light distribution to maximize driver visibility without blinding oncoming traffic.

At Magna, we're shaping the future of mobility through smart, sustainable, and stylish lighting innovations.



Learn more about our
Lighting technology at
magna.com

EVERLIGHT

— AUTOMOTIVE



www.everlight.com



ARRIVAL IN 5 MINUTES

Interactive Signal Displays

Interior and Exterior Communication Lighting for Autonomous Vehicles

Our products:

- ▲ High Brightness LED Drivers
- ▲ FXLED - RGB LED Drivers
- ▲ Smart RGB LED Drivers LIN/CAN
- ▲ MCU/Touch Key Sensor/MPUs
- ▲ Power Management

Certifications:

- ▲ ISO 26262
- ▲ AEC-Q100
- ▲ LIN 2.2



▲ WE'RE LOCATED AT BOOTH S20



Visit us at
lumissil.com

Follow us on our socials
   @lumissil



TOSHIBA

Light source evolution leads car evolution

**UNECE approved LED bulbs
Standardized for automotive exterior lighting**

LED bulbs allow for design flexibility
and shortened lead times for rear combination lights,
turn signals and other lighting applications.



01 Compact and lightweight
LED chips, circuit and socket are integrated in one body.

02 UNECE approved
Certified by UNECE-R128 and available as standardized light units.

03 Easy installation
The same twist and lock attachment as ordinary bulbs allows for easy assembly.

Toshiba Lighting & Technology Corporation

Automotive Light Source Sales Group, Sales Department, Industrial Device Division

72-34, Horikawa-cho, Saiwai-ku, Kawasaki 212-8585 Japan

TEL : +81-44-576-6198

https://www.tlt.co.jp/tlt/english/products/industrial_light/industrial_light.htm





Flow Dry
Filtration Group®

OptiClear® self-regenerating desiccant that prevents headlamp condensation without the need for replacement, using temperature changes to stay dry.



oxyphen
Filtration Group

Oxyphen Track-Etched PFAS-Free Membranes
Precision venting. PFAS-free.
Proven automotive protection.

Contact us



Flow Dry
Filtration Group

Igor Preseren

Phone 248.974.1535

Web www.flowdry.com

Email igor.preseren@filtrationgroup.com



oxyphen
Filtration Group

Roy Andersen

Phone 404.903.1463

Web www.oxyphen.com

Email roy.andersen@filtrationgroup.com

Company Introduction

We specialize in the design and mass production of high-quality optical lenses for automotive applications. Our expertise includes advanced solutions for automotive headlights, ADAS cameras, Micro LED and dynamic ground projections (DGP). We are committed to providing innovative and precise optical products that meet the highest industry standards.

Application and Business Area



01 Glass Aspherical Lens

- VISIBLE OPTICS
- IR OPTICS
- GLASS LENS
- Fish Eye Lens
- Anamorphic Lens



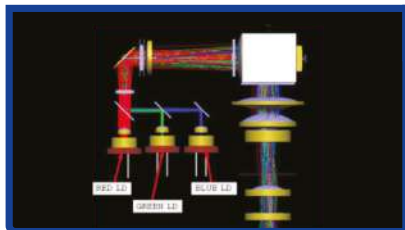
02 Plastic Aspherical Lens

- Fly Eye Lens
- Anamorphic Lens
- Cylindrical Lens
- HUD (Head Up Display): PGU Optics
- Freeform concave mirror
- LIDAR optics
- Projection Lens for Head light
- Fresnel, DOE, F-theta



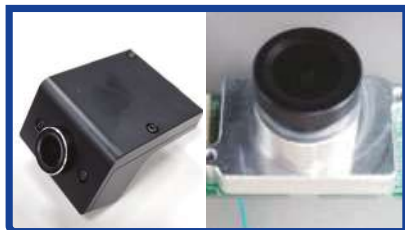
03 Lens Assembly

- AUTOMOTIVE LENS
- IR CAMERA LENS
- SPORTS CAMERA LENS
- FISHEYE LENS
- SECURITY & SURVEILLANCE LENS



04 Optical Engine (DISPLAY OPTIC)

- Capable of customizing optical system upon customers' request
- Projection Engine including LCD, DMD, LCOS for AR HMD, HUD, LIDAR



05 Lens and optics, custom cameras and lighting modules

- ADAS Lens & camera module for Automotive
- ADAS / Dashcam / Industrial cam (12M)
- Custom cameras and lighting module

TACTOTEK

Light Up Your Brand

Bring efficient, dynamic lighting to ultra-thin, seamless surfaces with IMSE®



www.tactotek.com

Let Light Live™

Now in USA – New Detroit Office
For Life

Ask About Our Complimentary Project Kick Off Package*
No Cost, No Commitment

NEW TECHNOLOGY:
**AUTONOMOUS
EXPRESSIONS™**
+
**Mechanical
Transformation
Systems™**



Courtesy: Aumemats Vehicle Company

BRINGING CARS TO LIFE

Through a contextually aware AI-driven DCU and integrated components – to enable expression, engagement, and adaptive behavior that responds to people and environment

PATENTS PENDING

FULL PRODUCT OFFERINGS



Exterior

Interior

- Functional Lighting**
- Cabin/Overhead Console Lamps (Capacitive Touch)
 - Glovebox Lamp
 - Boot/Trunk Lamp
 - Vanity Mirror Lamps

- Courtesy Lighting**
- Footwell Lighting
 - Door Courtesy Lamps
 - Scuff Plate Lighting

- Ambient Lighting**
- Multi-Zone RGB Lighting
 - Cupholder Illumination
 - Console Illumination
 - Door/Handle Illumination
 - Seatback & Floor Lighting
 - Roof Lighting

- Systems of Systems**
- Cross - Domain Synchronization & Integration
 - Animated Sequences
 - State based Activation



Design • Simulation • Analysis for Automotive Lighting Applications

LucidShape

Design solutions for exterior automotive lighting

LucidShape CAA V5 Based

CATIA-integrated optical design and analysis

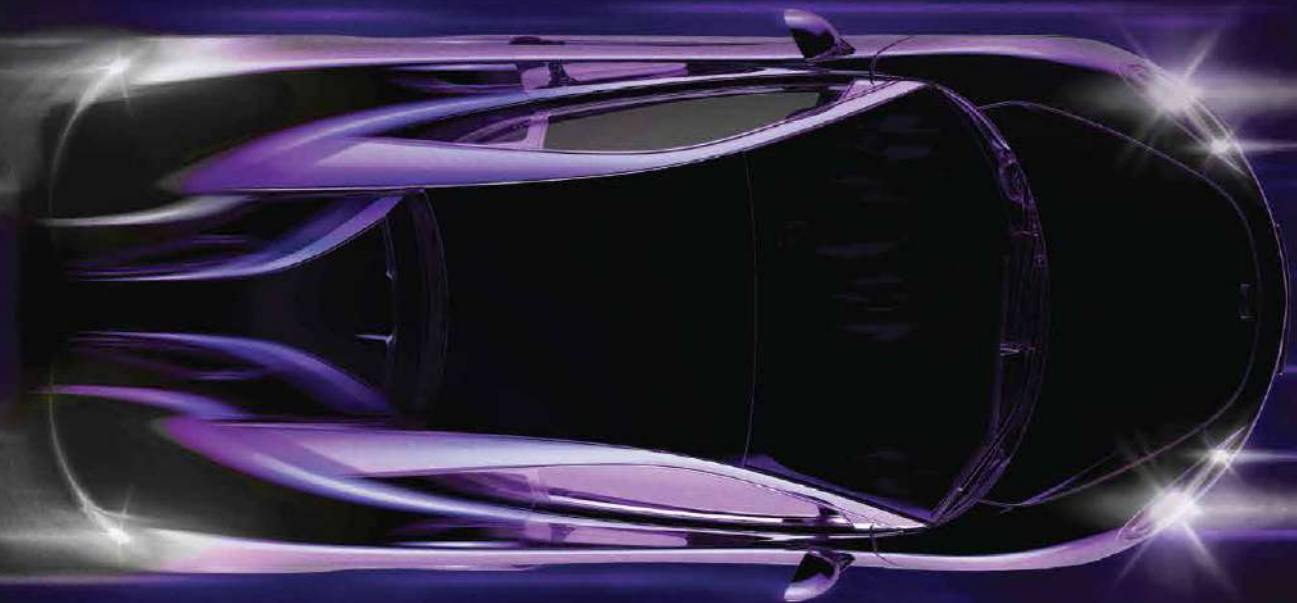
LucidDrive

Virtual reality night drive simulations

LightTools

Design solutions for interior automotive lighting

For more information, visit:
synopsys.com/optical-solutions





AVAILABLE IN
 Unity  UNREAL
ENGINE



PREDICT MATTER

Predict Matter enables you to import, edit or create physically measured material and light data. Predict Matter is fully interoperable providing users with a consistent and powerful 3D assets library.



PREDICT ENGINE

Predict Engine is a compelling computer-aided appearance design renderer for validation and decision-making and streamlines the whole industrial chain from design, CMF, engineering down to communication.



PREDICT LAB

Predict Lab is a versatile optical analysis tool that enables you to validate light, colors and material interactions. Predict Lab analyses and outputs quantitative data including radiometric and photometric information.



X2F

MOLDING MACHINES

S26

BOOTH

OVERMOLDING YOUR VERY DELICATE PRODUCTS

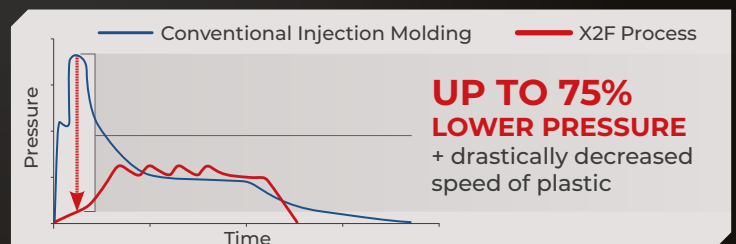
For the first time presented at DVN in US

The groundbreaking "Extreme Low Velocity Injection Molding" technology from X2F (Colorado, US).

This innovation offers numerous possibilities for the automotive (lighting) industry, providing huge cost savings and enabling product designs previously thought impossible.



- Overmolding PCBs with thermal conductive plastic
- Overmolding LEDs + components on foil
- Overmolding sensors instead of potting
- Overmolding PCBs + LED as alternative for diecasted aluminum heatsinks
- Molding high quality polymer lenses with negligible shrinkage and birefringence, always in just one shot



X2F eliminates the traditional extreme pressure peak at the start of the injection molding process.

With up to 75% lower pressure than normal, the plastics enters the mold. The speed of the plastic during molding is correspondingly lower. The process is called **CVM (Controlled Viscosity Molding)**: a data driven process with a negligible shear of the polymer chains. All commercially available plastics can be used, even plastics with an extreme high rate of fillers or fibers.

NOW, A WHOLE VARIETY OF NEW PRODUCTS CAN BE PRODUCED WITH HIGH COST SAVINGS.



WWW.X2F.COM



Shaping the Future of Automotive Lighting

Analog Devices is redefining automotive lighting with innovative technologies that combine connectivity, power management, and intelligent control. From adaptive driving beams to high density LED displays, ADI delivers solutions that enhance safety, elevate styling, and accelerate the shift to the software-defined vehicle.

- **Automotive Cabin Technology Portfolio:** Industry-leading solutions in data connectivity, audio signal processing, and power management.
- **10BASE-T1S E²B™ RCP Transceivers:** IEEE 802.3-2022 compliant, removing the need for edge MCUs and centralizing software at the central processing unit while ensuring deterministic low latency.
- **Lowest $R_{DS(ON)}$ Matrix Manager & LED Drivers:** Enabling complex lighting animations, adaptive driving beams (ADB), and exterior LED displays.



REDUCED
SIZE



LOWER
COST



DESIGN
RE-USE



LOW
ENERGY



REDUCED
BOOT TIME

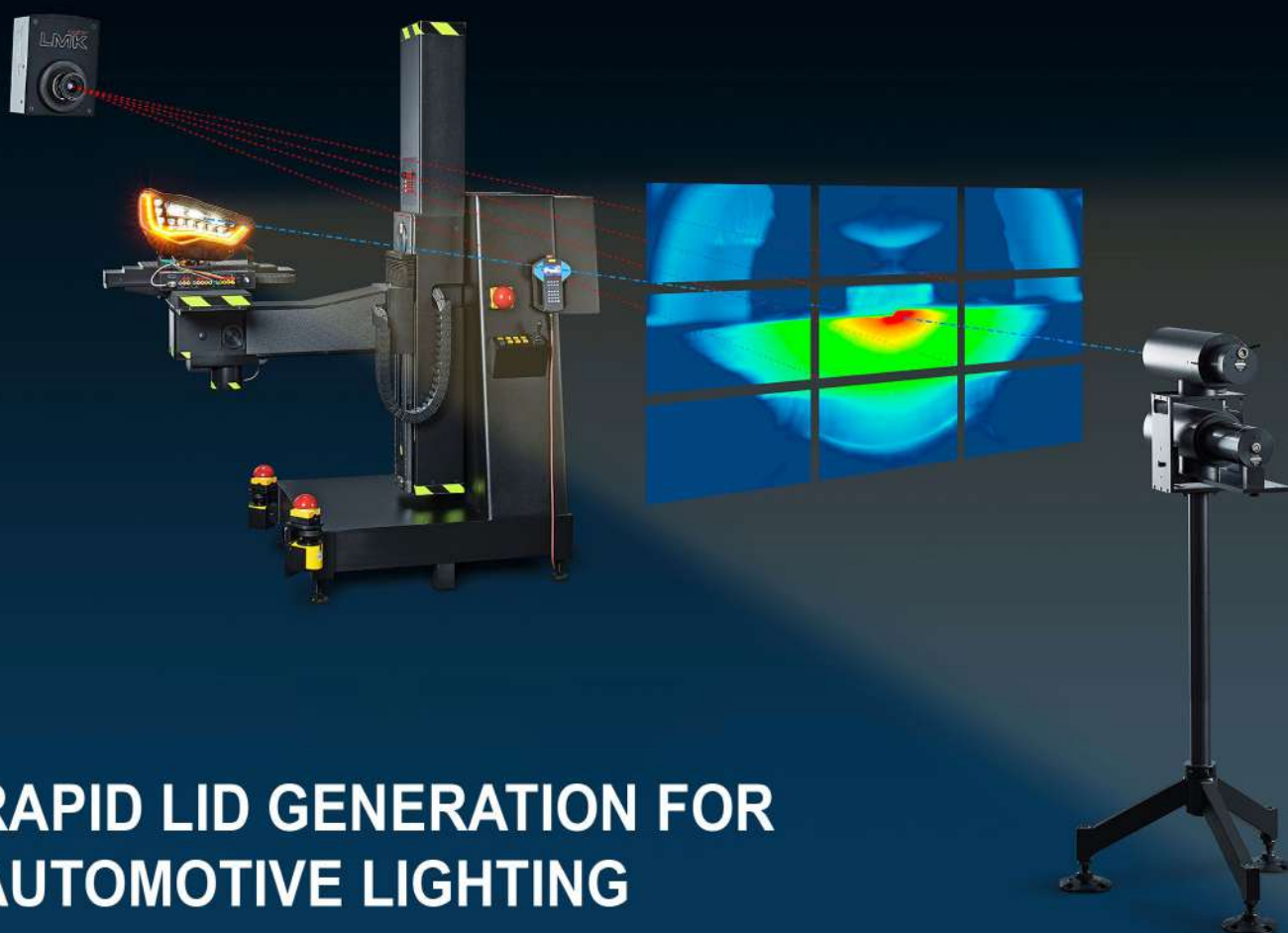


SW
DEV/QUAL

Learn More: analog.com/automotive



BEST OF TWO WORLDS



RAPID LID GENERATION FOR AUTOMOTIVE LIGHTING

LMT and TechnoTeam: Combining the swiftness of digital imaging systems with the accuracy of traditional goniophotometers

Jointly patented technology with more than 100 installations globally



**Transformative
LED Light**



Color Mixing



**Precision Beam
Control**



**Optimized FOV
Displays**

Luminit Light Shaping Solutions Include



Thin Film

Patented diffusers that shape light for high-efficiency LED use.



Rigid Sheets

Engineered sheets deliver superior diffusion for structured light control.



Glass-on-Glass

Durable glass optics for demanding environments and consistent diffusion.



Injection Molded

Cost-effective molded optics with precise beam control for mass production.

DESIGNING LIGHTS. DEFINING LEGACIES.



McLaren P1 LED Headlight

We build lasting legacies. With 90 years of experience, we don't just craft lights, we're your partners in design, turning visions into tangible triumphs.

Together, we navigate regulatory complexity and embrace the speed of modern manufacturing to create LED lighting solutions that are stunning in design, uncompromising in functionality, and American made.

We believe in creating more than just products. We believe in excellence — to delivering on the kind of quality that becomes synonymous with the vehicles you build — enhancing the very identity of your brand for generations to come.

We're not just in the business of lighting — we're in the business of defining legacies.

Learn More:



J.W. SPEAKER
Engineered. Lighting. Solutions.



#jwspeaker

Engineered For Brilliance.

Introducing **TARFLON™** Series and Its
Next Generation LC150A



Experience a New Era of High-Performance
Polycarbonate for Light Guide Optics.

2025 DVN Detroit Lighting Workshop
Booth #S32

DIODE DYNAMICS

MANUFACTURING



Image courtesy Roush Performance
www.roushperformance.com

Your Specialty Solutions Partner

Diode Dynamics has built a reputation in the automotive aftermarket as a manufacturer of innovative, high-performance lighting solutions.

We are pleased to now offer our capabilities to industrial, commercial, Tier 1, and specialty OEM customers. From our vertically-integrated St. Louis, Missouri facility, we design, validate, and manufacture modern lighting components and assemblies.

Whether it's circuit boards, modules, secondary lamps, or auxiliary lighting, we would be glad to provide support on your next project, with excellent time-to-market, high flexibility, and a cost-conscious approach.



KIA EV9



LIT GRILLE

Cadillac ESCALADE



EMBLEM

Cadillac CELESTIQ



DMD



CELESTIQ

<https://www.slworld.com>

SL Corporation
77, Gongdan 6-ro, Jillyangeup, Gyeongsansi, Gyeongsangbukdo,
Republic of Korea

SL_CORP_KR

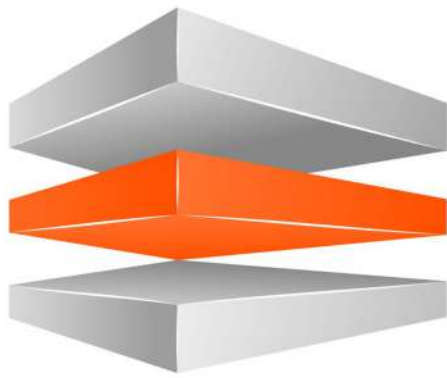
<https://www.sl-america.com/>

SL MICHIGAN
4375 Giddings Rd. Auburn Hills, MI 48326

+1 (586) 731-8511

SL_AMERICA

SL Corporation



MPLD

T E S T E Q U I P M E N T

WE OFFER YOU ALL THE **SKILLS AND EXPERIENCE**
NEEDED TO OPTIMISE YOUR **TEST SETUPS**



VIBRATION FIXTURE
WATERTIGHT SUPPORT
PULSATION

VIBRATION FIXTURE
PHOTOMETRIC SUPPORT
RAIN TEST FIXTURE



VIBRATION FIXTURE
THERMAL TEST FIXTURE
SQUEAK & RATTLE FIXTURE

Your partner for **designing** and **manufacturing** of fixtures for
vibration testing and **technological supports** for **quality testing**.

VIBRATION FIXTURES

TEST EQUIPMENT

MPLD.IT



TYE®
AMERICAS

**Your Partner in
Mobility Solutions**

 tycamerikas.com



LIGHTING EVERYWHERE

**Innovative exterior and interior lighting systems
for Safety, Style, Performance & Sustainability**

Visit www.valeo.com to discover our latest innovations

SMART TECHNOLOGY FOR SMARTER MOBILITY

ams **OSRAM**

100 Years of Lighting the Way

During our 100 years in automotive lighting, we've seen it all. Long hauls and late nights. Road trips and school runs. City commutes and off-road.

On every journey, we've been there. Helping you navigate those unexpected twists and turns with the highest quality products that are transforming mobility.

Our full portfolio of integrated lighting and sensing technologies — from top-performing LEDs and lasers to cutting-edge sensors — are helping create smarter, safer, and more sophisticated vehicles.

ams-osram.com





Geoffrey Lebrun

Geoffrey has a long-standing experience in Finance. He started his career in Private Equity specialized in infrastructure & renewable energy and then shifted to the advisory world, to join Capstone Finance a M&A firm based in Paris. Geoffrey joined the DVN team in 2021 to oversee the Finance & Operations and the development of all future DVN events. In August 2024, Geoffrey became president of DVN.



Paul-Henri Matha

Graduated from Ecole des Mines Saint Etienne in 2000. 18 years' experience in Renault France in the lighting department, from project leader position to lighting expert. 5 years' experience in Volvo cars Sweden as exterior lighting, technical leader. Member of SAE lighting expert group. Former Member of GTB, chairman of working Group installation and co-chair of working group Strategy. President of SIA VISION Congress. Member of IFAL organization committee. Member of ISAL organization committee. Paul Henri joined DVN in August 2023 and has been appointed CEO in August 2024.



Wolfgang Huhn

Wolfgang Huhn studied electrical engineering at the Technical University of Darmstadt from 1981 to 1986 and then worked at BMW until the end of 2000, where he held various management positions in the field of lighting technology and project management. From 2001 to 2020, he served as Executive Director of Lighting Systems Development at Audi, introducing innovative projects. In 2011, he received the «Professor Ferdinand Porsche Prize» and was named «Man of the Decade». Since 2021, he has been a Senior Advisor at DVN and Chairman of the GTB Working Group on Lighting and Signaling and was elected President of GTB in 2025.



Daniel Stern

Daniel Stern, DVN's Chief Editor based in Vancouver, BC, Canada, is considered by DVN President Hector Fratty as one of the five greatest lighting experts in North America. He is an appointed member of the US transportation Research Board Visibility Committee, which steers North America research on matters related to automotive conspicuity, lighting performance and regulation. He is an active member of the SAE Lighting Systems Group, and attends and participates in the world's automotive symposia and technical conferences.



Hector Fratty – DVN founder

Hector Fratty's entire career has been in automotive lighting. From 1995 to 2006, he was Valeo Lighting's chief of R&D. His level of expertise in lighting gained him recognition as one of Valeo's five Master Experts. In 2008, he initiated the launch of his own company, Driving Vision News, which has become the automotive lighting and driver assistance industry's journal of record dedicated to keeping the community informed and communicating about the latest progress and developments.



Gerd Bahnmüller

- Studied at the University of Stuttgart from 1982, graduating with a degree in Mechanical Engineering.
- From 1987, spent six years working in technical IT at Robert Bosch GmbH.
- From 1993, Head of Department for Design and Lighting Technology in the Headlamp Division of Robert Bosch GmbH.
- 1999: joint venture with Magneti Marelli and foundation of Automotive Lighting.
- From 2001, Head of the Front Lighting Development Centre.
- From 2007, Director of R&D for Front Lighting with global responsibility.
- From 2014, Vice President of R&D Lighting and Electronics at Automotive Lighting and Marelli, leaving at the end of 2020.
- Currently an independent consultant and DVN Senior Advisor.



Jean-Paul Ravier

Jean-Paul Ravier graduated from ISAE SUPAERO and IAE Paris. He worked for over 41 years at Valeo, including 29 years at Valeo Lighting where he held a variety of management positions first in IT and finance, and then in R&D, projects, and innovation, including in Japan from 2005 to 2009 at Ichikoh as a board member and managing director. He retired from Valeo in 2013. Shortly thereafter he was appointed chair of the ELS program (Embedded Lighting Systems) for Advanced Master training and Research in Lighting at the Institut d'Optique Graduate School, ESTACA and Strate School of design. He held that position through the end of 2017 and is now Senior Advisor for DVN.



Thomas Fröhlich

Thomas Fröhlich started his professional career in Bosch on basic research for autonomous driving in 1989. Soon he joined the lighting division of Bosch to work on lighting electronic design. After joint venture with Magneti Marelli he took over in 2002 the worldwide responsibility for R&D and project management on lighting electronic added by body electronics. To extend the business of Automotive Lighting to new fields he built up design and management activities on new business fields like interior lighting and LiDAR sensing. Starting 2020 he took over the responsibility in Marelli for product management of lighting and exterior sensing. Since mid-2022 Thomas has retired and is now supporting DVN as consultant.



Michael Hamm

Michael Hamm earned his physics diploma in 1993 and a doctorate in electrotechnics in 1997 from the Technical University of Darmstadt. He began his career at Bosch in 1996, later Automotive Lighting, where he led global headlamp projects and pioneered technologies such as adaptive HID systems, automotive infrared, and the world's first full-LED headlamp. From 2012 to 2022, he headed Audi's headlamp development, introducing innovations including matrix-beam headlamps, dynamic turn indicators, laser high beams, and digital projectors. Author of 76 technical papers and inventor on 85 patents, he has been a lecturer at TU Darmstadt since 2022 and, since 2023, Senior Adviser to DVN, supporting industry standardization and research.



Hans Joachim Schwabe

Hans, a graduate in electronic engineering and business administration, has over 30 years of experience in the lighting industry. He began his career as a strategic consultant at Siemens before joining Osram in 1991 as a Senior Product Manager in vehicle lighting. Between 1997 and 2001, he held various managerial roles, progressing through R&D, product management, and sales in industrial lighting. From 2002 to 2005, he served as Managing Director of Osram Taiwan. He later managed the global Display Optic business unit in Berlin, overseeing plant operations and sales. In 2009, he merged Osram's vehicle lighting and display optic units into the Specialty Lighting Unit and was appointed CEO. In 2018, he focused on leading the vehicle lighting business as CEO, also supervising the joint venture with Continental. In 2023, he transitioned from Osram to pursue executive and strategic consulting in lighting.



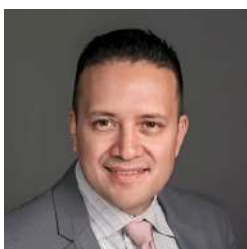
Éric Blusseau

Eric made most of his career at Valeo Lighting. He spent more than 30 years in Optics and Regulations. He started in research and developments at Bobigny for 13 years in the development of complex shape reflectors and elliptic modules. He was a key player in the development of HID lights in the '90s, and was appointed optical expert in 1997 and senior expert in 2000. In 2001, he moved to Angers to create the Optical Development Department. His work entailed hiring and training optical engineers; implementing design and simulation tools; creating the 25-metre dark room and the optical laboratory, and managing the approval of new lamps. In 2009, he took responsibility for the regulation and approval department of Valeo Lighting. He created and managed the regulation network inside Valeo Lighting Systems with one Regulation Manager in each development centre: Angers, France; Martos, Spain; Le Hainault, Belgium; Seymour, Indiana, USA; Wuhan, Foshan, China; Pianezza, Italy; São Paulo, Brazil; Queretaro, Mexico; Chennai, India; and Isehara, Japan. He was a French Delegation Expert at GTB, and a member of the GTB delegation at GRE. In 2017, he was appointed Chair of the GTB Front Lighting Working Group. Along all his career, he was inventor or co-inventor of 48 patents.



Franco Marcori

Graduated in electronic engineering in 1996, developing a thesis on the design of diffractive optics at Seima Italiana (Tolmezzo, Italy), that then became part of Automotive Lighting. He has worked in the automotive business for 20 years, holding various managerial roles from optical engineering to electronic design, from innovation and technical marketing to applied research. In 2012 he has been appointed Technical Director of CRP, a research center devoted to applied research in the field of opto-electronics and plastics. From 2004 to 2016 he was the company's regulatory manager for rear lamps, delegated to participate in the activities of CUNA and GTB. From 2016 to 2022 he worked at Gewiss (Cenate Sotto, Bergamo, Italy) as Operations and R&D Director of the lighting business. From 2022 to 2023 he came back to automotive as R&D Engineering Senior Manager of Olsa (Magna Lighting, Turin, Italy) and in 2024, after getting a Temporary Management international certification, he started his Senior Consulting activity.



Felipe Melhado

Felipe Melhado is an engineering executive with 25+ years in automotive lighting and product development. He holds a graduate degree from the University of Michigan and has led multinational teams while driving innovations at Hella, Varroc, and Flex-N-Gate. Notably, he pioneered the first all-LED headlamps and excels in design, manufacturing, and quality, ensuring efficient product launches and business success. As of 2025, he serves as a Lighting Senior Advisor for DVN, based in Michigan, USA.



Emilie Ogor Bonnet

Emilie entire career has been in event organization, content management, and crafting 360° marketing strategies across all communication channels to enhance brand visibility. Emilie started in 2007 at Valeo in the the communication department, then joined the SIA as manager for all event and communication for 10y. Building on this experience, Emilie shifted her focus to digital solutions, leading the digital marketing departments of several startups. In 2024, she joined DVN as Marketing and Communication Director.



Christophe Lameiras

Christophe has extensive experience in the financial industry. With several successful internships in accounting firms. He joined a major business school and was able to study in Paris, San Francisco and Shanghai. In March 2021, he joined DVN for his end-of-study internship alongside Salomon Berner and since September 2021, he's responsible for the finance department and the back office.



Eiichi Ono

Since starting at Nissan Motor Co., Ltd., Product Development Division, most of time he has been working in Automotive Industry more than 40 years experiences, through having engaged in several Japanese and Foreign-affiliated Global Companies for Exterior components especially Lighting System and Interior and Electric/Electronics products fields. Since 2019, he has been a Representative of DVN Japan.



Ann Ai

Living in Shenzhen China, she is quite proficient in English Language, after 12 years international marketing working experience in general LED lighting, she joined DVN since 2021 as representative basing China, supporting DVN China operation for Lighting, Interior and Sensing.



Cindy Freixeda Dias

With a Bachelor's degree in Fashion and Digital Marketing, she is currently pursuing a Master's in Event Strategy and Production at Sup de Pub Paris while working in a work-study program. As our Event & Communication Coordinator, she manages event logistics, booth setups, and LinkedIn communications, ensuring the successful execution of each project.

WHAT IS INCLUDED IN THE DVN LIGHTING SUBSCRIPTION PACKAGE?



DVN Lighting Subscription Package:	① Gold Membership	② Platinum Membership	③ Diamond Membership
Users	1 user	10 users	Unlimited users
Weekly Newsletter	Yes	Yes	Yes
Monthly reports	Yes	Yes	Yes
Your company page on DVN Website	Yes	Yes	Yes
Invitation/year to DVN Lighting Workshops, Welcome Dinner included	1 invitation	3 invitations	6 invitations
Annual rate	€ 6,900	€ 13,800	€ 19,700

What are DVN Benefits for DVN member Companies?

Learn about new technologies, evaluate their strategic interest for your company

Promote your company innovations towards qualified customers, only high level decision makers

Network with high level decision-makers and forge new business with new customers

DVN ECOSYSTEM AND SCIENTIFIC COMMUNITY



DVN is a reference in the world of Lighting, Interior comfort and Lidar

Car Makers

Audi
Avatr Technology
Bentley
BMW
Ferrari
Ford
Ford Otosan
General Motors
Genesis
Hero MotoCorp
Honda
Hyundai
Jaguar-Land Rover
Kia
Lotus cars
Lucid Motors
Mazda
Mercedes-Benz
Mitsubishi Motors
Nio
Nissan
Renault
Rivian
Seat
Stellantis
Subaru
Toyota
TVS
SAIC Volkswagen
Volvo Cars
Zoox

System Suppliers and Tier 1s

Adient
Anru
Appotronics
Aspöck Systems
Braslux
Cepton
Ceres Holographics
Chongqing Rebo
Continental
Creat
Diode Dynamics
Elba
F2J Industry
Feka
Fiem Industry
Flex-N-gate
FORVIA designLED
FORVIA HELLA
GHSP
Grupo Antolin
Hascovision
Hitachi
Ichikoh
J.W. Speaker
Keboda
Koito
Lightworks
Lumax

Luxit
Maier
Magna
Marelli
Marquardt
Mind
Mobileye
Mobis
Muth Mirror Systems
Nordic Lights
Odelo Farba
OPmobility
Panasonic
Polycontact
Prettl group
Rehau
SL Corporation
SMR Automotive
Stanley
The Lighting Consultants
Toyota Boshoku
Uno Minda
Valeo
Varroc
Weidplas CH
Xingyu
Zanini
ZKW
Zodiac

Light Source Suppliers

ams OSRAM
APT Electronics
Brightek
Dominant Opto Tech.
Everlight Electr.
HC Semitek
Kyocera SLD Laser
LG Innotek
Liteon Technology
Lumileds
Nichia
OLEDWorks
Refond
Samsung LED
Seoul Semiconductor

Tier 2s and service providers

A2Mac1
Ascorium
AML Systems
Ansys
ASAP
ASYST Technologies
Auer Lighting
BASF
Bluebinaries
Brightview Technologies
Capgemini

CLM Search
Coindu
Covestro
Dajac
DBM Reflex
Delo
Die haptiker GmbH
Docter Optics
Dow
Edag
Elmos
Endego
Ennostar
Euro Moulders
EV Group
Focuslight
Fusaware
Grewus
HJ Optics
Huawei
Idemitsu
Infineon
Inova Semiconductors
Instrument Systems
Integrity
Joysonquin
Leonhard Kurz
L.E.S.S.
LMT
Luminus
Mektec
Microvision
Maxell Frontier
MD Group
Melexis
Microchip
Microrelleus
Mitsui Chemicals
Mocom
Nalux
NBHX Trim
Oerlikon
ON Semiconductor
Polyrise
Preh
Ray Group
S&P Global Mobility
Sabic
Seaborough
Seoyoneh-Ewha
Shihu
SP3
Sunny Automotive Optech
Suzhou Senbo
Synopsys
TechnoTeam
Toshiba lighting
TQ Technology
Uni Tooling
Ventura
W.L. Gore & Associates
WLOPT
X2F
Xunchi

Universities, NGO and labs

Alliance for Automotive Innovation
ARAI
(Automotive Research Association of India)
BMDV
(Bundesministerium für Digitales und Verkehr)
CATARC
(China Automotive Technology and Research Center)
CEA Leti
Darmstadt university
DEKRA
Department for transport, UK
DTI *(Danish Technological Institute)*
Estaca
(École supérieure des techniques aéronautiques et de construction automobile)
Fraunhofer FEP
Fraunhofer IAP
Fraunhofer ILT
Fraunhofer IMS
Fudan university
GTB
Hannover Leibniz
Hochschule Aalen
Hochschule Magdeburg-Stendal
Icahn School of Medicine at Mount Sinai
(Light and Health Research Center)
ICAT
(International Centre for Automotive Technology)
Idiada
Institut d'Optique
JASIC
(Japan Automobile Standards Internationalization Center)
KBA *(Kraftfahrt-Bundesamt)*
KATRI *(Korea Apparel Testing & Research Institute)*
KIT *(Karlsruhe Institute of Technology)*
Kotsa *(Korea Transportation Safety Authority)*
LCOE
(Laboratorio Central Oficial de Electrotecnia)
L-LAB
MLIT
(Ministry of Land, Infrastructure, Transport and Tourism)
NHTSA
(National Highway Traffic Safety Administration)
OICA
(International Organization of Motor Vehicle Manufacturers)
Pacific Northwest National Laboratory
RDW
RISE Research Institutes of Sweden
Sapphire STS
SMMT
(Society of Motor Manufacturers And Traders)
SMVIC
(Shanghai Motor Vehicle Inspection Certification)
TNO
Traficom
Transport Canada
UMTRI
Université Gustave Eiffel
UTAC
VDA *(Verband der Automobilindustrie)*
VEDECOM
Vrije Universiteit Brussel
YoungNam University