

29 / 30

OCTOBER 2025

SHANGHAI GOLDEN FURNACE · CHINA BAOWU
STEEL GROUP CONFERENCE CENTER



DVN SHANGHAI WORKSHOP

SOCIAL COCKTAIL • MEET & GREET DINNER • CONFERENCE • EXPO

CHINA DISRUPTIVE MARKET – TECHNOLOGY, COST, SPEED

HOW DOES IT AFFECT THE WHOLE AUTOMOTIVE LIGHTING COMMUNITY ?





Sense the power of light

Advancing optical
solutions in mobility

ams-osram.com

ams **OSRAM**

做为智能出行及车内外环境改善提供系统方案的创造性企业

To become an innovative enterprise which provides system solutions for intelligent travel and in-car environment improvement



设计 · 制造 · 自动化 · 装配

Plastic Heat Sinks, Micro Adjusters, High Pull-out Force Socket, Compact Adjusters, Component Adjusters, Tolerance Compensators, & Cables



塑料散热器



高强度球头支座



微型调节器



集成式手动调节器



分体式手动调节器



公差补偿



柔性调节器

ASYST

 Brightek

LIN-Lite

The Power of Simple.

DVN Lighting Workshop

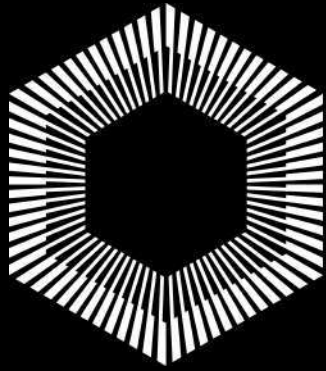
Oct. 29 01:30 PM | Interior Lighting EE Architecture
Speech Topic: LIN-Lite Smart LED – Next-gen Innovation for
High-Efficiency Ambient Lighting
演講主題: LIN-Lite 智能LED - 次世代高效能車內氛圍燈



Follow up on our socials.

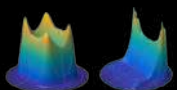
Visit Us at
Brightek.com

 Brightek



BRIGHTVIEW TECHNOLOGIES

Computational Optics for Automotive Applications



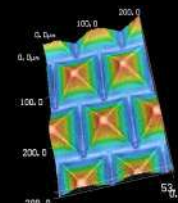
Infinite Beam Shaping Options



Thin Film Form Factor



Energy Efficiency / Sustainable



Micron
Structures

DESIGN BRILLIANCE MEETS
VISUAL INTELLIGENCE™

www.brightviewtechnologies.com



使命 MISSION

照亮精彩出行

ILLUMINATE IN MOTION

愿景 VISION

成为客户首选的汽车智能照明合作伙伴

TO BE THE CUSTOMERS' PREFERRED SOLUTION PROVIDER OF AUTOMOTIVE LIGHTING SYSTEMS

价值观 VALUES

诚信正直 客户至上 协同担当 精益求精

INTEGRITY

CUSTOMERS

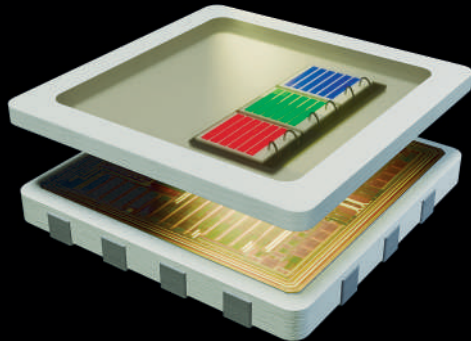
COLLABORATION

OPTIMIZATION



尚界 H5

华域视觉科技（上海）有限公司



The Smart LED Technology

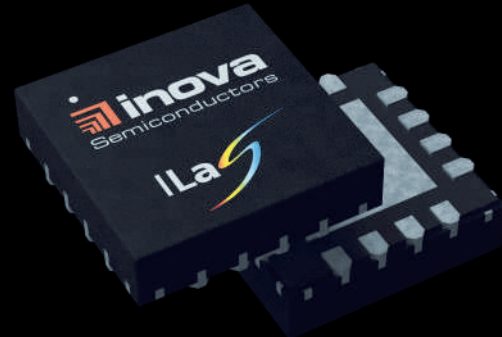
Highly integrated driver IC and LED.

Daisy-Chaining of up to 4079 ISELEDs at highest speed.

Pre-calibrated LEDs by manufacturer with bi-directional communication & diagnostics.

Plug 'n' Play - Expandable single architecture for functional, ambient & direct lighting.

Enhanced performance: ISELED 2.0



The Light and Sensor Network

Single centralised point of software control. Factory calibrated LEDs – Temperature compensation algorithm integrated in ISELED hardware.

Enables complex synchronized light architectures, with Over-The-Air updates made easy, providing significant system cost savings.

On chip DC/DC control in INLT220Q & ILaS RGB LEDs.

Reduction of weight and harness with max. features at lowest system cost.

The ISELED Ecosystem with +200 devices offers total freedom of choice and reduces supply chain risks.

With contributions from Analog Devices, Microchip, NXP, Renesas, Autochips, YTMicro, Bluewhale, Zhixin, CoAsia, Dominant, Everlight, Harvatek, Lextar and Liteon



光学解决方案

为光学行业提供业界领先仿真工具

拥有 CODE V, LightTools, RSoft, LucidShape, ImSym, VisionSym 等世界知名光学设计软件,可应用于AR/VR、通用照明、车载光学、杂散光分析与超透镜设计等,并提供光学设计工程服务。



幻彩MDL全球首发产品

Chromatic MDL makes global debut
—Micro Display Lighting

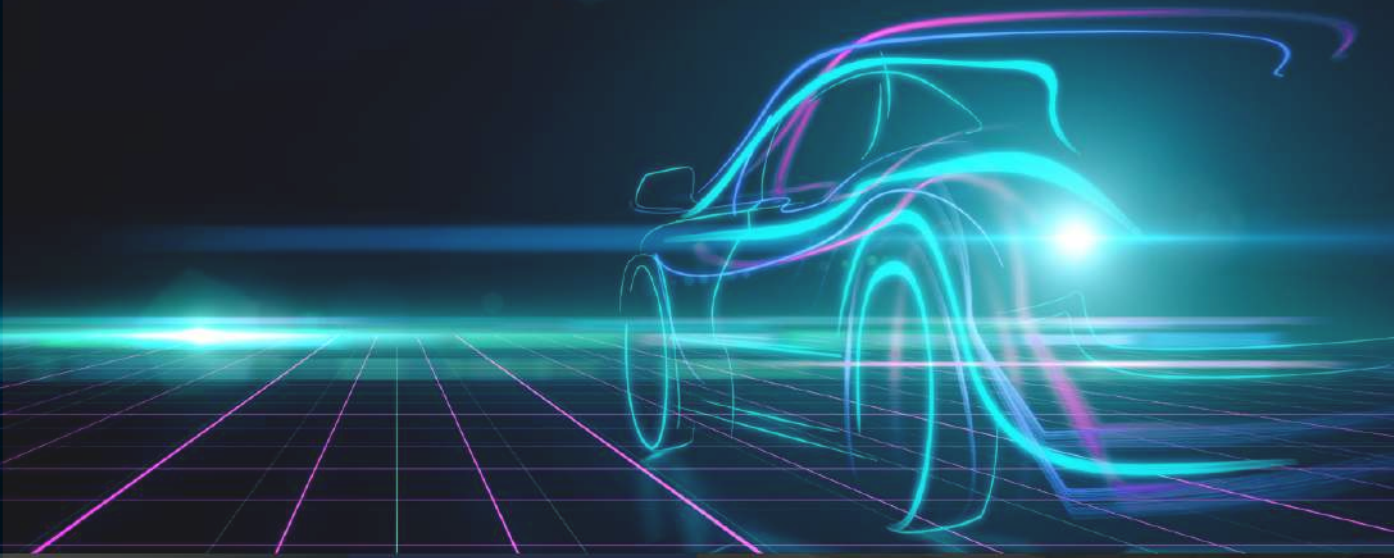
全球首创幻彩-MDL，随场景智能变幻，解锁情绪表达新维度。
以光叙事，以影共情。光影随行，智驭未来。车与心灵同频共振，让每一次出行都成为焦点。

The world's first Chromatic-MDL, intelligently changing with the scene, unlocks a new dimension of emotional expression. It tells stories with light and evokes empathy with shadow. Light and shadow accompany you, intelligently steering towards the future. The vehicle resonates in harmony with your soul, making every journey a spotlight moment.

Visit us at
our booth—S4



Light the World



**Transformative
LED Light**

Color Mixing

**Precision Beam
Control**

**Optimized FOV
Displays**

Luminit Light Shaping Solutions Include



Thin Film

Patented diffusers that shape light for high-efficiency LED use.



Rigid Sheets

Engineered sheets deliver superior diffusion for structured light control.



Glass-on-Glass

Durable glass optics for demanding environments and consistent diffusion.



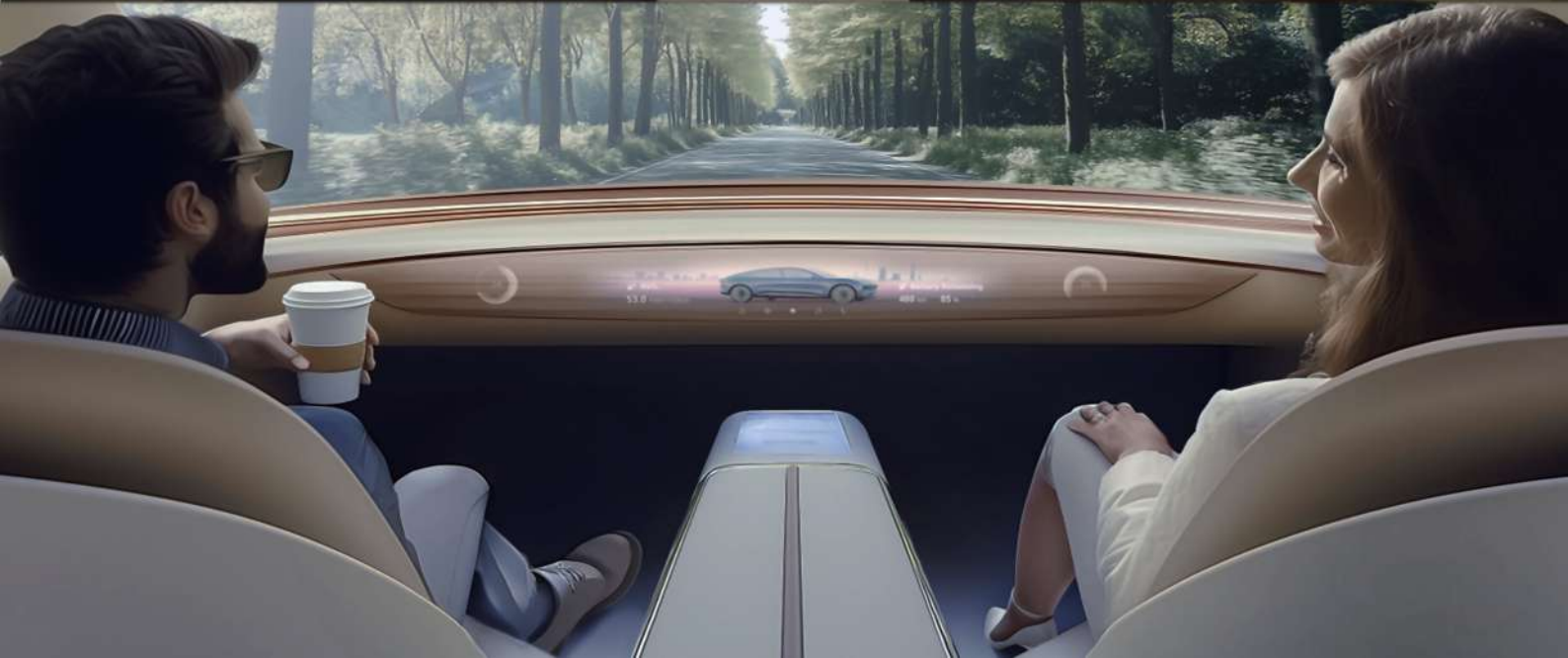
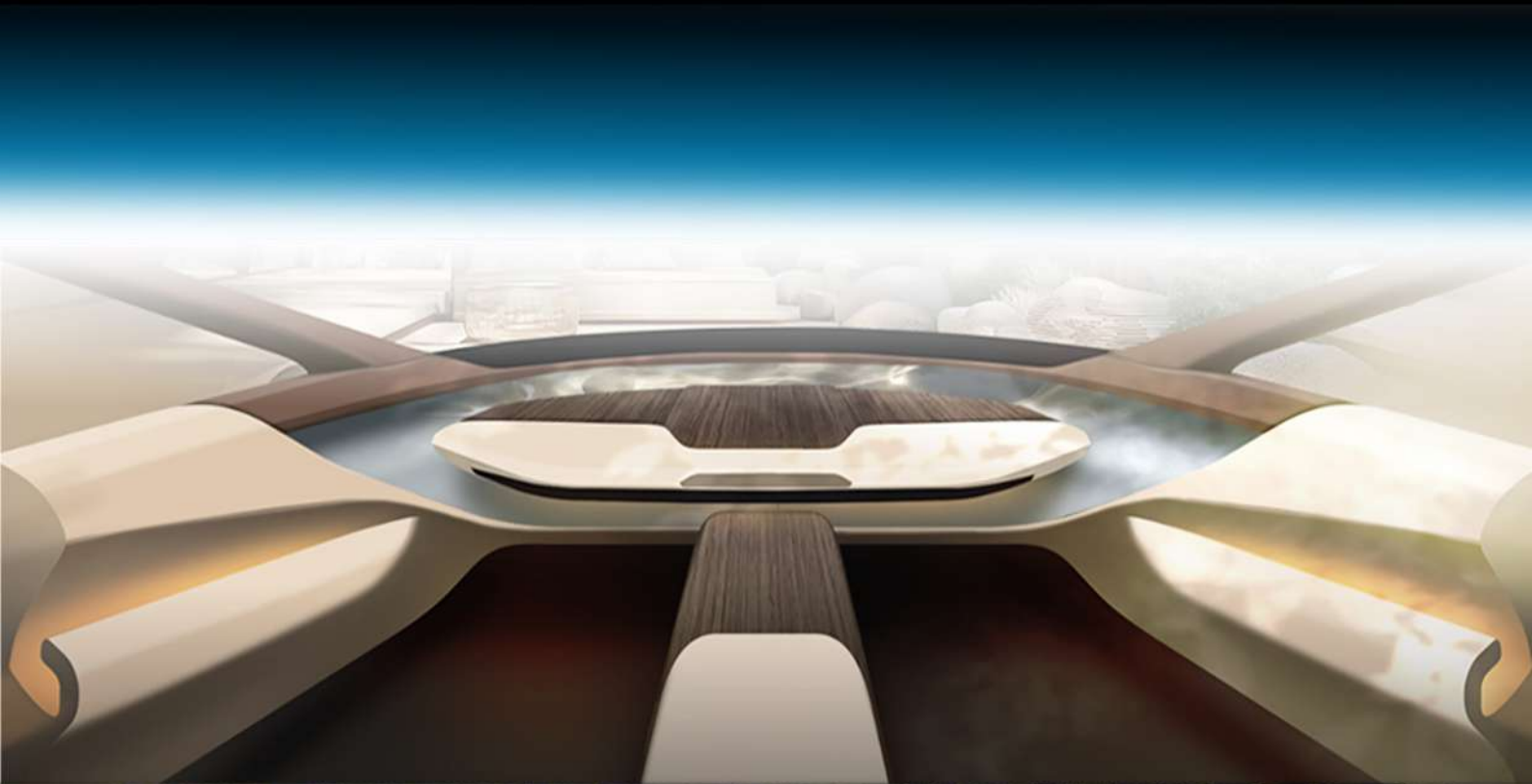
Injection Molded

Cost-effective molded optics with precise beam control for mass production.



Immersive Cabin

Personal cabin space that refresh and calm the mind and provide a new mobility experience





MIND Opto-electronics

For over a decade, we have been at the forefront of innovation and technology in automotive lighting systems. Our goal is to lead the industry's development and establish ourselves as a premier independent supplier for high-quality customers



Contact us -MIND

Add: NO.75 Dongsheng Road,Lianchi District,Baoding,Hebei,China

Email: mindlighting@mind-ea.cn

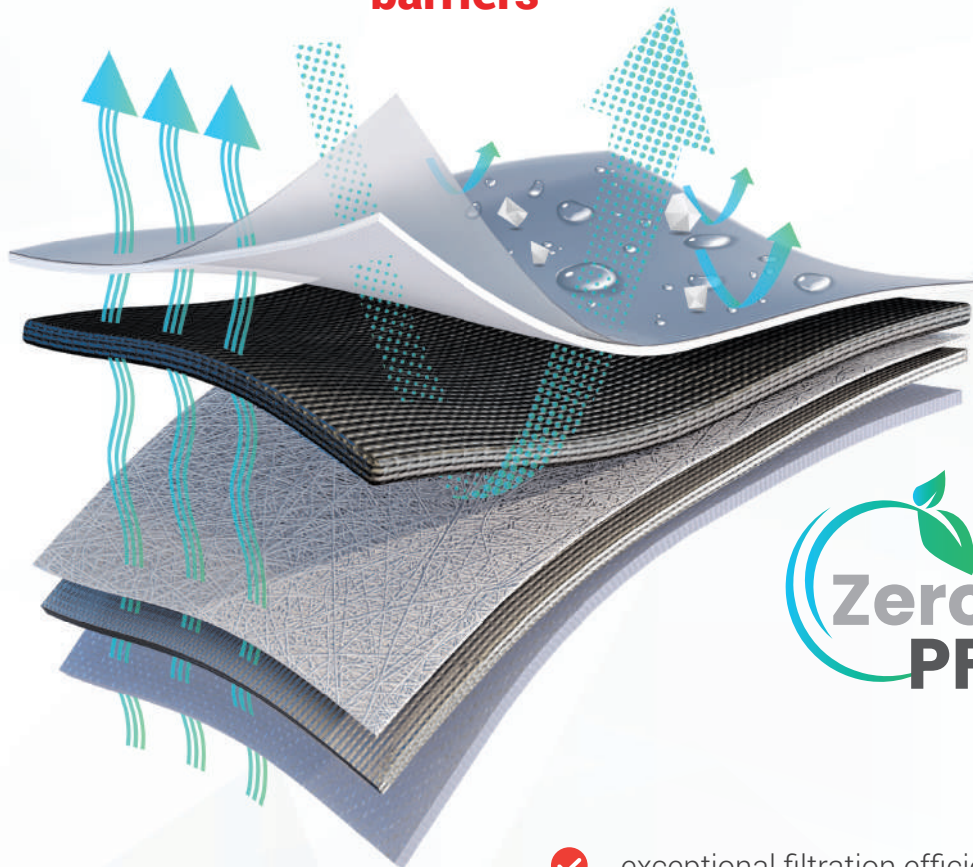
Tel: 0312-2198896

Official website: <https://www.mind-group.com>



NanoVents

**PFAS-free Vapour permeable
venting & protective nanomembrane
barriers**



- ✓ ZeroPF – 100% PFAS/PFOA/PTFE-free
- ✓ high airflow
- ✓ fast pressure equalization
- ✓ superior vapour permeability
- ✓ high hydrostatic resistance
- ✓ exceptional filtration efficiency
- ✓ enhanced desiccation capability
- ✓ adjustable multilayer construction
- ✓ high rigidity / long-term durability
- ✓ high-performance nanocomposite surface treatment

www.nanovents.com



Booth No. S6

Improving interaction with integration of design and functionality

Trusted solutions for exterior and interior including:

- Rear lamp Inner lens Design w/ functionality
- Exterior Décor film
- Grille / Indium film w/ free wave for ADAS
- HiddenDisplay, icons and graphics
- Wire heater + ADAS wave free material
- AR Solution - High level color matching between plastic bezel and center display



Rear Lamp Inner Lens



HiddenDisplay



AR Solution
High level color matching between plastic bezel and display



Embedded Heater

Turning Mobility into the Future of Living Spaces



SAFETY



COMFORT



SUSTAINABILITY

For more detailed application insights, manufacturing capabilities and contact information

Website



Nissha Industrial and Trading (Shenzhen) Co., Ltd.
@Shenzhen Headquarters, China

Nissha (Kunshan) Precision IMD Mold Co., Ltd.
@Kunshan, China

Guangzhou Nissha High Precision Plastics Co., Ltd.
@Guangzhou, China

Nissha Co., Ltd.
@Kyoto, Japan (Global head quarter)

Global Manufacturing Network



NOVOSENSE One-Stop Automotive Lighting Solutions

Interior Ambient Lighting

Ambient Lighting Driver
NSUC1500

Display Backlighting

Backlight LED Driver
NSL6103/4x

Rear lighting & Front Signal Lighting & Illuminated Grilles

Linear LED Driver
NSL2161x, NSL2163x
NSL21912/16/24
NSL23716x

ADB Headlighting

Pre-Boost Controller
NSL31682
Buck LED Driver
NSL31520
LED Matrix Manager
NSL31664/5



Featured Products

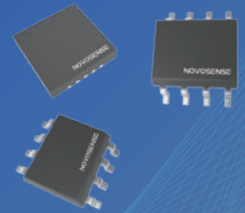
Automotive 12/16/24-channel Linear LED Driver NSL21912/16/24

- Up to 100mA output current per channel
- Innovative thermal sharing based on VS Shunt resistors
- UART communication interface supporting up to 2Mbps
- ASIL-B functional safety option available



Automotive 4-Channel Highly Integrated Ambient Lighting Driver NSUC1500

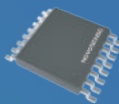
- 32-bit ARM® Cortex®-M3
- Up to 64mA output current per channel
- LIN PHY compliant with LIN2.x and SAE J2602
- Compliant with CISPR 25 Class 5 EMC standard



New

Automotive 3-channel Linear LED Driver NSL2163x

- Directly powered by the battery with a wide 5V–40V supply range
- Up to 200mA output current per channel
- Thermal sharing by external shunt resistors
- LED open-/short-circuit detection and thermal shutdown



Automotive Dual-Channel Constant-Voltage Boost Controller NSL31682

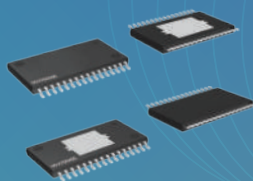
- Wide input voltage range: 5V to 65V
- Switching frequency range: 100kHz-1MHz
- Supports Standalone operation mode in case of power-up communication failure
- Supports both hardware and software Limp Home operation modes



New

Automotive Dual-Channel Buck LED Driver NSL31520

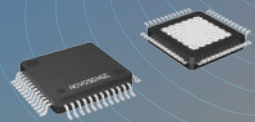
- Wide input voltage range: 4.5V to 65V
- Up to 1.6A output current per channel with optimized ±4% accuracy
- EMI Optimization: Spread-spectrum frequency control with configurable modulation rate



New

Automotive 16-Channel LED Matrix Manager NSL31664/5

- UART interface
- 10-bit PWM dimming accuracy
- Comprehensive protection and diagnostics
- Supports Flexible UART mode to reduce clock accuracy requirements



New

NOVOSENSE Microelectronics

sales@novosns.com

www.novosns.com

NOVOSENSE Microelectronics

NOVOSENSE Microelectronics



1.5次光学集成光源

1.5X Optical Integration Light Source

光源新形态
创新新思路

A New Light Source & An Innovative New Concept



循光微信公众号

onsemi™

Intelligent Technology. Better Future.

软件定义汽车的区域架构之下，
安森美基于**10Base-T1S**的车灯
方案诠释创新价值



视频号



公众号

罗姆是全球领先的甲基丙烯酸酯生产商之一。我们提供全套PMMA产品系列，以满足汽车行业的高度专业化要求。在我们全球汽车团队支持下，颜色配方符合SAE J576c的要求。所有产品均符合FMVSS 108技术规范，并列入AMECA的清单。

RÖHM

罗姆展台
S2

环保升级，工艺不变：
宝克力® *proTerra 8N*，
降低碳足迹的理想之选。

选择宝克力® *proTerra 8N*，让绿色更多一点，碳排放更少一点。微信扫码查看宝克力®精彩案例。



PLEXIGLAS®
THE ORIGINAL BY RÖHM

Consulting – Design – Manufacturing – Support

Sunnex
ENGINEERED FOR RELIABILITY

Advanced Optical Lenses for Automotive Lighting Systems



25+ year track record of success in taking customer concepts from design through mass production.

SUNEX INC.

3160 Lionshead Ave, Suite B
Carlsbad, CA 92010, USA
Tel: +1 760-597-2966
sunex.com/contact



SUNEX China.

No.28 Baoyi Road, Songjiang Industry,
Shanghai, China
Tel: +86-21-57746017

sunex.com



大茂堤维西汽车部件有限公司
TYC Changzhou Auto Parts Co., Ltd.

致力于市场提供高性价比的主流技术和产品



Committed to Value-Driven Technology & Products

大茂堤维西汽车部件有限公司
TYC Changzhou Auto Parts Co., Ltd.



Company Profile & Global Presence

大茂堤维西汽车部件有限公司为台湾堤维西集团全资子公司，1995年成立于江苏常州，2013年设立重庆分公司。

集车灯研发、采购、生产、销售于一体，业务覆盖北美、欧洲、亚洲，客户涵盖自主、合资及主流新能源品牌20余家。大茂堤维西汽车部件有限公司为台湾堤维西集团全资子公司，1995年成立于江苏常州，2013年设立重庆分公司。

TYC Changzhou Auto Parts Co., Ltd. is a wholly-owned subsidiary of Taiwan TYC Group. It was established in Changzhou, Jiangsu Province in 1995 and set up a branch in Chongqing in 2013.

It integrates the research and development, purchasing, production and sales of automotive lighting. The business covers North America, Europe and Asia. We have over 20 customers including local OEMs, joint ventures and mainstream new energy brands.



Technical Strength & Core Certifications

具备30年海内外OEM车灯同步开发经验，拥有专利200余项，获省高新技术企业、省“专精特新”等荣誉。

通过IATF16949、ISO14001等体系认证及福特Q1、奇瑞捷豹路虎JLRQ等客户审核。

With over 30 years of experience in synchronous development of OEM automotive lighting both at home and abroad. We have more than 200 patents and have been honored with titles such as Provincial High-tech Enterprise and Provincial "Specialized, Refined, Unique and Innovative" Enterprise. We have passed IATF16949, ISO14001 and other system certifications, as well as customer audits from Ford Q1 and Chery Jaguar Land Rover JLRQ.



Industry Position & Operational Scale

国内车灯行业综合排名TOP 10，与主流主机厂长期稳定合作。

2024年常州、重庆两厂营收超25亿元，员工2000余人，重庆工厂跻身重庆制造民企100强。

We are among the top 10 comprehensive rankings in the domestic automotive lighting industry. We have maintained long-term and stable cooperation with mainstream OEMs. In 2024, the combined revenue of our Changzhou and Chongqing plants exceeded 2.5 billion RMB. We have over 2,000 employees. The Chongqing plant has been listed among the top 100 private manufacturing enterprises in Chongqing in 2024.



全域智能照明

LIGHTING EVERYWHERE



照明新纪元: 赋能安全, 重塑造型,
提升性能, 践行可持续承诺

Innovative exterior and interior lighting systems
for Safety, Style, Performance & Sustainability

欢迎访问 www.valeo.com 了解我们更多的创新技术

Visit www.valeo.com to discover our latest innovations

SMART TECHNOLOGY FOR SMARTER MOBILITY

XINGYU LIGHTING

BRIGHTEN THE WORLD

星宇车灯 照亮世界

Xingyu Lighting, with 32 years of expertise in automotive lighting technology, has extensive experience in the Chinese market and is now entering global market. Our products are continuously evolving toward intelligence, including HD solutions in headlamp, OLED & ISD solutions in interactive rearlamps, and also 360° compact projection lamps.



www.xyl.cn



[A member of LG]

BRIGHT MINDS,
BRIGHT LIGHTS.



Visit our Website
www.zkw-group.com



[VISIT US AT BOOTH S40]

