

MOCOM

**We drive
compounding
excellence**

Our Founding

1.7.2020
Registration
ALBIS Distribution

Albis Plastic

ALBIS Distribution

Albis Plastic

MOCOM Compounds

12.10.2020
Registration
MOCOM Compounds

Member of Otto Krahn Group



Vision
As a family company we create lasting values based on the ambition for Partnership, Sustainability and Innovation.

Mission
We are an enabling platform and guide businesses to drive their successful growth and future.

Accelerate our Future – Transformation Process

MOCOM as a new business and brand in the market was launched mid July. Legal entity created in October.

Direct Sales established

Around 1#300 customers in EU. Dedicated Sales, Marketing and Technical Service Teams and Customer Service created

Our Direct Customers

We are expanding our direct customer base; currently we serve customers in DE, AT, CH, DK, SE, FR, ES, PT, PL, CZ, SL, US, MX, CN

ALBIS Distribution, Key Sales Channel

Customers not covered directly are handled by ALBIS as before

Business Activities

Compounding own brands, tolling for 3rd parties (incl. licence products for ALBIS).

QM Processes

All processes were updated after reorganization and IATF 16 949 certificate confirmed after July 2020 audit



Our Vision

**We drive compounding
excellence, innovation
and sustainability
creating thermoplastic
solutions of tomorrow.**

Facts & Figures



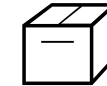
50
years' compounding
experience & know-how



> 5,000
customers
incl. ALBIS Distribution



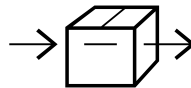
> 700
employees



> 4,000
products,
global specifications



> 1,000
development
requests p.a.



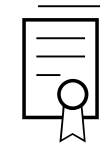
> 11,000
production
orders p.a.



5
production sites
DE, CN, US



63
compounding-lines
ZSK25 – ZSK80



Certificates
IATF 16 949:2016
ISO 50001:2011
ISO 13485:2016
EcoVadis

Production Sites

Americas

■ Duncan, SC, USA

Europe & Africa

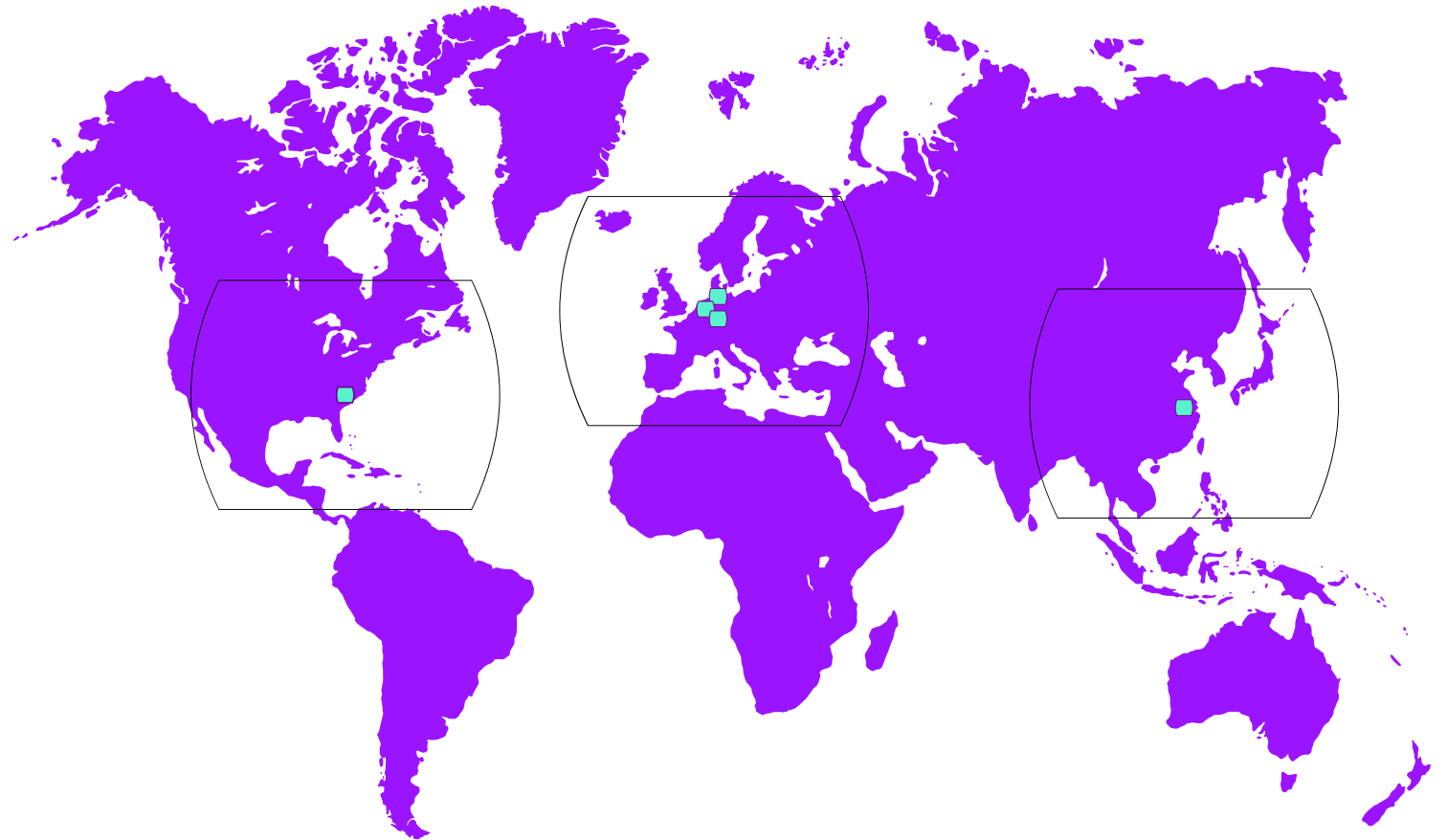
■ Hamburg, DE

■ Zülpich, DE

■ Obernburg, DE

Asia-Pacific

■ Changshu, CN



Sales Offices & Regions

Europe, Middle East & Africa

- MOCOM, Hamburg, DE
- MOCOM Direct Sales Region
- ALBIS Sales Region

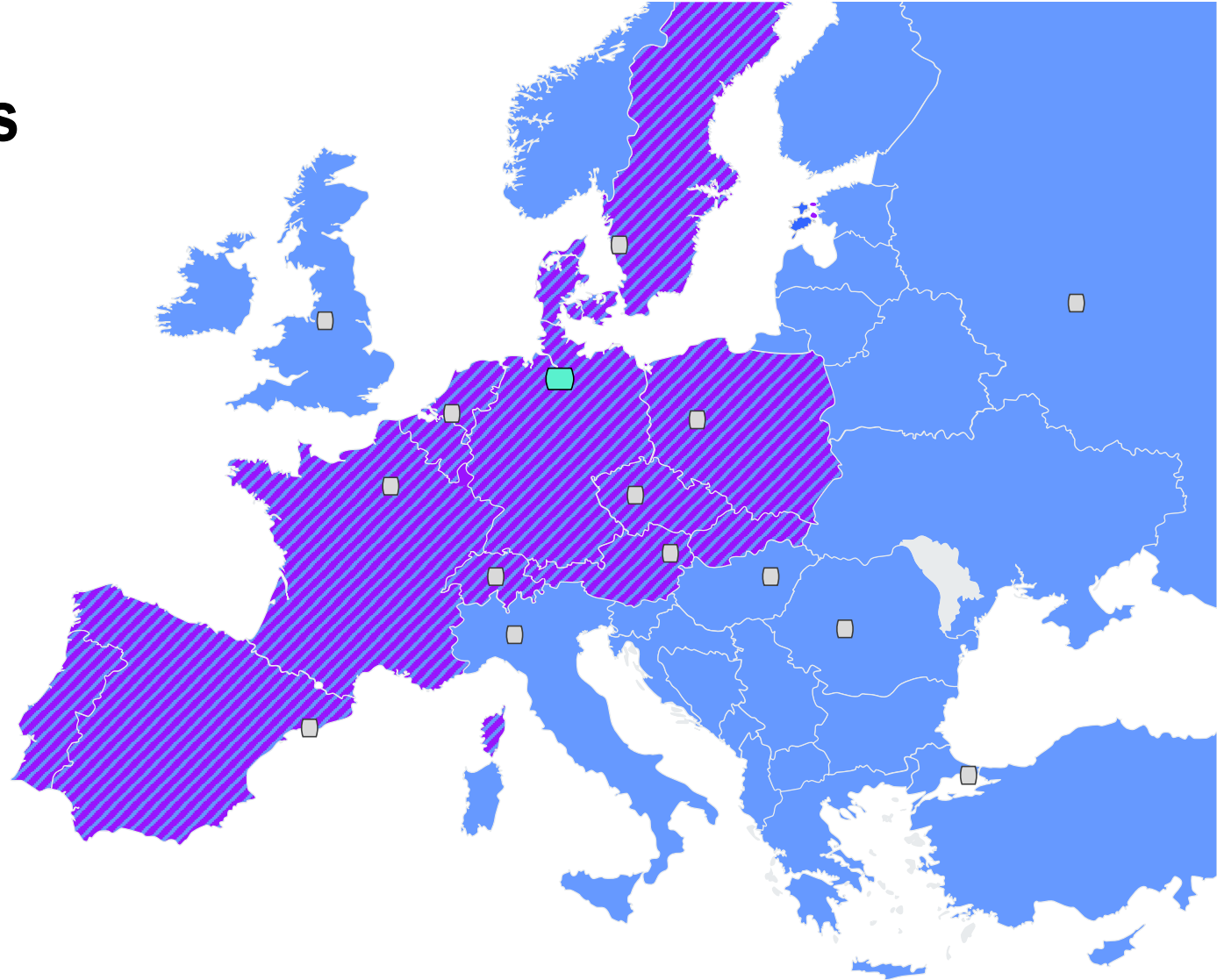
- ALBIS Offices
- ALBIS Sales Region

Asia-Pacific

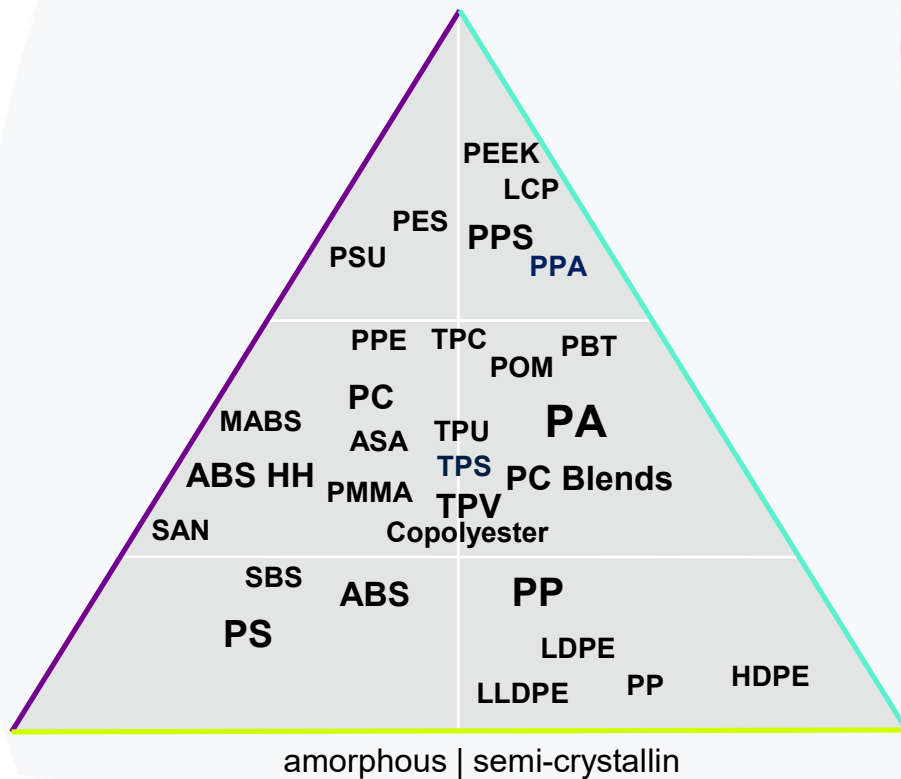
- MOCOM, Changshu, CN

Americas

- MOCOM, Duncan, SC, USA



Product Portfolio



SPECIALTIES

- ❖ Alcom[®]
- ❖ Alcom[®] MED
- ❖ Alcom[®] 3D
- ❖ Tedur[®]
- ❖ Cellidor[®]
- ❖ Alcolor[®]
- ❖ Alperform[®]

ADVANCED PRODUCTS

- ❖ Altech[®]
- ❖ Altech NXT PP[®]
- ❖ Alfater XL[®]
- ❖ Shelfplus[®] O₂

RECYCLING

- ♻️ Altech[®] ECO
- ♻️ Altech[®] IQ
- ♻️ Alfater XL[®] ECO

Technical Service Center

Expertise
from
design
to
series
production

Material Selection

Best material fit for your application

Design Support

Product-specific design support, incl. structural analysis and molding simulations

Processing & Process Optimization

Technical support for processing our materials – also on-site!

Product Development & Testing

Taylor-made product and color development based on your requirements



Market Expertise - We Understand Your Business



Automotive



Home & Garden



Electrical & Electronics



Healthcare



Industrial



Sports & Leisure

Our Business Development Managers and Product Specialists are working daily with customers to match application requirements with product properties finding the best material solutions.

We cover with our product portfolio various market segments and display here some typical applications as reference and inspiration for designers and material experts.

For more information refer to...
www.mocom.eu
info@mocom.eu

Innovative Specialties Performing For You

Specialty
products
for
ambitious
applications

- ❖ Alcom®
- ❖ Alcom® MED
- ❖ Alcom® 3D
- ❖ Tedur®
- ❖ Cellidor®
- ❖ Alcolor®
- ❖ Alperform®



Light Diffusion



Wear & Friction

❖ Alcom®



Thermal Conductivity



High Precision

Reflector For Front And Backlights

Alcom®

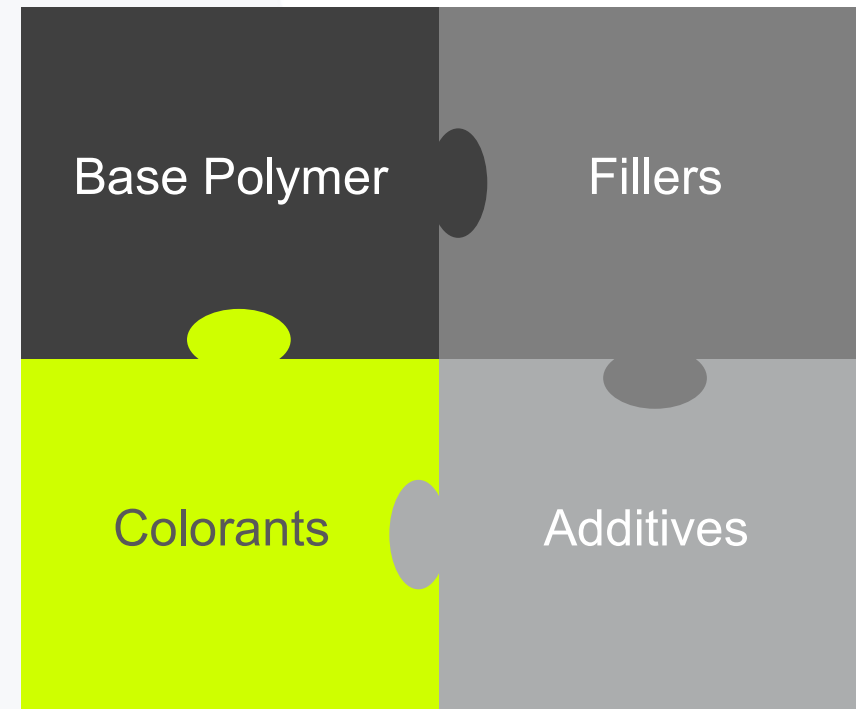
- PORSCHE, CITROEN, RENAULT
- **ALCOM PWL 10/1.1 WT1302-05LB**
- Material Solution
 - High light reflection
 - No leaking of light into neighboring chambers
 - Vaporizable with aluminum
 - High thermal stability
 - Design upgrade



Altech – Customized For You



- Altech thermoplastic compounds are specifically tailored to fulfill highly individual customer requirements
- >3,000 formulations with numerous reinforcements and modifications available based on PA6/6.6, PP, ABS, PBT, PC, PC-Blends, etc.
- By using our modular/ toolbox system, DOEs and experience we can develop additional compound variants according to our customer needs fast & flexible
- Altech compounds can be delivered in many different colors and tints, also with specially matched customer colors



Altech – Customized for you

Altech®

Material selection

High performance Altech NXT PP replacing PA6

Benefits:

- Lower density, cost effective
- Excellent mechanics
- Less moisture uptake
- Better dimensional stability

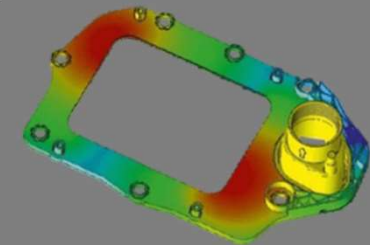


Design support

Moldflow simulation with Altech material data

Benefits:

- Moldflow simulation and FEM
- Tool design support
- Molding trials



Global production specifications

Standardized machinery and certified labs worldwide

Benefits:

- Global material specifications
- Localized production (SCM, CO₂)
- Regional customer support and tech-service



Color matching

Consistency over time/ product life cycle

Benefits:

- Perfect & steady color, batch-to-batch
- RAL and pantone colors worldwide
- Customer colors according to sample
- Laser-marking grades available



Tailgate Handle With VW-Logo

- Volkswagen
- **ALTECH NXT PP GF35 blk**
- Material Solution
 - Substitution PA6 GF30
 - Weight reduction of 18%, hence better CO2-footprint
 - VW 44045 §5.14 resistance to aging 1000h @150°C
 - Good UV-resistance
 - Fulfills requirements of PV 3930/3929 (Florida/ Kalahari)
 - Cost saving for final part

❖ Altech NXT PP®



Altech ECO – Near-To-Prime®

ALTECH – PA6/66, PP, ABS, PC, PC-Blends

- Prime polymer, filler, additive, color customized
- Ultimate performance/ quality/ portfolio

ALTECH ECO – PA6/66, PP, PC

- Post-Industrial Recycling (PIR) polymer, filler, additive, colors
- ECO = Near-to-Prime® performance/ quality, matching demanding specifications

ALTECH IQ – PA6/66, PP, ABS, PC-Blends

- PIR/PCR-polymer/ regrind, filler, additive, black
- IQ = Industrial Quality, less demanding, cost-critical

WIPELAST – PP/EPDM

WIPAFLEX – PP/PE/EPDM

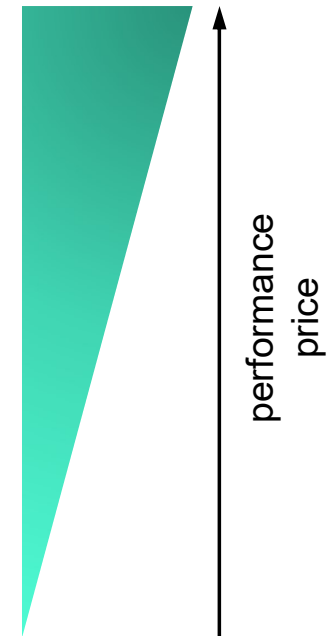
♻️ Altech® ECO

♻️ Altech®

♻️ Altech® ECO
Near-to-Prime®

♻️ Altech® IQ

WIPELAST
WIPAFLEX

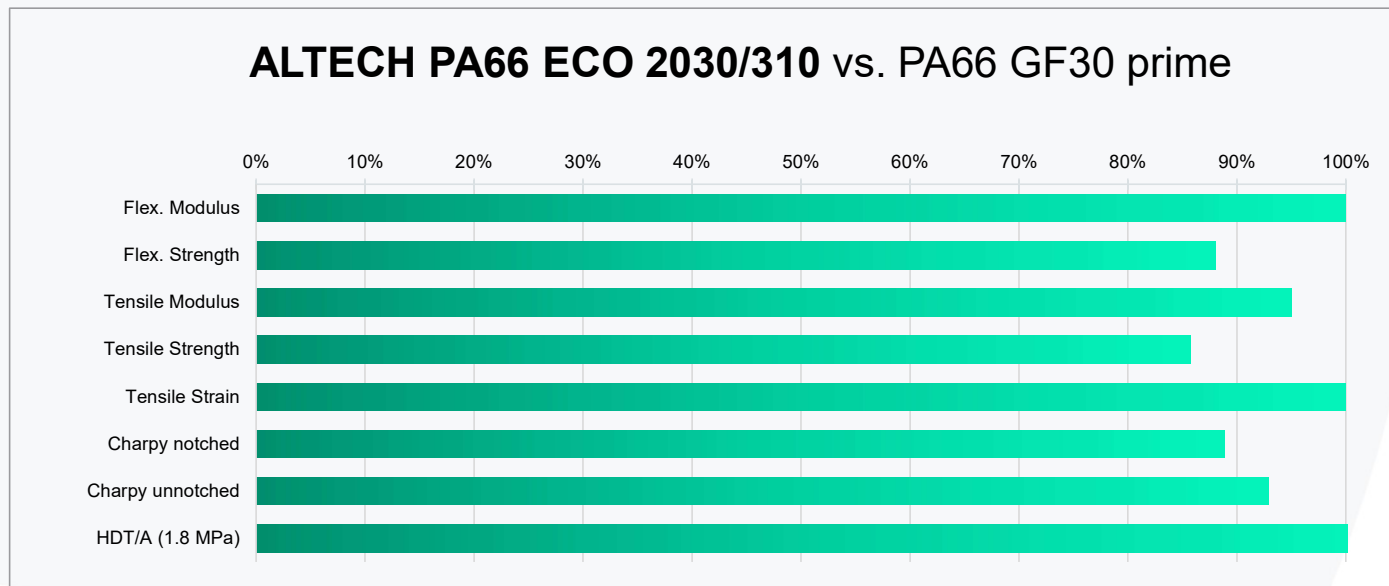


Altech ECO – Near-To-Prime[®]



ALTECH ECO

Utilising recyclate to provide excellent cost/ performance ratio to reach demanding Auto and E&E specifications



Technical Data Sheet
ALTECH[®] ECO
ALTECH PA66 ECO 2030/310 GF30 IM
(See table 04 27 212)

MOCOM

Base Polymer: Polyamide 66
Fiber/Active System: 30 % glass fibre
Special Features: high heat resistance, impact modified
Market Segment: Automotive, Machinery
Typical Applications: different automotive powertrain parts, housings, technical machinery components

Drying Conditions: in a dry air (desiccant) dryer -60 °C for 2-12 h, dependent on moisture content, max. moisture content <0.12 %

Processing Conditions: injection moulding melt temperature 260-300 °C, injection moulding mould temperature 80-120 °C

Storage: dry, protected from light

Properties	Value	Dimension	Test Norm
Mechanical Properties			
Flexural modulus	8500	MPa	ISO 178
Flexural strength	245	MPa	ISO 178
Tensile modulus	8000	MPa	ISO 527
Tensile strength at break	160	MPa	ISO 527
Tensile elongation at break	3.7	%	ISO 527
Charpy impact strength (1eJ)	75	kJ/m ²	ISO 179 (1eJ)
Charpy notched impact (1eJ)	11	kJ/m ²	ISO 179 (1eJ)
Thermal Properties			
HDT (A) (1.8 MPa)	260	°C	ISO 75-1/2
Rheological Properties			
Shrinkage - longitudinal (20h)	0.3 - 0.5	%	ISO 2944
Shrinkage - lateral (20h)	0.9 - 1.1	%	ISO 2944
Physical Properties			
Density	1.260	kg/m ³	ISO 1183

In general the presence of residual amounts of fibres and non-fibres in melt cannot be completely ruled out in recycled test results. In order to minimise potential negative effects of such inclusions, ALBIS employs extensive melt and non-melt filtration and separation systems in the production of its ALTECH ECO compounds. However, when the higher product safety requires increased control, please see test methods of tensile and non-tensile tests on the test product. To further reduce risk, machines are thoroughly cleaned by using hot air, detergent and separator technology. Furthermore, special measures are advised to be employed on the same tools, for dry, solutions or additive containing development of parts with ALTECH ECO plastic grade contact the "SLC" department.

These are guide values and not a specification. The data values are based on experimental results only and not binding without of maximum figures. These test values have been determined on standardized test specimens and can be influenced by optimization, mould design and processing conditions.

Any information given on the chemical and physical characteristics of our products, including, without limitation, technical advice on ALBIS Plastic Hamburg Phone: +49 (0) 40 78105-0 www.albis.com TDS22-04 Print Date: 2024-07-28 11:52:32 Page 1 of 2



Sustainability & Corporate Social Responsibility

- Corporate Social Responsibility (CSR)
 - Environment
 - Labor Practices
 - Fair Business Practices
 - Sustainable Procurement

- #60 questions
 - Re-certification, April 2021
 - Valid, April 2022

ecovadis

MOCOM COMPOUNDS GMBH & CO KG (GROUP)

has been awarded a

Gold medal

as a recognition of their EcoVadis Rating

- APRIL 2021 -



ECOVADIS - WHAT WE DO

Reliable CSR Ratings and Scorecards Covering 21 CSR Indicators, 190 commodities and 150 countries,
Built on 3 Pillars: People, Process and Platform

Summary

- Compounding excellence, innovation & know-how is at our core.
- We offer market leading specialty and custom compounds and Near-To-Prime® recycling solutions.
- Global production network with a strong technical customer facing team, industry focused.
- Corporate Social Responsibility (CSR)
- Part of the OTTO KRAHN Group.

“MOCOM will build on our strong history of customer collaboration, utilizing over 50 years experience, to deliver a focussed and exciting future.”

Your challenge is our ambition.

MOCOM Compounds GmbH & Co. KG
Mühlenhagen 35
20539 Hamburg

T +49 40 78105 710
technical@mocom.eu

T +49 40 78105 720
sales@mocom.eu

www.mocom.eu

Follow us on 

#MOCOM Compounds



MOCOM

We drive
compounding
excellence

Mit MOCOM beginnt eine neue Ära. Eine neue Marke mit starker Herkunft. Als ehemaliger Compoundeur der ALBIS PLASTIC erschaffen wir eine Vielfalt thermoplastischer Polymere für kundenspezifische Materialanforderungen.
www.mocom.eu

DISCLAIMER

Note:

Any information given on the chemical and physical characteristics of our products, including technical advice on applications whether verbally, in writing or by testing the product, is given to the best of our knowledge. However, this information is given without obligation and does not exempt the buyer from carrying out own investigations and tests in order to ascertain the product's specific suitability for the purpose intended. The buyer is solely responsible for the application, utilization and processing of the products, and must observe the laws and government regulations and the consequential rights of any third party. At all times our Conditions of Sale apply. Our product lists include dangerous goods. The correct marking of such goods is described in the respective data sheets.